

On the criteria for assessing the strength of concrete at a standard compression test

Abstract

The analysis of the tensely-deformed state of cube standard is produced at tests on a compression. During testing on standard methodology of value of descriptions of durability turn out overpriced. One of basic factors influencing on strength descriptions of concrete it is been neglect forces of friction on pin surfaces and abrasive effect. On the basis of theoretical and experimental researches it is set that by a basic criterion at the estimation of durability of concrete at a compression it is necessary to accept positive linear deformation.

Keywords: linear deformation, moving, mechanical descriptions, durability, cube standard, abrasive effect

Volume 2 Issue 5 - 2017

Abramov LM,¹ Abramov IL,² Galkina MA,³ Maklakova SN⁴

¹Department of Precision Mechanics, Karavaevo Str. Campus, Russia

²Department of technical sciences, Karavaevo Str. Campus, Russia

³Department of Resistance of Materials and Graphs, Karavaevo Str. Campus, Russia

⁴Department of Building Structures, Karavaevo Str. Campus, Russia

Correspondence: Maklakova Svetlana Nikolaevna, Department of Building Structures, Associate Professor (KGSHA), 156530, Kostroma Region, Kostroma District, PIC. Karavaevo Str. Training town, 34, Russia, Email aviapetra@mail.ru

Received: January 30, 2017 | Published: August 11, 2017

Introduction

Determination of the strength characteristics of concrete in compression in accordance with GOST 10180-2012¹ is currently the main method of preparing these experimental features. However, the method is not free from a number of significant deficiencies, which were previously reported.² In particular, the main disadvantages of this method include: the negative impact of the friction forces generated on the contact surfaces “sample - cooker testing machine “abrasive effect, which occurs on the contact surface due to the high hardness of the grain aggregate (sand, etc.).

The first disadvantage of radically distorts the test results in

terms of determining the strength of the uniaxial compression, since, as the analysis of the stress-strain state (SSS) of the sample material, is actually testing are predominantly in triaxial uneven compression mode. This proves how kind of the sample destroyed and the theoretical VAT analysis of the test sample Figure 1. Arbitrary direction of principal normal stresses, as well as their value, have no significant impact on the nature of the destruction, because it is known that the comparability of their values is a determining condition for a significant increase in strength, regardless of the direction of the maximum normal stress (σ_1) Vsluchaezhe triaxial uniform compression of almost any material destroyed cannot be and the more comparable in magnitude of the voltage acting on the main planes, the value of the breaking force will be correspondingly higher.

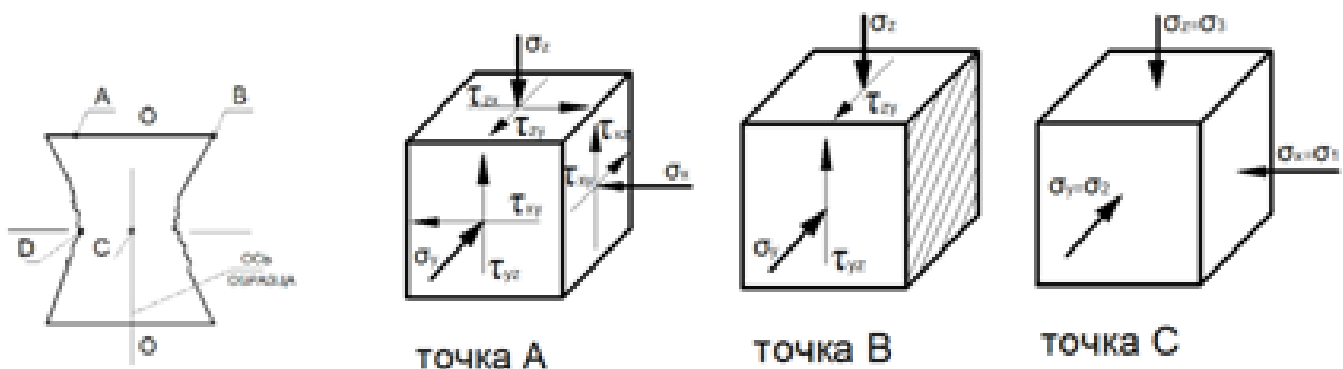


Figure 1 Stress-strain condition in characteristic points contact surface of the sample.

At point C the position of the principal planes coincides with the coordinate planes, since the point C is located on the sample plane of symmetry dividing the lower part of it from the top. Accordingly, shearing stresses in that plane, and this is no circumstance for determining the main directions denote normal stresses. Thus, for the central fiber (o-o) of the sample value (σ_3) is the greatest in comparison with the lateral fibers. Note also that the values of shear stresses asking the value zero on the symmetry plane, reach their maximum values at the contact surfaces. All this outlines the effect of friction forces generated on the contact surfaces.

The influence of the abrasive effect was assessed quantitatively by us during testing of concrete samples of four series of two classes of compression strength,³ having the following grain size of aggregate: 0.375; 0.63; 1.25 and 2.5mm. Rezultaty tests are shown in Figure 1A. In addition to the above, it should be noted that the standard⁴ recommended taking into account only the results of tests in which a form of destruction corresponds to that shown in Figure 2. But just this form of failure indicates the presence of the largest values of shear stresses at the contact surface, as compared with the other, given in the standard. Furthermore, for this kind of fracture is taken as a reference, we can conclude the following:

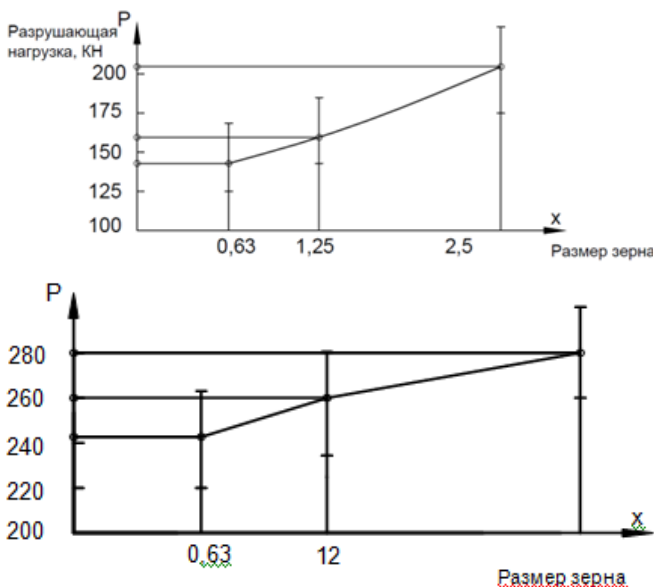


Figure 2 Influence of the grain size of aggregate on the breaking force of samples of concrete B15 and B30.

- i. The fracture surface is not those on which there are maximum tangential or maximum normal stresses.
- ii. Dangerous zones of fracture surfaces are located on the greatest possible distance from the contact surfaces.
- iii. Considering the geometric pattern of deformation of the sample Figure 3, it should analyze the behavior of the individual fibers, determine the linear deformation of the material in the various sections and areas of the sample.

In Figure 3 a detailed analysis of the deformation process the fibers located in the most dangerous areas. It was also found that the destruction of b-fiber bsvidetelstvuet that the fiber rastyagivayuschienapryazheniya absent, and also the shear stresses, because the fiber is located in the horizontal symmetry plane of the sample. The only possible reason for the destruction of the sample in the fiber b-byavlyaetsya linear deformation destruction, which the

function has an extremum at the plane of symmetry, in accordance with the general picture of the geometric deformation of the sample.

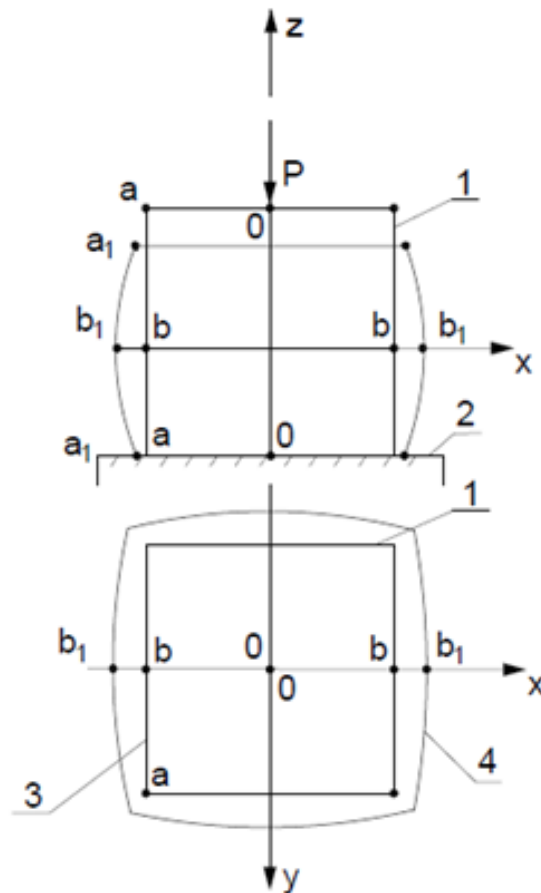


Figure 3 Deformations of longitudinal and transverse fibers of a cubic sample during a compression test.

Thus, the analysis of the stress-strain state of the sample material has shown that as a failure criterion of concrete in compression should take maximum linear deformation that occurs in the horizontal plane of symmetry of the sample. It should be borne in mind that the relationship between the axial load and the linear deformation of the subject direction is not linear, which greatly complicates the quantification of the alleged strain criterion. Besides the concrete material is not isotropic and, in addition, the ideal warping scheme does not consider a number of factors such as the local stone chip sample cube corner elements. The latter phenomenon see Figure 4A-4C due to lack of support in the shear stresses on the sample contact surface angles, as under the law of pairing the side faces free from any stress.

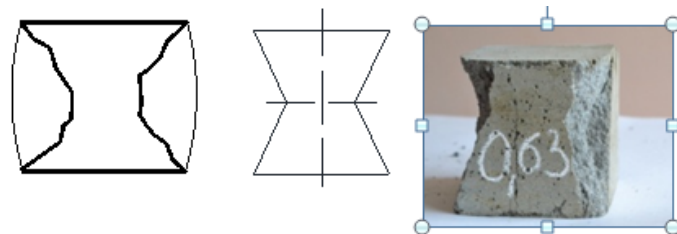


Figure 4 Surfaces of destruction of cubic samples under compression in normative Conditions A is a numerical calculation; B- standard form; B- actual type of destruction.

In this regard it is of interest distribution of the normal stresses σ_{z0} compressible sample contact surface. In solving the problem the mathematical model of the state of the material was used analytical method in the movements, as in the present case to set the boundary conditions in displacements for simply testing machine plate.

The basic equation is written in terms of displacements in the form:⁴

$$\begin{aligned} (\lambda_b + G_b) \frac{\partial \Delta}{\partial x} + G_b * \nabla^2 u &= 0 \\ (\lambda_b + G_b) \frac{\partial \Delta}{\partial y} + G_b * \nabla^2 v &= 0 \\ (\lambda_b + G_b) \frac{\partial \Delta}{\partial z} + G_b * \nabla^2 w &= 0 \end{aligned}$$

Where $\Delta = \partial u / \partial x + \partial v / \partial y + \partial w / \partial z$ - volume deformation of the material

u, v, w - deformed material displacement corresponding points on the coordinate axes «x, y and z»;

λ_b (ϵ_x), G_b (ϵ_z) - the elastic characteristics of concrete taken on normative data for the study of concrete classes without taking into account the anisotropy of the material properties.

$\lambda_b = (\mu_b E_b) / (1 + \mu_b)$ ($1 - 2\mu_b$), $G_b = E_b / (2(1 + \mu_b))$ - Lamé constants calculated at Poisson's μ_b coefficient values 0,2; $E_b = 3.25 * 104 \text{ MPa}$ as normative data.

The picture of the stress field in the direction of the z-axis shown in Figure 5.

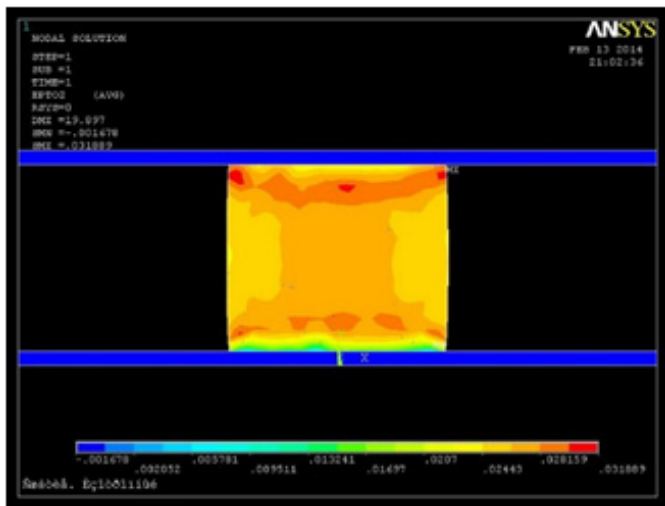


Figure 5 The pattern of the stress field at Solving the problem in displacements with the value $\epsilon_{b0} = 0.002$.

Analysis of the results shows that when the assumptions local increase of axial stresses in the corners of the test sample may be greater than the average voltage at the center of the sample is more than 2 times. And this is due to the local destruction of the sample at the corners of the contact surface. Experimental verification of axial stress distribution law on the contact surface was performed by kreshernoy waxed plate placed on the contact surface. More experiment is described.^{5,6} Schedule pressure distribution (axial stress) is shown in Figure 6.

Thus ultimately acceptance criterion deformation due to very uneven distribution of the contact pressure and, consequently, axial strain can be considered fully justified, in particular, to assess the limit values of the deformation elements. The latter leads to the formation of spatial fracture,⁷ which is related to the heterogeneity of both the stress and strain state in hazardous areas of concrete objects. Thus, in the conditions stipulated by the standard,¹ the destruction of the sample is not directly related to the influence of any stress (fracture surface is not such, on which there are normal or shear stresses), why introduce as a criterion for the destruction of the power criterion is unlikely to be an objective measure.

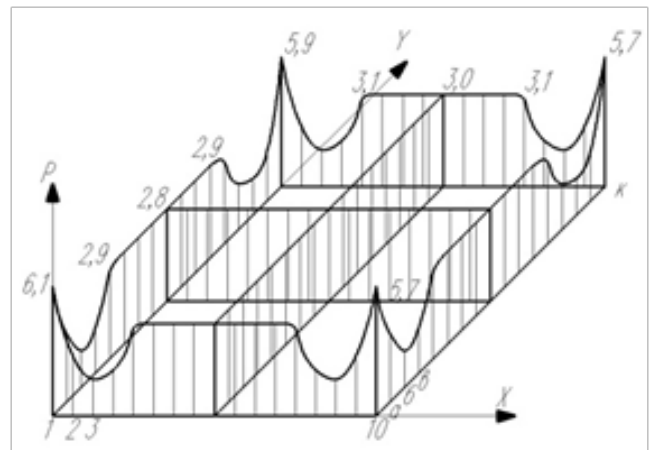


Figure 6 The diagram of the distribution of contact pressure on the end of loading the sample.

Therefore, the most appropriate and well-founded measure is used as a quantitative measure of evaluating the bearing capacity exhaustion material appropriate strain criterion. Given the above geometric model of deformation of a cubic sample, the most acceptable from the point of view of application in engineering calculations should recognize the positive value of maximum linear deformation (ϵ_{max}). This value can be determined theoretically using various models described in,⁴ and suitable even for option transversely anisotropic material. Much harder to address the issue of the experimental determination of the indicated value, because the value depends on the type parameter ϵ_{max} as stress. To solve this problem it was designed and manufactured with a device that allows you to realize the stress state type triaxial and biaxial compression Figure 7.

Tests at neodnoosnyh stressed states can determine a complete diagram of the limit state of concrete. It is supposed to build this diagram in the coordinates $P_{\sigma} - \epsilon_{max}$, where under P_{σ} be understood measure the stress state defined by the formula:⁸

$$P_{\sigma} = (\sigma_x + \sigma_y + \sigma_z) / \sigma_i \quad (2)$$

σ_i - where the intensity of the normal stresses, defined by the formula:

$$\sigma_i = \frac{1}{\sqrt{2}} \sqrt{(\sigma_1 - \sigma_2)^2 + (\sigma_2 - \sigma_3)^2 + (\sigma_3 - \sigma_1)^2} \quad (2), (3)$$

As follows from the formula (2), for a value of uniaxial tension $\bar{I}_{\sigma} = 1$, for a uniaxial compression $\bar{I}_{\sigma} = -1$. The compressed sample points located on its axis, the indicator value may reach values $\bar{I}_{\sigma} = -3$.



Figure 7 Appearance of the device for testing under uniaxial stress states of homogeneous character.

Since we are interested in the value of the indicator for cases of biaxial compression, the figure for different values of the axial deformation of the negative in a range $-1 \leq \bar{\sigma} \leq +1$. Poetomu a first approximation chart $\bar{\sigma}-\bar{\epsilon}_{\max}$ can be taken as a linearized Figure 8. Engineering calculation of reinforced concrete structures using diagrams plasticity limit should be performed according to the algorithm of the form: analysis of the VAT element of the projected material by using known software packages perform experiments on a modernized regulatory procedure under uniaxial tension and compression samples of materials that will be used in the manufacture of building elements calculated construction of the linearized diagram limit of plasticity limiting the comparison of positive strain in hazardous locations with the theoretical obtained by calculation assessment of the feasibility of using this material in the design values of the design loads So, on the results of experimental and theoretical studies, the following conclusions value of strength of concrete in compression, resulting from the standard test conditions, are significantly overstated due to neglect of contact friction forces and “abrasive” effect on the contact surfaces for a more objective assessment of the carrying capacity of the projected construction elements to be used deformation criterion - the maximum positive value of deformation to calculate a first approximation, in the absence of experimental data to be used in the practice of engineering materials is permissible to use a linearized diagram of plasticity limit for known values of longitudinal strain in uniaxial tension and uniaxial compression Evaluation limit of plasticity is obviously overpriced, but it's too high, according to preliminary estimates will not exceed 10% of the nominal value of the marginal positive linear deformation.

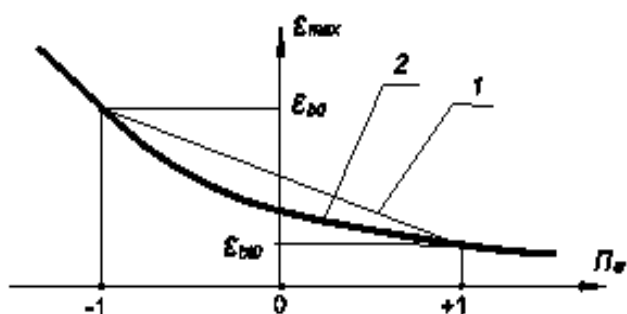


Figure 8 The diagram of ultimate plasticity Concrete 1- linearized diagram, 2- theoretical diagram.

Acknowledgements

None.

Conflict of interest

The author declares no conflict of interest.

References

1. GOST 10180. *Concretes methods for determining the strength of the control samples*. M Standartinform; 2012. 34 p.
2. Abramov LM. On the evaluation of the influence of frictional forces in determining the compressive strength of control samples. *Concrete and reinforced concrete*. 2014.
3. Abramov LM. On the influence of non-equal-elasticity on the deformability of a concrete element in bending. *Technologies of concrete*. 2016;216(1-2):42-44.
4. Nadai A. *Plasticity and destruction of solids*. 1954:648.
5. SP52-101-2003. *Concrete and reinforced concrete structures without prestressing of reinforcement*. Moscow: Standartinform; 2002. 54 p.
6. Abramov LM. *On the technique of testing the compression of concrete samples*. In: Abramov LM, et al. editors. *Sat Of the 13th International Scientific and Practical Conference Domestic Science in the Era of Change*. 2015;8:8-12.
7. Salnikov AS. Method for determining the minimum load and the coordinates of the formation of a spatial crack in reinforced concrete structures in torsion with a bend. *Industrial and civil construction*. 2016;1:52-57.
8. Smirnov-Alyayev GA. *Resistance of materials to plastic deformation*. Mashinostroenie; 1978. 368s p.