

A transient spinal cord ischemia reveals a silent type A aortic dissection

Introduction

Aortic dissection is a life-threatening vascular emergency that requires a prompt diagnosis and management. Isolated spinal transient ischemic accident is an extremely rare manifestation of aortic dissection (AD) type A. Thus, AD should be on the top of the aetiology list, despite the isolated character of the neurological presentation.

Case description

A 53-year-old man, previously healthy, presented to the emergency department for a right sided renal colic documented by a uroscan showing a right ureterovesical junction stone (Figure 1). Initial blood tests were normal. While symptomatic treatment was being administered, he presented an acute paraplegia with anaesthesia of both lower limbs in all modalities below T4. Deep tendon reflexes were absent and plantar reflex was indifferent bilaterally. His blood pressure was 200/140 mmHg. His symptoms self-resolved after 20 minutes. He denied any significant thoracic or back pain, and had no signs of limb ischemia. Cardiac auscultation was normal and pulses were palpable and symmetric in all extremities.



Figure 1 Helical CT of the abdomen and pelvis without intravenous or oral contrast administration, showing a 1.8 mm right ureterovesical junction calculus (arrow).

Electrocardiogram, transthoracic echocardiography and enhanced total spine MRI (Figure 2) were all normal. CT angiography of the aorta (Figure 3) identified a Stanford type A AD extending from the supravalvular segment until the right iliac artery. All branches of the aorta arose from the true lumen. The patient's blood pressure was controlled with intravenous labetalol and he received urgent surgical repair of the dissection with a 36mm Hemashield graft and an aortic valve replacement with a 25 St. Jude Trifecta valve. His evolution was uneventful and was discharged home soon after.

The transient ischemic attack of the spinal cord is a very rare neurologic condition with an unknown prevalence. It constitutes

Volume 11 Issue 1 - 2021

Rachelle Abi Nahed,¹ Wissam Rizk²

¹Faculty of Medicine, Department of Neurology, Université Saint-Joseph, Hotel-Dieu de France Hospital, Lebanon

²Department of Neurology, Kesserwan Medical Center, Jounieh, Lebanon

Correspondence: Rachelle Abi Nahed, Faculty of Medicine, Department of Neurology, Université Saint-Joseph, Hotel-Dieu de France Hospital, Lebanon, Email recho250@hotmail.com

Received: June 30, 2020 | **Published:** February 18, 2021

1% - 2% of all neurologic vascular pathologies.¹ AD is also a rare occurrence. It has an incidence of 5 to 30 cases per million people per year, with the most typical symptoms being chest or back pain.² The symptoms and signs depend upon the extent of the dissection and the affected cardiovascular structures.



Figure 2 Total spine 3 Tesla MRI, with a T2-weighted sagittal plane shown here, with normal thickness and signal intensity of the spinal cord and conus medullaris.

However, neurological symptoms can occur because of occlusion of carotid, vertebral, spinal arteries, vasa nervorum of peripheral nerves, or because of hypotension and related cerebral perfusion deficit.³ They may be dramatic, and are sometimes the only symptoms, masking the underlying disease.⁴ It is especially in these pain-free dissections (which occurs in 5–15%)⁵ with predominant neurological symptoms that the diagnosis of AD is difficult and delayed, and therefore increasing the mortality rate. Neurological presentation in painless type A AD include ischemic stroke (15,7%), ischemic

neuropathy (10.8%), syncope (5.9%), hypoxic encephalopathy (2%) and spinal cord ischemia (1%).³ The latter has been reported in few cases as the presentation of mostly type B AD. It can manifest as a complete transverse spinal cord infarction as well as anterior spinal cord syndrome, Brown-Sequard syndrome, progressive myelopathy or more rarely transient spinal cord ischemia.⁶⁻⁸

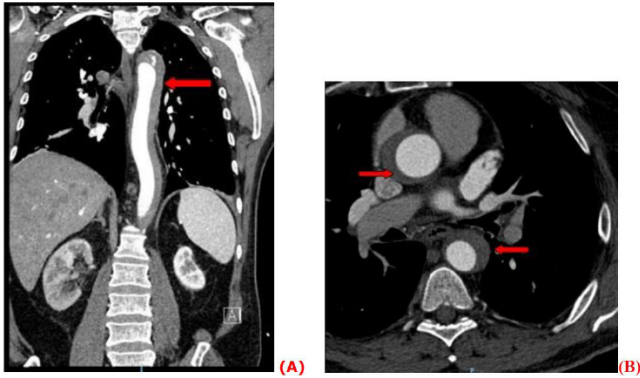


Figure 3 CT angiography of the thoracic and abdominal aorta with a coronal (A) and axial (B) plain, showing a Stanford type A aortic dissection extending from the supravalvular segment and of the thoracic aorta and reaching the aortic bifurcation (arrow), with almost complete thrombosis of the false lumen at the thoracic level and with patent false and true lumens at the abdominal juxtarenal and infrarenal level.

Conclusion

We report the first case of a spinal transient ischemic accident as the only manifestation of a type A aortic dissection. Therefore, it is important to maintain a high-index of clinical suspicion for aortic dissection even if neurological symptoms are fluctuating or have fully remitted, in order to hasten the diagnosis and the adequate treatment.

Acknowledgments

None.

Conflicts of interest

The authors declare no conflicts of interest.

References

1. Vargas MI, Gariani J, Sztajzel R, et al. Spinal cord ischemia: practical imaging tips, pearls, and pitfalls. *AJNR Am J Neuroradiol.* 2015;36(5):825–830.
2. Khan IA, Nair CK. Clinical, diagnostic, and management perspectives of aortic dissection. *Chest.* 2002;122(1):311–328.
3. Gaul Charly, Dietrich Wenke, Friedrich Ivar, et al. Neurological Symptoms in Type A Aortic Dissections. *Stroke.* 2007;38(2):292–297.
4. Lee SJ, Kim J-H, Na CY, et al. Eleven years of experience with the neurologic complications in Korean patients with acute aortic dissection: a retrospective study. *BMC Neurol.* 2013;13:46.
5. Gaul C, Dietrich W, Erbguth FJ. Neurological symptoms in aortic dissection: a challenge for neurologists. *Cerebrovasc Dis Basel Switz.* 2008;26(1):1–8.
6. Beggs AD, Al-Rawi H, Parfitt A. Chest pain and fleeting neurological signs. *Lancet Lond Engl.* 2005;365(9469):1514.
7. Colak N, Nazli Y, Alpay MF, et al. Painless Aortic Dissection Presenting as Paraplegia. *Tex Heart Inst J.* 2012;39(2):273–276.
8. Gerber O, Heyer EJ, Vieux U. Painless dissections of the aorta presenting as acute neurologic syndromes. *Stroke.* 1986;17(4):644–647.