

# Infectious and non-infectious sensitisation of patients with bronchial asthma and chronic obstructive pulmonary disease

## Abstract

The study involved 169 people, of which 33 were practically healthy, 69 had bronchial asthma, 24 had bronchial asthma combined with chronic obstructive pulmonary disease, 35 had COPD and 8 had community-acquired pneumonia. We assessed the presence of IgE to tick allergens, dust allergens, and the combined allergens of grass, trees, weeds and flower pollen. We determined the presence of IgE and IgG to the allergens *Strept. pneumon.*, *Haemofil. influenzae*, *Neisseria perflava* and *Staph. aureus*. We assessed the presence, multiplicity, severity and combination of sensitisation to the presence of specialised IgE towards infectious and atopic allergens. All study groups displayed sensitisation, including healthy people and patients with COPD and community-acquired pneumonia, who did not show clinical allergy symptoms. A statistically significant direct correlation was established between IgG and IgE to *Strept. Pneumoniae* and *Haemofilus influenza* in healthy subjects and those with pulmonary conditions. The IgE or IgG reaction to *Neisseria perflava* and *Staph. aureus* did not show a significant correlation in either healthy or affected subjects.

**Keywords:** sensitization, allergy, mild bronchial asthma, immunoglobulin, allergen, antigen

Volume 3 Issue 1 - 2016

Fedoseev GB, Trofimov VI, Timchik VG, Negruța KV, Golubeva VI, Gorovneva EV, Razumovskaya TS, Birulya IV, Aleksandrin VA, Kryakunov KN

Pavlov First State Medical University of St Petersburg, Russia

**Correspondence:** Fedoseev GB, Pavlov First State Medical University of St Petersburg, Russia, Email fedoseevsp@mail.ru

**Received:** February 16, 2016 | **Published:** March 16, 2016

**Abbreviations:** Mod. BA, moderate bronchial asthma; Mod. BA+COPD, moderate bronchial asthma combined with chronic obstructive pulmonary disease; COPD, chronic obstructive pulmonary disease; CAP, community-acquired pneumonia

## Introduction

Sensitisation means increased sensitivity, and presents as the main issue in our understanding of what is an allergy and allergic diseases, their aetiology, pathogenesis, diagnosis, clinical presentation, prevention and treatment. The study of sensitisation includes three main sub-groups: to what sensitisation occurs, the mechanisms creating sensitisation, and its consequences. Success in the study of this complex field of internal medicine can only be achieved via a systemic approach, where studies are carried out on the molecular, cellular, tissue, organ and whole body levels.<sup>1</sup> The size of this journal article does not allow us to cover all aspects of this issue, so we will focus on only facts that are most closely to clinical medicine, and relate to the organ or systemic levels, especially because the end result of sensitisation is either good health or disease.

## The susceptibility of patients with allergies to infection

Patients with bronchial asthma are more likely to develop diseases that are related to lower airway bacterial infections and viral respiratory infections.<sup>2</sup> During the H1N1 influenza epidemic in 2009, patients with BA developed pneumonia twice as often as people without allergies, 50% and 27% respectively, and the pneumonia was significantly more severe, requiring ICU admission in 33% and 19% of patients, respectively.<sup>2</sup> Infection with influenza in children with allergies during the 2009 epidemic was diagnosed much more

frequently than in children without diagnosed allergies.<sup>3</sup> The risk of developing severe bronchial asthma is particularly high when the child is exposed to airborne allergens and a viral infection.<sup>4</sup>

Patients with atopic BA are also highly susceptible to viral infections, especially by the rhinovirus.<sup>5</sup> Patients with BA have an increased susceptibility to bacterial infections, particularly pneumococcal.<sup>6</sup> The risk of invasive pneumococcal infection is higher in patients with severe BA, and reaches 4.2 episodes per 10,000 people per year, while it is 2.3 episodes in patients with moderate BA, and 1.2 episodes in patients with mild BA.<sup>7</sup> BA is considered a risk factor for influenza and community-acquired pneumonia.<sup>8</sup>

Patients with BA are at an increased risk of getting mycoplasmal pneumonia<sup>9</sup> and whooping cough.<sup>10</sup> BA turned out to be the most common chronic condition among children affected by shingles.<sup>11</sup> BA is one of the factors that promote the development of AIDS.<sup>12</sup> One of the reasons that the presence of BA increases susceptibility to viral and bacterial infection is considered to be the innate or acquired interferon insufficiency,<sup>7,13</sup> as well as immune incompetence of various nature and severity.<sup>14</sup> Moreover, the increased susceptibility of BA patients to infections is related to defects in their epithelial barrier function. The susceptibility of patients with allergic conditions to infections, which is related to the incompetence of their immunological defence, justifies the need for considering the appearance of systemic disorders in this group of patients.<sup>15</sup> One of the treatment methods to be discussed is the use of vaccines in this group of patients.

## Some points relating to atopic (non-infectious) allergies

There is published data available on dozens of different airborne,

food, industry, drug-related and other allergens, and every year new names are added to this list. The 15 most clinically common allergens are considered to be the main ones with diagnostic complexes being created for sensitisation diagnosis, which use specialised IgE. Using skin samples with airborne allergens, the rates of sensitisation in patients with BA varies between 51% and 81.9%.<sup>16</sup> The main fundamental mechanism of sensitisation is the formation of specialised IgE.<sup>17</sup> There is a correlation between levels of specialised IgE, total IgE, the results of skin allergy testing, and BA severity.<sup>18</sup> Patients with mild and moderate BA have a significant correlation between levels of specialised IgE to non-infectious allergens and the results of skin tests, the acetylcholine inhalation test, and the exhaled nitric oxide content.<sup>19</sup>

It is important to note that sensitisation and the related appearance of antigen-specific IgE antibodies is not necessarily accompanied by clinical allergy symptoms.<sup>20</sup> Therefore, sensitisation that manifests as an increased content of specialised class IgE antibodies can occur in people without allergy symptoms, including practically healthy people, as well as in people with allergies. An allergy is the combination of sensitisation (increased number of antigen-specific IgE antibodies) and clinical signs of an allergic condition.<sup>21</sup>

The sensitivity to airborne allergens does not decrease with time.<sup>19</sup> The biochemical properties of allergens and the sensitivity of respiratory epithelium to their active components can increase the permeability of the respiratory mucous membrane to respiratory allergens. Many allergens contain serine, cysteine and other proteases, which disrupt the barrier function of the respiratory epithelium and increase the allergenic effect of respiratory allergens.<sup>22</sup>

### Th1, Th2 and allergic diseases

The most widely accepted current hypothesis of the pathogenesis of BA and other allergic diseases is the idea that they are related to the predominance of the Th2 cytokine system. Newborns had a predominance of Th2 activity of the immune system,<sup>23</sup> then the influence of the gut micro biota stimulates the development of Th1 cells, which forms immune tolerance and protects from the possible development of atopic diseases and BA.<sup>24</sup> The effect of external factors, such as dust, dust mites, pollen, and microbial endotoxin, leads to the differentiation of pro-inflammatory Th2 cells. This is accompanied by the expression of pro-inflammatory cytokines IL-4, IL-5, IL-9 and IL-13<sup>25</sup> and IgE synthesis, an increase in the activity of eosinophils and mast cells, with sensitisation and the appearance of clinical signs of allergy.<sup>26</sup> Th1 cells participate in the formation of delayed hypersensitivity reactions and inhibit Th2-controlled processes.<sup>26</sup> Respiratory viral infections stimulate Th1 activity and increase interferon activity.<sup>27</sup> Nasal cavity colonisation with *Staphylococcus aureus* is accompanied by local Th2 inflammation. With a predominance of Treg cells activity, Th2 cell proliferation ceases, there is formation of airborne allergen tolerance and the synthesis of specialised IgE is slowed down.<sup>28</sup>

Th2 system activity leads to fibro proliferative changes in the lungs. Granulomatous inflammation is characteristic of Th1.<sup>29</sup>

Th2 system activity cannot fully explain the pathogenesis of atopy and BA.<sup>30</sup> Bronchial hyperactivity and increased mucus secretion can occur without IgE and eosinophilia in the bronchial contents. Treatment directed at selectively blocking Th2 activity has been ineffective.<sup>31</sup> There is data that points towards the role of allergen-specific IgG in Th2-mediated allergic diseases, such as BA, bronchial *aspergillosis* and allergic alveolitis.<sup>32</sup>

Apart from the Th1 and Th2 cellular immune balance, there is a Th17 cell system, which is mostly present in the intestinal mucosal lining.<sup>24</sup> This cell system is involved in the body's defence against microbes and affects the appearance and course of allergies and BA.<sup>33</sup> One of the reasons for neutrophilic inflammation is thought to be endotoxin-containing dust particles, whose inhalation is accompanied by increased activity of IL-1 and TNF $\alpha$ , and neutrophilic inflammation.<sup>34</sup> Prevention and treatment of allergic diseases and BA depends on the effect on the immunological regulation and the function of the immune system.<sup>35</sup> Clinical interpretation of IgE levels in blood serum.

Increased levels of specialised IgE in patients with atopic diseases, such as atopic BA, atopic dermatitis and allergic rhinitis, are a symptom of sensitization.<sup>36</sup> It is important to note the difference between sensitisation and allergy. Sensitisation is an increase in the levels of specialised class E antibodies, but at the same time, contact with a particular allergen does not trigger symptoms of allergic disease. In the presence of an allergy, contact with a sensitising allergen is accompanied by the appearance of corresponding symptoms.<sup>21</sup> The cellular and sub cellular processes of allergic reaction have been studied in detail, and the order of events following the binding of an allergen to two neighbouring specialised IgE's on the surface of mast cells and basophils is well known, involving the release of pro-inflammatory mediators, such as histamine, tryptase, leukotriene and prostaglandin, and the ensuing development of clinical symptoms.<sup>26</sup>

Bacterial IgE titres reflect the presence and degree of impact of the bacterial antigen.<sup>37</sup> The level of total blood serum IgE is related to the features of BA progression, but is not related to specific allergic sensitisation. A reduction in total blood plasma IgE levels correlates with an improvement in the clinical progression of BA.<sup>38</sup> An increased level of total blood plasma IgE corresponds to BA severity is linked to eosinophilia and a higher content of eosinophilic cationic protein in the blood. IgE content on the surface of respiratory organ mucous membranes is not related to the systemic levels of IgE, but is regulated by the local reactivity of the mucosa, which depends on the effect of antigens. The local function of IgE is a homeostatic protective mechanism of the respiratory mucous membrane, in both healthy subjects and those with BA.<sup>39</sup>

Increased levels of total IgE have been noted in cases of parasitic disease and Bronchopulmonary aspergillosis.<sup>40</sup>

BA and other allergic diseases can be divided into two types: the external, allergic version related to the sensitisation to allergens in the external environment and accompanied by increased blood plasma IgE levels, and the internal, non-allergic version, without sensitisation and a low level of blood plasma IgE.<sup>41</sup> 70%-90% of BA cases are related to IgE-dependent mechanisms.<sup>42</sup> An allergen-specific IgE against microbial components has been found in 50% of patients with BA. The obtained data allows us to hypothesise that in these patients, microbial sensitisation is a trigger for BA of this phenotype.<sup>41</sup> IgE antibodies to *Pneumococcus*<sup>43</sup> and to *Staphylococcus aureus* endotoxin<sup>44</sup> have been found in the blood serum of patients with BA.

In recent years, there has been an increased interest in opportunistic microorganisms. Allergies to *Neisseria* and *Staphylococcus aureus* were confirmed in patients with BA in our study: IgE isotype antibodies to *Staphylococcus aureus* were found in 69.2% of patients with BA, and to *Neisseria* in 85.7% of patients.<sup>45</sup> IgE to the respiratory syncytial virus were found in the blood plasma of children with bronchiolitis, with increased levels being accompanied by the appearance of wheezing.<sup>43</sup>

In mouse experiments, specific antiviral E antibodies were obtained.<sup>46</sup> However, we must emphasise that there is no basis for considering antiviral IgE as being significant during the development of allergic disease that is virus-related.<sup>47</sup>

IgE auto-antibodies against human tissue have been found in the blood serum of patients with allergic BA. It is hypothesised that IgE auto-antibodies against human tissue create more severe BA.<sup>41</sup>

### Clinical interpretation of IgG levels in blood plasma

IgG molecules have a unique ability to create both inflammatory and anti-inflammatory reactions.<sup>48</sup> IgG is involved in the neutralisation of toxins and viruses, and protects the body from various microorganisms.<sup>48</sup>

Concentrations of IgG1, IgG2, IgG3 and total IgG are reduced in young children with BA, which is related to a delay in the maturation of the immune system and plays a role in the pathogenesis of BA. Children of any age with BA have a lower level of IgA and IgG, with the IgG3 subclass having the most deficits.<sup>49</sup> Adults with BA have been found to have specific IgG to the *Aspergillus fumigatus* antigen, which is seen as a manifestation of the aetiological significance of this microorganism.<sup>50</sup>

Due to the high level of IgG antibodies to *Chlamydia pneumoniae* in patients with non-atopic BA, a hypothesis was made about the causal significance of this microorganism and BA. However, a comparison of the specific IgE content and the release of histamine from basophils in these patients allowed researchers to discard this theory.<sup>50</sup>

The anti-inflammatory effect of IgG has been shown both experimentally and clinically. It has been established that specific IgG can block the binding of specialised IgE with antigens and thus reduce the hypersensitivity and inflammation in patients with BA.<sup>32</sup>

### Our own data

The aim of this study was to investigate the non-infectious (atopic) and infectious (bacterial) sensitisation in people with clinical symptoms of allergy, and people without symptoms, using specific IgE for atopic and specialised IgE and IgG for infectious allergens.

### The aims of this study

- i. Determine the presence of sensitisation to infectious and atopic allergens in healthy subjects, and patients with BA, COPD, and community-acquired pneumonia (CAP).
- ii. Study the multiplicity of sensitisation to infectious and non-infectious allergens.
- iii. Determine the degree of sensitisation.
- iv. Investigate the combination of sensitisation to infectious and non-infectious allergens.
- v. Determine the interaction between IgG and IgE to bacterial allergens in healthy subjects and in different clinical groups of patients.
- vi. Evaluate the degree of correlation between specific IgG and IgE for each bacteria and between different bacteria, in healthy and affected subjects.

### Study material and methods

The study included 169 people, of whom 33 were practically healthy (control group), 29 patients had mild bronchial asthma (1<sup>st</sup> group),

40 patients had moderate bronchial asthma (2<sup>nd</sup> group), 24 patients had moderate bronchial asthma as well as chronic obstructive pulmonary disease (3<sup>rd</sup> group), 35 patients had chronic obstructive pulmonary disease (4<sup>th</sup> group), and 8 patients had community-acquired pneumonia (5<sup>th</sup> group). The patient age and gender is presented in Table 1.

**Table 1** Patient characteristics according to age and gender

Study groups	n	Mean age M±s	Men %	Women %
Healthy subjects	33	49.39±21.02	33.3	66.7
Mild BA	29	31.76±10.46	24.1	75.9
Moderate BA	40	44.35±16.92	30	70
Mod. BA+COPD	24	60.13±10.59	66.7	33.3
COPD	35	64.77±8.37	20	80
CAP	8	46.13±12.93	50	50.5

The subjects underwent general clinical, laboratory and instrumental tests. Allergen-specific IgE and IgG antibodies in blood serum were determined using the immunoenzyme technique. A set of reagents was used for immunoenzymatic determination of allergen-specific IgE and IgG antibodies in blood plasma, using the solid-phase non-competitive indirect enzyme immunoassay. We assessed the presence of IgE to tick allergens, dust allergens, and the combined allergens of grass, trees, weeds and flower pollen. We determined the presence of IgE and IgG to the allergens *Strept. pneumoniae*, *Haemophilus influenzae*, *Neisseria perflava* and *Staph. aureus*.

The program STATISTICA 6.1 (Stat Soft, Inc.) was used for statistical data analysis. The critical level of significance was considered to be 0.05 when interpreting the results. Descriptive statistics for quantitative signs used the mean and root-mean-square deviation (M±s). The Student t-test and Pearson's correlation coefficient was also used.

### Results and discussion

1. The presence of sensitisation to atopic and infectious allergens according to the raised content of specific IgE is presented in Table 2.
2. An obviously increased level of specific immunoglobulins (with a reaction of +2 or more) was present in some of the study subjects in all groups, both in healthy patients, those with COPD and CAP without clinical allergy symptoms, and in patients with clinical symptoms of allergy (mild BA, moderate BA, moderate BA + COPD). This indicates that sensitisation to atopic and infectious allergens can occur both in the presence and in the absence of allergy symptoms. It can be hypothesised that sensitisation in healthy subjects and patients without allergies has protective functions, while in patients with allergies is one of the mechanisms of pathogenesis.

It is worth noting the high frequency of sensitisation to the *Staphylococcus aureus* allergen in healthy and affected subjects.

3. The multiplicity of sensitisation to atopic and infectious allergens characterises the sensitisation according to the number of allergens: to what number of allergens (providing a reaction of +1 or more) has a specific IgE to 1,2,3,4 and more allergens separate to the infectious and non-infectious allergens as a percentage of the number of group subjects, separate for each disease entity. This information is presented in Figure 1.

The data obtained from healthy subjects does not greatly vary from the results of the study patients. All the study subjects (apart from one patient with mild BA) had sensitisation to non-infectious allergens. All the study subjects predominantly had sensitisation to 4 or more non-infectious allergens. Sensitisation to 4 or more non-infectious allergens was noted to be 3 times more common than sensitisation to infectious allergens. With any number of significant allergens in healthy and affected subjects, there was a predominance of sensitisation to non-infectious allergens.

- The degree of sensitisation what number of subjects in a given group have specific IgE levels with the value of 0, 1+, 2+, 3+ or 4+, as a percentage of the total number of subjects in that group. This information is presented in Figure 2.

When there was a lack of sensitisation (“0”), studies with infectious allergens predominated by two or more times, and the lack of infectious sensitisation was noted much more frequently than non-infectious sensitisation in healthy and affected subjects in all groups. Significant sensitisation to 4+ infectious and non-infectious allergens was almost wholly lacking with any degree of sensitisation in healthy and affected subjects in all study groups, the sensitisation to non-infectious allergens predominated.

- Concomitance of sensitisation to infectious and non-infectious allergens: Concomitance is the combination of non-infectious and infectious sensitisation according to the number of positive reactions (1+ or more), as represented by IgE to 0,1,2,3 and more infectious and non-infectious allergens as a percentage of the total

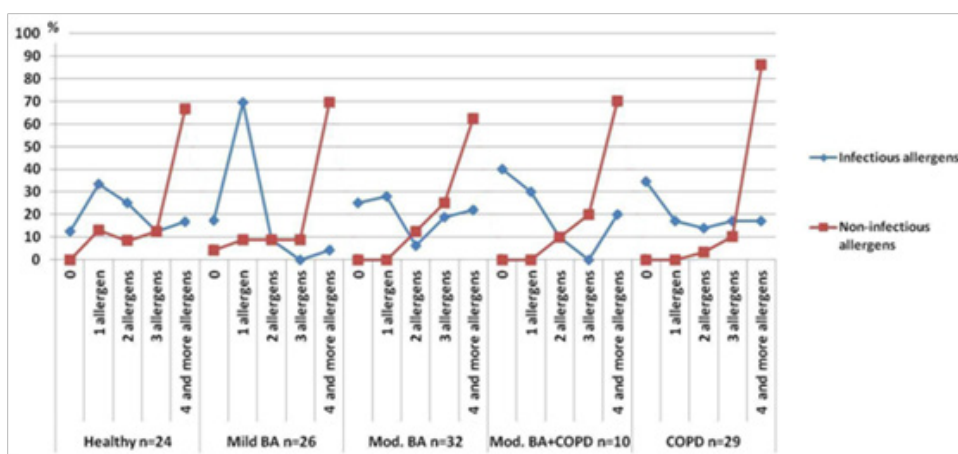
number of subjects in that group. For the study of concomitance, the patients were split into four groups. Group 1 included subjects who had few (0-2) non-infectious and infectious IgE, Group 2 included subjects who had many non-infectious (3-6) and few (0-2) infectious IgE, Group 3 included subjects with few (0-2) non-infectious and many infectious (3-4) IgE, and Group 4 included subjects with had many non-infectious (3-6) and many infectious (3-4) IgE. The results of the concomitance study of sensitisation are presented in Figure 3.

Among the study subjects, the most common were patients from Group 2 (many non-infectious and few infectious IgE), rare were patients from Group 4 (many non-infectious and infectious IgE), and even rarer were patients from Group 1 (few non-infectious and infectious IgE), while there were almost no patients in Group 3 (few non-infectious and many infectious IgE). All groups that were characterised by a combination of sensitisation had both healthy subjects and patients with different disease entities.

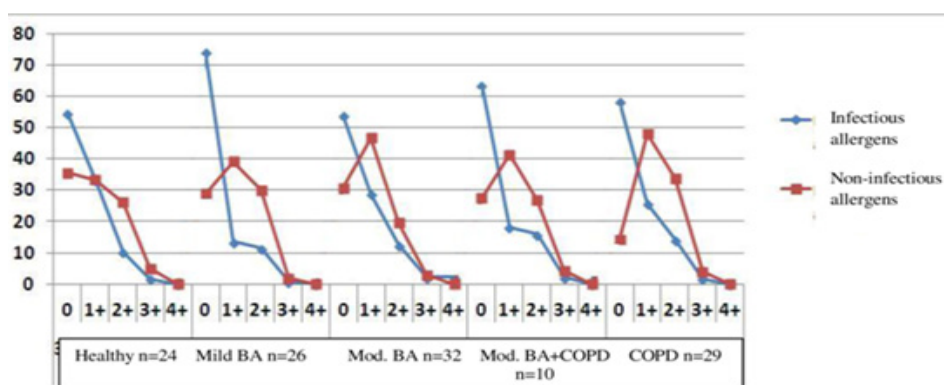
- The interaction between IgG and IgE to bacterial antigens is of particular interest, since the main function of IgG is antibacterial protection, while IgE is involved in sensitisation. A matrix was developed to analyse these interactions, which displayed the correlation between different levels of IgG and IgE (Figure 4). The use of the matrix allowed us to pinpoint nine versions of interaction between different levels of IgG and IgE. The correlation distribution between different levels of IgG and IgE to bacterial antigens in healthy and affected subjects is presented in Figure 5.

**Table 2** The percentage of study subjects with increased levels (class 2 or more) of IgE to non-infectious (atopic) and infectious allergens in blood serum, in healthy and affected people

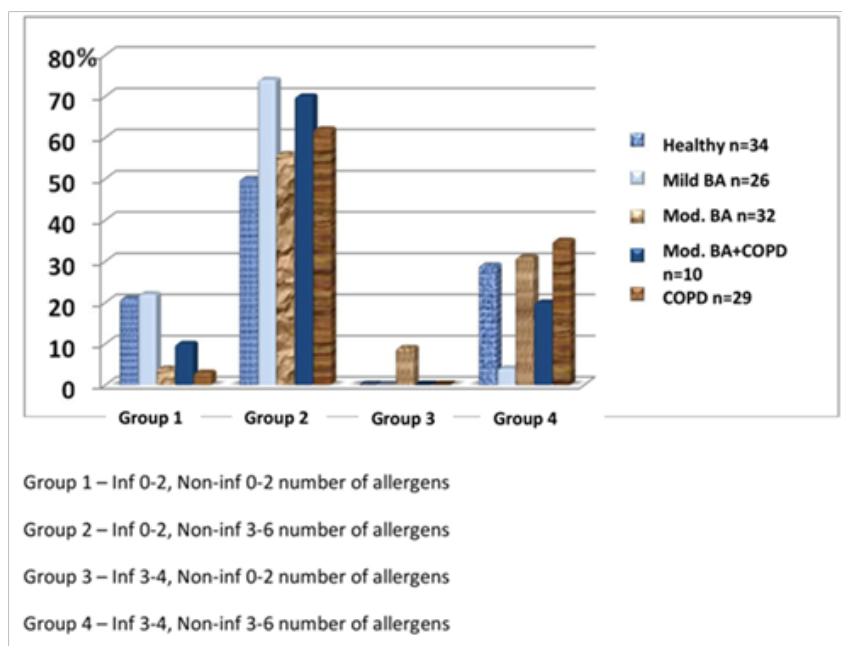
<b>Non-infectious allergens</b>						
<b>Allergens</b>	<b>Healthy subjects</b>	<b>M Mild BA</b>	<b>Moderate BA</b>	<b>Mod. BA+COPD</b>	<b>COPD</b>	<b>CAP</b>
	n=32	n=28	n=39	n=23	n=35	n=7
Ticks	34.3	32.1	20.5	39.1	33	14.2
Dust	34.3	42.2	33.3	26.1	38.8	42.2
Grass	21.8	7.8	15.4	30.4	27.7	14.2
Trees	40.6	32.1	20.5	39.1	38.8	14.2
Weeds	25.1	21.4	17.9	23.1	38.6	28.6
Flowers	40.6	42.8	23.1	30.4	50	14.2
<b>Infectious Allergens</b>						
Allergens	n=29	n=28	n=31	n=9	n=35	n=8
S. Pneumonia	51.7	28.6	54.8	33.3	58.3	61.5
Haemofilus Infl.	58.6	53.6	67.8	66.6	55.5	61.6
Neisseria Perfl.	55.2	46.4	67.7	22.2	61.1	30.8
Staph.Aureus	93.1	92.8	87.1	77.8	83.3	100



**Figure 1** The multiplicity of infectious and non-infectious sensitisation according to specific IgE levels (+1 or more) in % as compared to the number of study subjects.



**Figure 2** The degree of infectious and non-infectious sensitisation according to specific IgE levels in % as compared to the number of study subjects.



**Figure 3** The combination of infectious and non-infectious sensitisation according to the number of study subjects with varying combinations of specific IgE numbers (+1 or more) in % as compared to the study subjects in the particular group.

	IgE≤25	IgE=26-50	IgE>50
IgG≤0.5	1	4	7
IgG=0.6-2	2	5	8
IgG>2	3	6	9

Figure 4 The matrix for combination analysis of different levels of IgG and IgE to bacterial antigens in healthy and affected subjects.

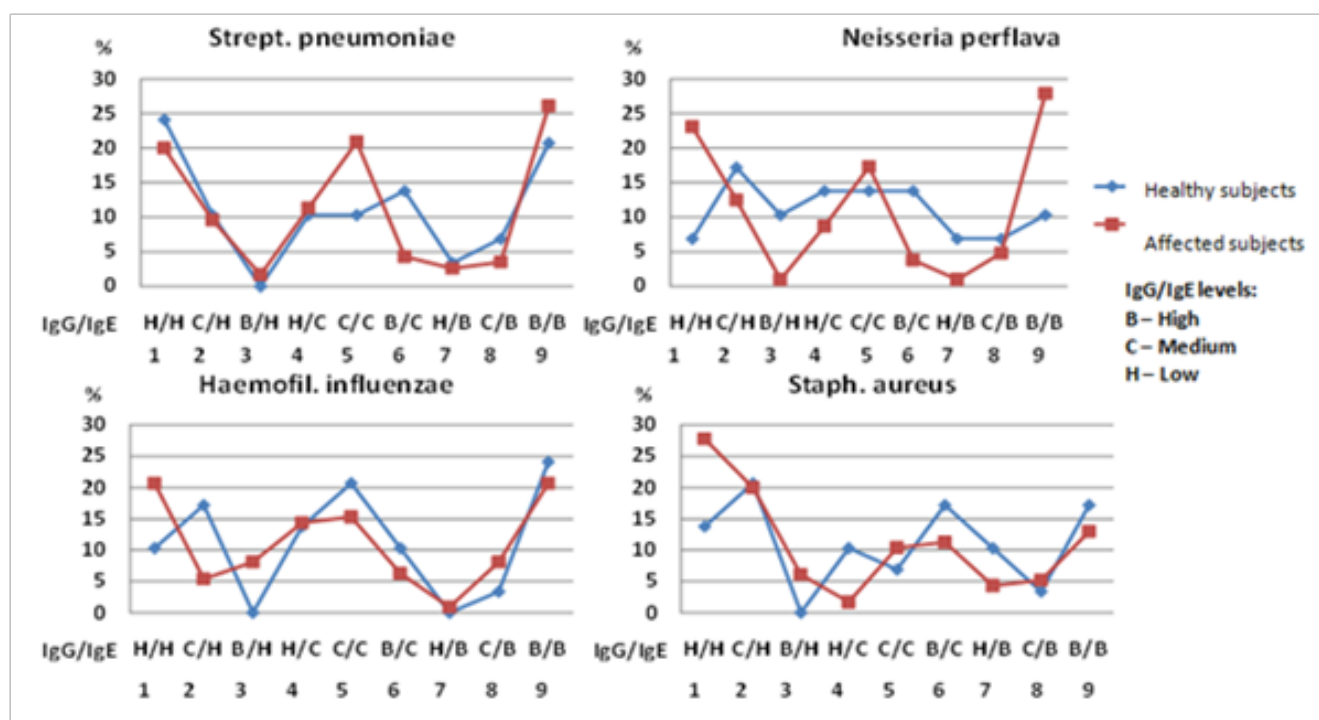


Figure 5 Combination versions of IgG and IgE to bacterial antigens in healthy subjects (n=29) and patients with BA and COPD (n=115) as a percentage of the total number of subjects in that group.

There is almost complete matching of data from healthy and affected subjects, obtained when determining IgG and IgE to *Strept. pneumoniae*. The most common combination of studied immunoglobulins is when they are numerous (version 1) or few (version 9). The rarest obtained combinations are ones where there is a lot of one immunoglobulin but not much of the other (version 3 and 7). Similar results were obtained when studying IgG and IgE to *Haemofilus influenzae*. There was an absence of interaction when analysing IgG and IgE results to *Neisseria perflava* and *Staph. aureus* in healthy and affected subjects. The correlation between immunoglobulins to *Neisseria perflava* in healthy subjects was noted to be very consistent, with a lack of situations described above, where both immunoglobulins display increased or decreased levels.

The statistical significance of the correlation between IgG and IgE to bacteria in healthy and affected subjects is presented in Table 3.

It is worth noting the statistically significant direct correlation between IgG and IgE to *Strept. pneumoniae* and *Haemofilus influenzae*. There is a correlation between these immunoglobulins not only for specific bacteria, but even for different bacteria. IgG to *Haemofilus influenzae* not only correlates with IgE to *Haemofilus influenzae*, but also with IgE to *Strept. pneumoniae*, while IgG to *Strept. pneumoniae* correlates not only with IgE to *Strept. pneumoniae*, but also with IgE to *Haemofilus influenzae*. Patients with various diseases had a stronger statistically significant correlation between IgG and IgE to *Strept. pneumoniae*, *Haemofilus influenzae* and *Neisseria perflava*, than healthy subjects. Other data was obtained

when studying immunoglobulins to *Staph. aureus*: there was only a statistically significant correlation between IgG and IgE to *Staph. aureus*, with no significant link between IgG to *Staph. aureus* and IgE to other bacteria. We did not find a similar link between IgG and IgE to bacteria, in the available literature.

The obtained data allows us to hypothesise about the presence of coordinated actions by the macroorganism to protect itself against

pathogenic respiratory bacterial micro flora (*Strept. pneumoniae* and *Haemofilus influenzae* IgE and IgG). The response of the macroorganism to the activity of non-pathogenic and opportunistic micro flora is not accompanied by complete coordination (*Neisseria perflata* and *Staph. Aureus* IgE and IgG). Further studies are required for the pathogenetic and clinical interpretation of the ascertained fact of coordination between IgG and IgE to bacterial antigens.

**Table 3** The correlation between IgG and IgE content to bacteria in healthy subjects and patients with BA and COPD

IgG		Healthy Subjects			
IgE		Strept. Pneumon	Haemofil Influenzae	Neisseria Perflava	Staph.Aureus
Strept. Pneumon		0.6744	0.489	0.3405	0.2321
		N=29	N=29	N=27	N=29
		P=.000	P=.007	P=.082	P=.226
Haemofil Influenzae		0.5178	0.686	0.4012	0.3486
		N=29	N=29	N=27	N=29
		P=.004	P=.000	P=.038	P=.064
Neisseria Perflava		0.2711	0.3604	0.1475	0.2641
		N=29	N=29	N=27	N=29
		P=.155	P=.055	P=.463	P=.166
Staph.Aureus		-0.2988	-0.2708	-0.5332	0.4398
		N=29	N=29	N=27	N=29
		P=.115	P=.155	P=.004	P=.017
Affected Subjects					
IgE	Strept. Pneumon	0.7506	0.7506	0.6417	-0.0429
		N=115	N=104	N=104	N=115
		P=.000	P=.000	P=.000	P=.649
Haemofil Influenzae		0.2285	0.4751	0.4098	-0.011
		N=115	N=104	N=104	N=115
		P=.000	P=.000	P=.000	P=.908
Neisseria Perflava		0.7399	0.62	0.8123	-0.011
		N=115	N=111	N=104	N=115
		P=.000	P=.000	P=.000	P=.908
Staph.Aureus		0.065	0.0423	0.1078	0.2621
		N=115	N=111	N=104	N=115
		P=.490	P=.659	P=.276	P=.005

## Conclusion

- i. Sensitisation to atopic and infectious allergens can occur in the presence as well as the absence of relevant allergy symptoms in healthy subjects, and in patients with COPD and CAP.
- ii. In all the study subjects, there was a predominance of sensitisation to 4 or more non-infectious allergens. Sensitisation to 4 or more non-infectious allergens was noted to be 3 or more times more common than sensitisation to infectious allergens. With any number of significant allergens in healthy subjects and patients, there was a predominance of sensitisation to non-infectious allergens.
- iii. With any degree of sensitisation in healthy and affected subjects in all clinical groups, there was a predominance of sensitisation to non-infectious allergens.
- iv. Healthy and affected patients had different patterns of combination of non-infectious and infectious sensitisation. The most common combination was significant sensitisation to non-infectious allergens and minor sensitisation to infectious allergens, with a combination of significant sensitisation to non-infectious and infectious allergens being rarer, a combination of minor sensitisation to non-infectious and significant sensitisation to infectious allergens being rarer still, and the rarest being a combination of minor sensitisation to non-infectious and infectious allergens.
- v. A statistically significant direct correlation was established between IgG and IgE to *Strept. pneumoniae* and *Haemophilus influenzae* in healthy and affected subjects. There is a significant correlation between IgG and IgE not only for the respective bacteria, but also the immunoglobulins to different bacteria.
- vi. The IgE and IgG reactions in healthy and affected subjects to *Neisseria perflava* and *Staph. aureus* did not demonstrate a significant correlation.
- vii. The data obtained in this study supports the view of A.D. Ado et al.<sup>28–30</sup> about the role of *Neisseria perflava* and *Staph. aureus* in the appearance and development of BA.

Questions that arise as a result of studying atopic and infectious sensitisation

- i. What are the mechanisms that prevent the clinical appearance of allergy in healthy subjects and patients with COPD and CAP, in the presence of sensitisation to atopic and non-infectious allergens?
- ii. What damage and disruption to the regulation system leads to the clinical manifestation in healthy subjects and patients with COPD, when they have atopic and infectious sensitisation?
- iii. What is the physiological and clinical meaning behind the unidirectional correlation between IgE and IgG content to infectious allergens in healthy and affected subjects?
- iv. What can be used to explain the unique reaction to *Neisseria perflava* and particularly *Staph. aureus*, with the production of IgE and IgG?
- v. Is there a correlation between the level of infectious and non-infectious sensitisation and the features of BA disease?

## Acknowledgements

None.

## Conflict of interest

The author declares no conflict of interest.

## References

1. Bunyavanich S, Schadt EE. Systems biology of asthma and allergic diseases: A multiscale approach. *J Allergy Clin Immunol.* 2005;135(1):31–42.
2. James KM, Peebles RS, Hertert TV. Response to infection in patients with asthma and atopic disease: An epiphenomenon or reflection of host susceptibility? *J Allergy Clin Immunol.* 2012;130(2):343–351.
3. Santillan S, Mehra S, Pardo CMR, et al. Atopic conditions other than asthma and risk of the 2009 novel H1N1 infection in children: a case-control study. *Allergy Asthma Proc.* 2013;34(5):459–466.
4. Holt PG. The mechanism or mechanisms driving atopic asthma initiation: The infant respiratory microbiote moves to center stage. *J Allergy Clin Immunol.* 2015;136(1):15–22.
5. Contoli M, Message SD, Laza SV, et al. Role of different type 3 interferon- $\lambda$  production in asthma exacerbation. *Nat Med.* 2006;12(9):1023–1026.
6. Talbot TR, Hartert TV, Mitchel E, et al. Asthma as a risk factor for invasive pneumococcal disease. *N Engl J Med.* 2005;352(20):2082–2090.
7. Busse WW, Gern JE. Asthma and infections: Is the risk more profound than previously thought? *J Allergy Clin Immunol.* 2014;134(2):260–261.
8. Miller EK, Griffin MR, Edwards KM, et al. Influenza burden for children with asthma. *Pediatrics.* 2008;121(1):1–8.
9. Smith NTA, Silverberg JI, Kusunruksa M, et al. Asthmatic children have increased specific anti-*Mycoplasma pneumoniae* IgM but not IgG or IgE values independent of history of respiratory tract infection. *Pediatr Infect Dis J.* 2013;32(6):599–603.
10. Capili CR, Hettinger A, Rigelman HN, et al. Increased risk of pertussis in patients with asthma. *J Allergy Clin Immunol.* 2012;129(4):957–963.
11. Tseng HF, Smith N, Marcy SM, et al. Incidence of herpes zoster among children vaccinated with varicella vaccine in a prepaid health care plan in United States, 2002–2008. *Pediatr Infect Dis J.* 2009;28(12):1069–1072.
12. Jung JA, Kita H, Yawn BP, et al. Increased risk of serious pneumococcal disease in patients with atopic conditions other than asthma. *J Allergy Clin Immunol.* 2010;125(1):217–221.
13. Kelly YT, Busse WW. Host immune responses to rhinovirus: Mechanisms in asthma. *J Allergy Clin Immunol.* 2008;122(4):671–682.
14. Juhn I. Risks for infection in patients with asthma (or other atopic conditions): Is asthma more than a chronic airway disease? *J Allergy Clin Immunol.* 2014;134(2):247–257.
15. Holt PG, Sly PD. Viral infections and atopy in asthma pathogenesis: new rationales for asthma prevention and treatment. *Nat Med.* 2012;18(5):726–734.
16. Kalliel JN, Goldstein BM, Braman SS, et al. High frequency of atopic asthma in a pulmonary clinic population. *Chest.* 1989;96(6):1336–1340.
17. Antó JM, Pinart M, Akdis M, et al. Understanding the complexity of IgE-related phenotypes from childhood to young adulthood: A mechanisms of the development of allergy (MeDALL) seminar. *J Allergy Clin Immunol.* 2012;129(4):943–954.
18. Zeldin DC, Eggleston P, Chapman M, et al. How exposures to biologicals influence the induction and incidence of asthma. *Environ Perspect.* 2006;114(4):620–626.
19. Craig TJ, King TS, Lemanske RF, et al. Aeroallergen sensitization correlates with PC20 and exhaled nitric oxide in subjects with mild-to-moderate asthma. *J Allergy Clin Immunol.* 2008;121(3):671–677.



20. Boyce JA, Assa'ad A, Burks AW, et al. Guidelines for the diagnosis and management of food allergy in the United States: report of NIAID-sponsored expert panel. *J Allergy Clin Immunol*. 2010;126(6 suppl):S1–S58.
21. Camarda LE, Grayson MH. Can specific IgE discriminate between intrinsic and atopic asthma? *Am J Respir Crit Care Med*. 2011;184(2):152–153.
22. Hannula JK, Laasanen SL, Heikkilä H, et al. IgE allergen component-based profiling and atopic manifestations in patients with Netherton syndrome. *J Allergy Clin Immunol*. 2014;134(4):985–988.
23. Yoo J, Tcheurekdjian H, Lynch SV, et al. Microbial manipulation of immune function for asthma prevention. Inferences from clinical trials. *Proc Am Thorac Soc*. 2007;4(3):277–282.
24. McLoughlin RM, Mills KH. Influence of gastrointestinal commensal bacteria on the immune responses that mediate allergy and asthma. *J Allergy Clin Immunol*. 2011;127(5):1097–1107.
25. Ho SM. Environmental epigenetics of asthma: An update. *J Allergy Clin Immunol*. 2010;126(3):453–465.
26. Platts MTA. The role of immunoglobulin E in allergy and asthma. *Am Respir Crit Care Med*. 2001;164 (8 pt 2):S1–S5.
27. Moldoveanu B, Otmishi P, Jani P, et al. Inflammatory mechanisms in the lung. *J Inflamm Res*. 2009;2:1–11.
28. Holt PG. The mechanism or mechanisms driving atopic asthma initiation: The infant respiratory microbiote moves to center stage. *J Allergy Clin Immunol*. 2015;136(1):15–22.
29. Gerke AK, Hunninghake G. The immunology of sarcoidosis. *Clin Chest Med*. 2008;29(3):379–390.
30. Holtzman MJ, Tyner JW, Kim EY, et al. Acute and chronic airway responses to viral infection. Implications for asthma and COPD. *Proc Am Thorac Soc*. 2005;2(2):132–140.
31. Grayson MH, Holtzman MJ. Lessons from allergic rhinitis versus asthma pathogenesis and treatment. *Immunol Allergy Clin N Am*. 2002;22:845–869.
32. Williams JW, Tjota MI, Sperling AI. The contribution of allergen-specific IgG to the development of Th2-mediated airway inflammation. *J Allergy (Cairo)*. 2002;236075.
33. Ivanov II, Atarashi K, Manel N, et al. Induction of intestinal Th17 cells by segmented filamentous bacteria. *Cell*. 2005;139(3):485–498.
34. Hernandez ML, Mills K, Almond M, et al. IL-1 receptor antagonist reduces endotoxin-induced airway inflammation in healthy volunteers. *J Allergy Clin Immunol*. 2015;135(2):379–385.
35. Kurbacheva OM, Pavlova KS, Kozulina IE. The modern approach to treatment selection for bronchial asthma: from understanding clinical phenotypes to practical aspects. *Russ Med J*. 2013;29:1452–1459.
36. Stone KD, Prussin C, Metcalfe DD. IgE, mast cells, basophils and eosinophils. *J Allergy Clin Immunol*. 2010;125(2 suppl 2):S73–S80.
37. Holt PG, Strickland DH, Hales BJ, et al. Defective respiratory tract immune surveillance in asthma: a primary causal factor in disease onset and progression. *Chest*. 2014;145(2):370–378.
38. Ohru T, Funayama T, Sekizawa K, et al. Effects of inhaled beclomethasone dipropionate on IgE levels and clinical symptoms in atopic asthma. *Clin Exp Allergy*. 1999;29:457–461.
39. Balzar S, Strand M, Rhodes D, et al. IgE expression pattern in lung: Relation to systemic IgE and asthma phenotypes. *J Allergy Clin Immunol*. 2007;119(4):855–862.
40. Agarwal R, Gupta D, Aggarwal AN, et al. Clinical significance of decline in serum IgE levels in allergic bronchopulmonary aspergillosis. *Respir Med*. 2010;104(2):204–210.
41. Novak N, Bieber T. Allergic and nonallergic forms of atopic diseases. *J Allergy Clin Immunol*. 2003;112(2):252–262.
42. Schulman ES, Pohlig C. Rationale for specific allergen testing of patients with asthma in the clinical pulmonary office setting. *Chest*. 2005;147(1):251–258.
43. Armann J, von Mutius E. Do bacteria have a role in asthma development? *Eur Respir J*. 2010;36(3):469–471.
44. Bachert C, van Steen K, Zhang N, et al. Specific IgE against *Staphylococcus aureus* endotoxins: An independent risk factor for asthma. *J Allergy Clin Immunol*. 2012;130(2):376–381.
45. Cheung DS, Ehlenbach SJ, Kitchens T, et al. Development of atopy by severe paramyxovirus infection in mouse model. *Ann Allergy Asthma Immunol*. 2010;105(6):437–433.
46. Tam JS, Jackson WT, Hunter D, et al. Rhinovirus specific IgE can be detected in human sera. *J Allergy Clin Immunol*. 2013;132(5):1241–1243.
47. Aschermann S, Lux A, Baerenwaldt A, et al. The other side of immunoglobulin G: suppressor of inflammation. *Clin Exp Immunol*. 2013;160(2):161–167.
48. Lui CM, Oliveira IC, Diogo CL, et al. Immunoglobulin G subclass concentrations and adolescents with severe asthma. *Pediatr Allergy Immunol*. 2002;13(3):195–202.
49. Agin Ch, Namavary D. Frequency of specific immunoglobulin G antibodies and immediate skin test reactivity to *Aspergillus fumigatus* antigen among adults with allergic asthma. *Int J Medical Toxicol Forens Med*. 2012;2(3):97–102.
50. Gencay M, Rüdiger JJ, Tamm M, Solér M, et al. Increased frequency of *Chlamydia pneumoniae* antibodies in patients with asthma. *Am J Respir Crit Care Med*. 2001;163(5):1097–1100.