

Dermoscopy of awartarising in a melanocytic nevus

Clinical image

A 20 year-old presented to our consultation because of a 1-month apparition of new lesion within the nevus avec occasional bleeding . Clinical examination found 2mm white and keratotic papule located exclusively on the surface of the nevus (Figure1). The nevus (6x4mm) was centered by a terminal hair and had a papillomatous pattern. Dermoscopy of the lesion showed filiform exophytic projection pattern with hair pin vessels (Figure 2 &3). The clinical evaluation with the help of dermoscopy was compatible with the diagnosis of was within naevus. We performed a excision biopsy for histopathologic examination , which showed proliferation of melanocytes in the dermis, cutaneous hypeplasia, compact orthokeratosis and tortuous capillaries with the dermal papillae. No recurrence has appeared during 1 year of follow up since then.



Figure 1 Melanocytic nevus of the cheek in a 25-year-old male patient.

Volume 3 Issue 6 - 2019

Selma El kadiri, Chaoui R, Douhi Z, Elloudi S, BayBay H, Mernissi FZ

Department of Dermatology, CHU Hassan II, Morocco

Correspondence: Selma El kadiri, Department of Dermatology, CHU Hassan II, Fez, Morocco, Email elkadiri-@hotmail.com

Received: November 11, 2019 | **Published:** December 31, 2019

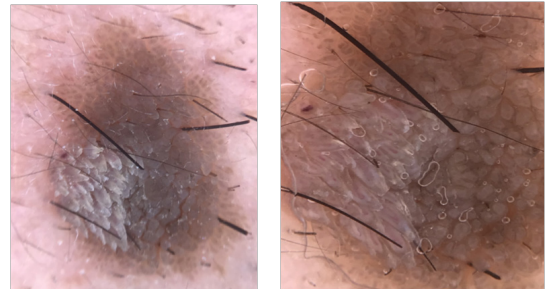


Figure 2-3 Filiform exophytic projection pattern (without immersion figure 2) with hair pin vessels (with immersion figure 3).

Acknowledgment & funding

None.

Conflicts of interest

The authors declare that there are no conflicts of interest.