

Oligometastatic Prostate Cancer: Is It Real?

Abstract

The oligometastatic state has emerged as a transitional stage between localized and disseminated disease, potentially curable if treated with a definitive intent. Nowadays, it is being diagnosed with a rising frequency due to the advancement of imaging, MRI and functional. The prompt detection of oligometastatic prostate cancer might give the false impression of improved outcomes due to lead time bias and expose patients to treatment related toxicities. However, metastases directed therapies seem to decrease the need for subsequent palliative interventions and toxicity rates are low in high volume centers. Finally, there is some biological evidence that oligometastatic state is a genuine entity, yet we lack robust data on how to select patients for treatment intensification or how the latter affects overall survival.

Introduction

There is a paraphrase often attributed to Socrates that “the beginning of wisdom is the definition of terms”. Oligometastasis is a compound word formed from oligo which means few or scant and metastases. The discussion, therefore, centers on prostate cancer patients with “a limited number of metastases”. Although there is no consensus many studies use ≤ 5 as a cut-off point [1,2] whereas others use ≤ 3 with additional constraints on the location of metastatic foci [3].

The term oligometastasis (o-mets) was first coined by Hellman & Weichselbaum [4]. The data available at the time suggested a stepwise progression of cancer from localized disease to an intermediate state of malignancy and then to widespread metastases. The practical implication of this suggested paradigm shift was that some patients could potentially be cured with definitive local therapies or achieve long-term remissions that could not be feasible with systemic therapies.

Although most of prostate cancer patients have localized disease, 12% have regional disease and 4% have distant metastatic spread at the time of diagnosis [1]. For these patients, there are many treatment options, given either alone or combined: androgen deprivation therapy (ADT), chemotherapy and local ablative therapies. Current guidelines [5] do not include recommendations for local treatments minus the case of lymph node positive disease, following the publication of STAMPEDE’s trial results. In this study patients with N+M0 disease in the control arm that received radiotherapy, in a nonrandomized manner, had a better 2-year failure-free survival [6].

Altering Disease Course: Reality or Wishful Thinking?

In Figure 1 the natural history of a patient with prostate cancer is plotted against time [7]. The horizontal axis represents time and the vertical axis is PSA concentration. Besides PSA, we could plot the disease course against some other quantifiable variable e.g. symptomatic or radiographic response. The blue circles represent the opportunities to alter the disease course via a metastasis-directed therapy (MDT) at the time of maximal response. The area

Mini Review

Volume 8 Issue 5 - 2017

Efstathios Kamperis^{1*}, Chionia Kodona² and Giannouzakos Vasileios¹

¹Department of Radiation Oncology, Papageorgiou General Hospital, Greece

²Department of Medical Physics, Papageorgiou General Hospital, Greece

***Corresponding author:** Efstathios Kamperis, Radiation Oncology Department, Papageorgiou General Hospital, Thessaloniki, Greece, Tel: +30 2313 32 3417; Email: ekamperi@gmail.com

Received: September 24, 2017 | **Published:** October 26, 2017

of the circles is qualitatively proportional to that probability. As the disease evolves, the chances are getting smaller and smaller and at some point, they disappear. The case of an intermediate clinical entity, potentially curable with local ablative techniques has been described by some as wishful thinking [8]. We do have though some supporting evidence that oligometastatic state represents a true intermediate biological state [9]. This state is explained on the basis of microRNA-mediated attenuation of prometastatic epithelial plasticity programs, such as the epithelial-mesenchymal transition [10]. These results demonstrate a biological basis for o-mets and a potential for using microRNA expression to identify patients most likely to remain oligometastatic after MDT.

A Note of Caution: Lead Time Bias

Figure 2 depicts the natural history of a cancer from time zero to death. With rigorous imaging surveillance, we identify oligometastases before they become symptomatic and we introduce the so-called lead time bias. Patients end up receiving therapy at an earlier stage of their disease evolution, potentially being exposed to treatment side effects. At the same time survival appears to increase, although in reality remains unchanged and the overall morbidity is lengthened. Nevertheless, we do not think that the results we observe in various series could be justified solely on the basis of lead time bias. Also, \geq grade 3 treatment side effects of SABRT in experienced centers are particularly low [11].

Patient Selection: a Few among Many?

We are thus brought to the fundamental question on how to select patients for local treatment intensification. Given that we currently lack high quality prospectively validated predictive factors, we must rely on the clinical, radiographic, scintigraphic and serologic phenotype of the disease. Such parameters include the interval between radical local treatment and the development of metastases [12]. Also, the duration and depth of response to hormonal manipulation are known to predict overall outcomes.

The PSA kinetics along with the number of metastases, up to five [2] or in some series up to three³, are surrogate markers for tumor burden and biological aggressiveness. Finally, the metastatic site itself needs to be considered. Lymph node and bone metastases herald a better prognosis than visceral mets and even between the group of patients with visceral disease those with lung mets do better than those with liver [13,14]. Besides, patients with

visceral metastatic foci are under-represented in most of the published retrospective studies [11]. Hence, any extrapolation of the conclusions from these studies to patients with visceral disease is not prudent. Obviously, there is a whole spectrum of patients in between these two extremes and we lack the tools to stratify them.

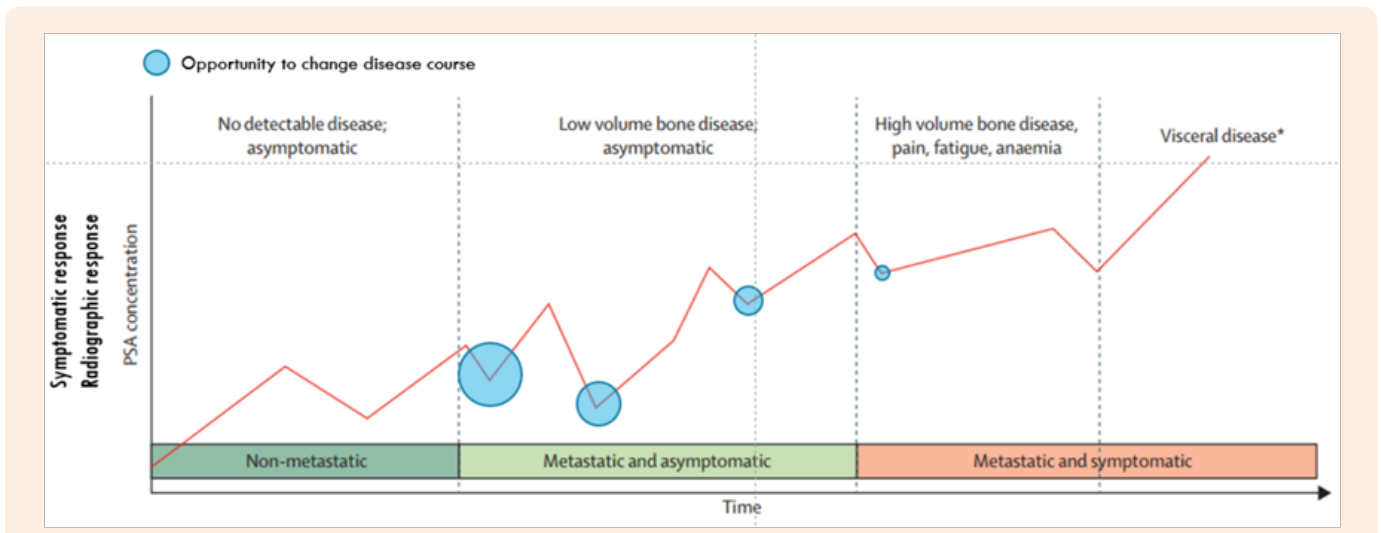


Figure 1: Natural history of a patient with prostate cancer is plotted against time [7].

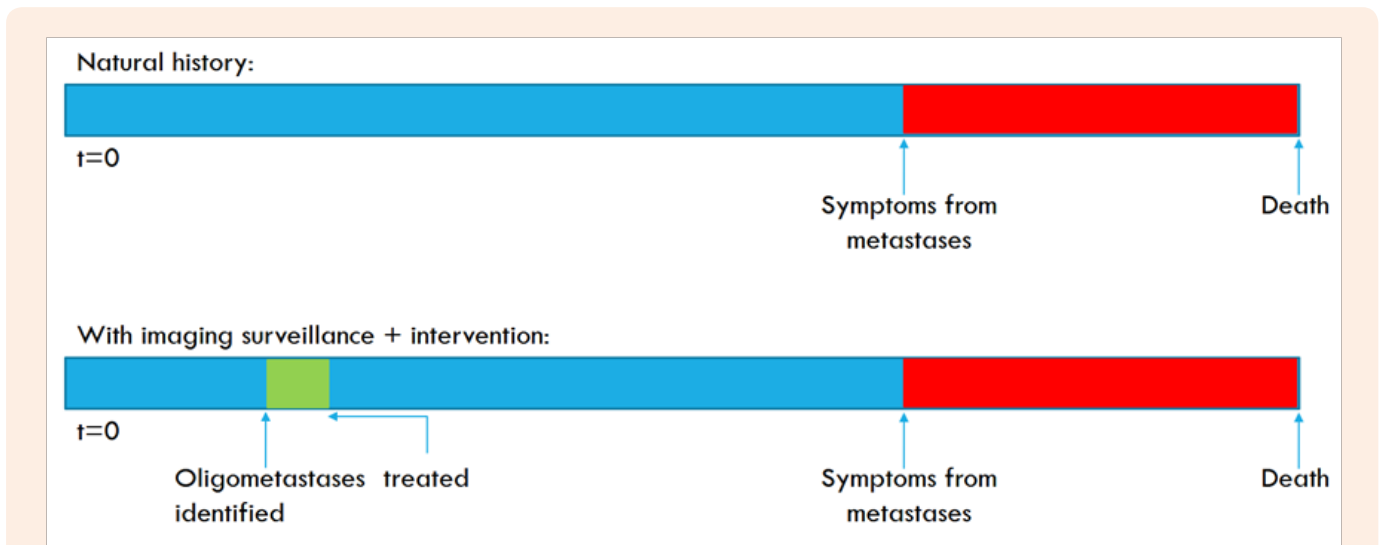


Figure 2: Natural history of prostate cancer and lead time bias.

Unfortunately, only a fraction of oligometastatic patients will experience long-term disease control with aggressive treatment of limited metastatic foci. Identification of this subset may be enhanced by using molecular selection criteria, which could enrich the therapeutic benefit of MDT, while redirecting patients unlikely to benefit from surgery or radiotherapy to systemic treatments. Similarly, patients with metastatic disease that at first presentation would appear not amenable to local treatment but exhibit an oligometastatic genotype might benefit from a combined aggressive local and systemic approach [9].

What Others Do: Consensus Guidelines

Of particular interest is the report of the latest advanced prostate cancer consensus conference (APCC) [3]. The panel considered the following cases. In the first clinical scenario, a patient is diagnosed with synchronous o-mets and an untreated primary. Most physicians would choose a local ablative therapy along with long term ADT with or without upfront docetaxel. We would probably opt for local ablative plus short-term ADT, potentially sparing the patient from the side effects of long

term hormonal blockage. In the second clinical scenario, a patient presents with o-mets after having been treated with a local treatment of the primary tumor. Most would recommend lifelong ADT with or without docetaxel. Depending on the clinical and radiographic phenotype of the disease, we would at least consider the possibility of a local ablative therapy plus short-term ADT with or without docetaxel. In the last clinical scenario, a patient with a rising PSA while he is on ADT is diagnosed with oligometastases. We agree that this might not even comprise a meaningful clinical entity and a continuation of ADT plus systemic therapy would represent the most relevant course of treatment. Perhaps we could contemplate a local ablative therapy in patients with favorable prognostic factors.

The Randomized Trials

Fortunately, there are quite a few ongoing trials that will soon shed some light on this highly debated topic. For example, the ORIOLE trial randomizes patients with up to 3 mets and an hormone-naïve disease to observation or SBRT [11]. Similarly, the STOMP trial from Belgium will examine surveillance or MDT for oligometastatic prostate cancer recurrence; it's a phase 2 randomized trial [15]. Of particular interest is the OLIGOPELVIS trial from GETUG group, a phase 2 multicenter trial of combined salvage RT and hormone therapy in oligometastatic pelvic node relapses [16].

CA184-043 was a very important multicenter, randomized, double-blind, phase III clinical trial comparing ipilimumab versus placebo after radiotherapy with metastatic castration-resistant prostate cancer that had progressed after docetaxel chemotherapy [17]. Patients received radiotherapy to bone metastases (8 Gy) and then randomized to either ipilimumab or placebo. Although there was no difference in overall survival (primary endpoint), in a post-hoc subgroup analysis a favorable group of patients emerged consisting of those with no visceral compromise, $Hb \geq 11$ g/dl and $ALP \leq 1.5$ ULN. In this group, despite patients been heavily pretreated, overall survival was 22.7 months with ipilimumab versus 15.8 months with placebo. The reason why we think this trial is important is because data are emerging on the interplay between high dose radiotherapy and immunotherapy [18].

Conclusion

There is an intermediate state in prostate cancer between localized and widespread disease with a distinct biological profile, probably underestimated thus undertreated. There is an urgent need for prospective clinical trials to validate patient selection criteria and establish the standard of care. Until then, patients with late recurrences, deep and prolonged response to ADT, one to three number of metastases and lack of visceral disease represent good candidates for treatment intensification in the context of metastasis directed therapies.

References

- Broughman JR, Chen RC (2017) Management of Node-Positive and Oligometastatic Prostate Cancer. *Semin Radiat Oncol* 27(1): 79-86.
- Singh D, Yi WS, Brasacchio RA, Muhs AG, Smudzin T, et al. (2004) Is there a favorable subset of patients with prostate cancer who develop oligometastases? *Int J Radiat Oncol Biol Phys* 58(1): 3-10.
- Gillessen S, Attard G, Beer TM, Beltran H, Bossi A, et al. (2017) Management of Patients with Advanced Prostate Cancer: The Report of the Advanced Prostate Cancer Consensus Conference APCCC 2017. *Eur Urol* S0302-2838(17): 30497-30499.
- Hellman S, Weichselbaum RR (1985) Oligometastases. *J Clin Oncol* 13(1): 8-10.
- (2017) NCCN Clinical Practice Guidelines in Oncology (NCCN Guidelines). Prostate Cancer.
- James ND, Spears MR, Clarke NW, Dearnaley DP, Mason MD, et al. (2016) Failure-Free Survival and Radiotherapy in Patients With Newly Diagnosed Nonmetastatic Prostate Cancer: Data From Patients in the Control Arm of the STAMPEDE Trial. *JAMA Oncol* 2(3): 348-357.
- Lorente D, Mateo J, Perez-Lopez R, de Bono JS, Attard G (2015) Sequencing of agents in castration-resistant prostate cancer. *Lancet Oncol* 16: e279-292.
- Palma DA, Salama JK, Lo SS, Senan S, Treasure T, Govindan R, et al. (2014) The oligometastatic state - separating truth from wishful thinking. *Nat Rev Clin Oncol* 11: 549-557.
- Yves A Lussier, H Rosie Xing, Joseph K Salama, Nikolai N Khodarev, Yong Huang, et al. (2011) MicroRNA expression characterizes oligometastasis(es). *PLoS One* 6: e28650.
- Tran PT, Antonarakis ES (2017) Altering the Natural History of Oligometastatic Prostate Cancer With Local Therapies: Reality Versus Illusion. *J Oncol Pract* 13(1): 21-24.
- Tosoian JJ, Gorin MA, Ross AE, Pienta KJ, Tran PT, et al. (2017) Oligometastatic prostate cancer: definitions, clinical outcomes, and treatment considerations. *Nat Rev Urol* 14(1): 15-25.
- Schweizer MT, Zhou XC, Wang H, Yang T, Shaukat F, Partin AW, et al. (2013) Metastasis-free survival is associated with overall survival in men with PSA-recurrent prostate cancer treated with deferred androgen deprivation therapy. *Ann Oncol* 24(11): 2881-2886.
- Halabi S, Kelly WK, Ma H, Zhou H, Solomon NC, et al. (2016) Meta-Analysis Evaluating the Impact of Site of Metastasis on Overall Survival in Men With Castration-Resistant Prostate Cancer. *J Clin Oncol* 34(14): 1652-1659.
- Gandaglia G, Karakiewicz PI, Briganti A, Passoni NM, Schifmann J, et al. (2015) Impact of the Site of Metastases on Survival in Patients with Metastatic Prostate Cancer *Eur Urol* 68(2): 325-334.
- Decaestecker K, De Meerleer G, Ameye F, Fonteyne V, Lambert B, et al. (2014) Surveillance or metastasis-directed Therapy for Oligometastatic Prostate cancer recurrence (STOMP): study protocol for a randomized phase II trial. *BMC Cancer* 14: 671.
- Supiot S, Rio E, Pecteau V, Mauboussin MH, Campion L et al. (2015) OLIGOPELVIS - GETUG P07: a multicentre phase II trial of combined salvage radiotherapy and hormone therapy in oligometastatic pelvic node relapses of prostate cancer. *BMC Cancer* 15: 646.
- Kwon ED, Drake CG, Scher HI, Fizazi K, Bossi A et al. (2014) Ipilimumab versus placebo after radiotherapy in patients with metastatic castration-resistant prostate cancer that had progressed after docetaxel chemotherapy (CA184-043): a multicentre, randomised, double-blind, phase 3 trial. *Lancet Oncol* 15(7): 700-712.
- Bernstein MB, Krishnan S, Hodge JW, Chang JY (2016) Immunotherapy and stereotactic ablative radiotherapy (ISABR): a curative approach? *Nat Rev Clin Oncol* 13(8): 516-524.