

Prediction of stress related gastrointestinal bleeding in critically ill children using PRISM III score

Abstract

Background: Stress-induced ulcer bleeding is one of the common complications in critically ill patients admitted to the intensive care unit. The PRISM (Pediatric Risk of Mortality) scoring systems can assess the severity of disease in a given population of sick children.

Aim: To set a cut off level of PRISM III score which can predict that at this point stress ulcer had occurred, and at this cut off level prophylactic treatment can be justified without appearance of fresh bleeding.

Methodology: One-hundred and Thirty-five Egyptian children, admitted in PICU of El Mounira Children hospital, Cairo University, with variable critically illness were included. PRISM III score was calculated for each child within 24 hours from admission with surveillance of patients who developed upper GIT bleeding during PICU stay.

Results: Overall mortality rate was 40%. The mean score of PRISM-III for total 135 PICU admissions was 6.02 ± 5.48 (score range: 0-28). Thirty-nine (28.9%) of our cases had developed GIT bleeding, compared to 96 (71.1%) patients without bleeding. Mechanical ventilation was significantly associated with stress ulcer bleeding ($P < 0.0001$). The cut-off point of 7 of PRISM III score has highest sensitivity and specificity as a better predictor of GIT bleeding. Among patients with PRISM III score less than 7; 91.5% had no GIT bleeding while 60% of cases with PRISM III score ≥ 7 had GIT bleeding, $p < 0.0001$.

Conclusion: At PRISM III score value ≥ 7 , even if no clinical GIT bleeding, prophylactic treatment is justified.

Keywords: GIT bleeding, PRISM score, Intensive care, Stress ulcer

Volume 1 Issue 4 - 2014

Hanaa Ibrahim Rady,¹ Ayman Emil,¹ Khaled Samy, I Shaymaa Baher²

¹Department of Pediatrics, Cairo University, Egypt

²Department of Community Medicine, Cairo University, Egypt

Correspondence: Hanaa I Rady, Department of Pediatrics, Cairo University, Gameat el Doual Al Arabia Street, Mohandessin, Egypt, Tel +201001482444, Fax 0020233473960, Email hanaaarady@gmail.com

Received: September 08, 2014 | **Published:** October 14, 2014

Abbreviations: PRISM, Pediatric Risk of Mortality; GI, Gastrointestinal; ICU, Intensive Care Unit; PICU, Pediatric Intensive Care Unit; PRISM, Pediatric Risk of Mortality

Introduction

Stress related gastrointestinal (GI) bleeding is one of the common complications in critically ill patients.¹ In pediatric patients, the prevalence of GI bleeding ranges from 6 to 25%, with life threatening bleeding rarely seen.^{2,3} Within the first 24 hours after intensive care unit (ICU) admission, approximately 75% to 100% of critically ill patients admitted with thermal injuries or after major surgical intervention, have some endoscopic evidence of gastro-duodenal or upper GI lesions.⁴

For this reason, critically ill patients in the ICU may benefit from stress ulcer prophylaxis,⁵ but, it has been associated with major complications, such as hospital-acquired pneumonia with colonization of the gut due to decreased stomach acidity.⁶ The scoring systems that have been developed as scales for evaluation of ICUs' function are helpful tools assisting basic decision making and further planning for progression.⁷ In any given pediatric ICU (PICU), there is a close correlation between PRISM III (Pediatric Risk of Mortality) score, the number of patients' impaired organ systems during the first 12-24 h of admission and risk of mortality.^{8,9}

The aim of this study was to set a cut off level of PRISM score which can predict that at this point stress ulcer had occurred, and at this PRISM value, prophylactic treatment can be justified before the appearance of frank bleeding.

Methodology

A prospective cohort analytic study was done on all critically ill children admitted to the PICU of El Mounira Children hospital, Cairo University, over a period of 6 months from June 2012 to November 2012.

A. Subjects

All children aged between 3months-12 years old are included. Exclusion criteria:

- Previous history of GI bleeding
- Known coagulopathy problems
- Recent GI tract surgery
- Brain death

B. Intervention

I. Clinically

History taking and clinical examination of the child including: blood pressure, heart rate, temperature, mental status and pupillary response

II. Laboratory investigations

- Arterial blood gases
- Serum glucose level
- Serum potassium level

- d. Serum creatinine and blood urea nitrogen levels
- e. Complete blood count and
- f. Bleeding profile

III. Calculating the PRISM III score for each child upon admission (Table 1).¹⁰

IV. Follow up of each patient since his admission till discharge to detect the occurrence of stress related GIT bleeding. Stress related GIT bleeding was defined as overt bleeding (in the absence of other causes of bleeding like coagulation defects, traumatic from intubation or Ryle insertion).

V. The standard treatment of gastrointestinal bleeding prophylaxis is proton pump inhibitors or histamine-2 blockers.

C. Specimen collection and preparation

Blood samples were taken from the patients using wide-bore needle and withdrawn slowly from antecubital vein to avoid

hemolysis of RBCs by careful venepuncture. These samples were divided into 3 aliquots, first aliquot was added to heparin tube for ABG measurements, second aliquot was added to EDTA tube for CBC counts and the third aliquot was added to a dry tube, allowed to be clotted for 30 minutes, and then separated by centrifugation at 4000 rpm for 5 minutes for measurements of serum glucose level, serum potassium level, serum creatinine level and blood urea nitrogen level.

D. Statistical analysis

Analysis of data was done by using SPSS (statistical program for social science version 15) as follows:

- a) Description of quantitative variables as mean, SD and range
- b) Description of qualitative variables as number and percentage
- c) Unpaired t-test was used to compare two groups as regard quantitative variable in parametric data (SD<25% mean)
- d) Mann Whitney Willcoxon test was used to compare two groups as regard non parametric data (SD>50% Mean)

Table 1 Pediatric risk of mortality score III.¹⁰

Variable	Age Restrictions				Score
	Neonate	Infant	Child	Adolescent	
Systolic blood pressure (mmHg)	40-55	45-65	55-75	65-85	3
	<40	<45	<55	<65	7
	All ages <33°C or >40°C				3
Temperature	All ages: stupor or coma (GCS <8)				5
Mental status	Neonate	Infant	Child	Adolescent	3
	215-225	215-225	185-205	145-155	
	>225	>225	>205	>155	
Heart rate	All ages = One pupil fixed, pupil >3mm				7
	All ages = Both fixed, pupil >3mm				11
Acidosis (pH) or total CO ₂ (mmol/L)	All ages = pH 7.0-7.28 or total CO ₂ 5-16.9				2
	All ages = pH <7.0 or total CO ₂ <5				6
pH	All ages = 7.48-7.55				2
	All ages >7.55				3
PCO ₂ (mmHg)	All ages = 50.0-75.0				1
	All ages >75.0				3
Total CO ₂ (mmol/L)	All ages >34.0				4
Arterial PaO ₂ (mmHg)	All ages = 42.0-49.9				3
	All ages <42.0				6
Glucose	All ages >11.0 mmol/L				2
Potassium	All ages >6.9 mmol/L				3
Creatinine (mmol/L)	Neonate	Infant	Child	Adolescent	2
	>75	>80	>80	>115	
Urea (mmol/L)	Neonate	All other ages			3
	>4.3	>5.4			
White blood cells	All ages < 3000 cells/mm ³				4
Prothrombin time (PT) or partial thromboplastin time (PTT)	Neonate	All other ages			3
	PT >22.0 sec or PTT >85.0	PT >22.0 sec or PTT >57.0 sec			
Platelets (cells/mm ³)	All ages = 100,000 to 200,000				2
	All ages = 50,000 to 99,999				4
	<50,000				5

Table 2 Characteristics of children included in this study

Characteristics Studied Cases (n=135)	n (%)	
Gender	Male	77 (57.0)
	Female	58 (43.0)
Respiratory Support	Not ventilated	80 (59.3)
	Ventilated	55 (40.7)
GIT Bleeding	No bleeding	96 (71.1)
	Coffee ground	22 (16.3)
	Hematemesis	17 (12.6)

Table Continued...

Characteristics Studied Cases (n=135)		n (%)
Outcome	Discharged	81 (60.0)
	Died	54 (40.0)
	Respiratory System	63 (46.67)
	Central Nervous System	39 (28.89)
Diagnosis-Related Groups	Cardiovascular System	26 (19.26)
	Metabolic and electrolytes disturbance	3 (2.22)
	Renal System	2 (1.48)
	Gastrointestinal System	2 (1.48)

Table 3 PRISM III score in children with gastro-intestinal bleeding

PRISM	Sensitivity	Specificity	±LR	-LR	Significance
>2	94.87	38.54	1.54	0.13	
>4	89.74	63.54	2.46	0.16	
>5	82.05	73.96	3.15	0.24	
>7 *	82.05	86.46	6.06	0.21	0.0001
>8	64.10	93.75	10.26	0.38	
>10	43.59	95.83	10.46	0.59	

PRISM III, Pediatric risk of mortality score III; +LR, Positive Likelihood Ratio; -LR, Negative likelihood ratio

Table 4 PRISM III score and gastro-intestinal bleeding

GIT Bleeding	PRISM III Score < 7 n=82	PRISM III Score > 7 n=53	p Value
No Bleeding	75 (91.5 %)	21 (39.6 %)	
Bleeding	7 (8.5 %)	32 (60.4 %)	<0.0001

PRISM III, Pediatric Risk of Mortality Score III

Results

This study was done on 135 Egyptian children [77 males (57%) and 58 females (43%)] admitted in PICU of El Mounira Children hospital, Cairo University, with variable critical illness. Their mean age was 26.44±20.86 months and the mean of their PRISM-III score was 6.02±5.48 (score range: 0-28). Table 2 showed that the frequency of males was higher than females; respiratory problems (46.67%) represented the major indication for ICU admission and the mortality rate was 40%.

Ninety six (71.1%) of admitted cases had no GIT bleeding, 22(16.3%) had coffee-ground colored bleeding and 17(12.6%) had fresh hematemesis. Thirty nine (28.9%) patients had GIT bleeding, compared to 96 (71.1%) patients without bleeding. GIT bleeding was more common among patients on mechanical ventilation (32 of mechanically ventilated cases had GIT bleeding vs 23 didn't have GIT bleeding, P<0.0001). Mortality rate was significantly higher in the groups of children who developed gastrointestinal bleeding (P<0.0001). Although males (64.1%) were more affected with GIT bleeding than females (35.9%); it was statistically insignificant (p=0.422). Table 3 showed that PRISM III score cut-off value of (7) in relation to GIT bleeding had a sensitivity (82.05%) and specificity (86.46%), p=0.0001; with area under the curve (AUC) = 0.875 as shown in Figure 1.

Of the 135 studied cases, 82 patients had PRISM III score less than 7, only seven (8.5%) of them had GIT bleeding; while 53 patients had PRISM III score more than or equal 7; thirty two (60%) of them had GIT bleeding with statistically significant difference p < 0.0001 (Table 4). The mortality rate was 66% (35/53) in patient with PRISM III score more than or equal 7; compared to 23.2% (19/82) in patients with PRISM III score less than 7; p value < 0.0001 (Figure 2).

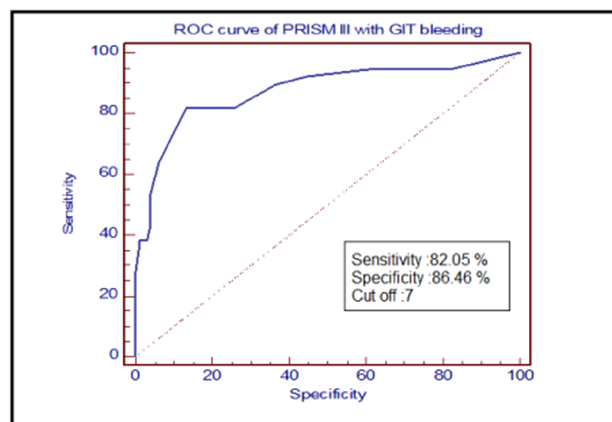


Figure 1 Showing PRISM III score and its relation to gastro-intestinal bleeding [Area under the curve (AUC) = 0.875].

Discussion

Our analytic study was done on 135 Egyptian children admitted in PICU of El Mounira Children hospital, Cairo University, with variable critical illness. The mean age of patients in this study was (26.44±20.86) months. The patients enrolled in the present study were younger than those in the original validation populations for PRISM III where the mean age of patients was ranged between 33 and 35 months.^{9,11,12} PRISM III scores have been studied extensively in more than one study.¹³⁻¹⁷ By comparing our results with above mentioned studies it can be claimed that mortality rate of our PICU (40%) was close to these studies. They have mortality rates ranged from 35 to 38%.

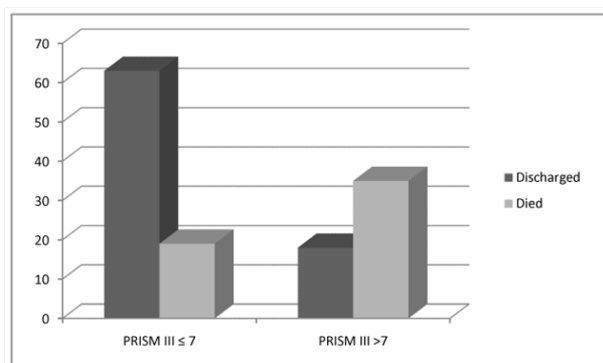


Figure 2 Showing PRISM III score in relation to outcome ($p < 0.0001$).

Similar to our study, Aragao et al.¹⁸ observed that male patients had a higher risk of death than females. We found that GIT bleeding was more in mechanically ventilated cases and PRISM III cut-off value of ≥ 7 was related to the presence of GIT bleeding. A study by Chaïbou et al.¹⁹ found three independent risk factors for major upper gastrointestinal bleeding in critically ill children: respiratory failure, coagulopathy, and a pediatric risk of mortality (PRISM) score > 10 . In agreement with our results, several studies have suggested that mechanical ventilation is one of the most significant of various probable risk factors for this condition.¹⁸

Similar to previous studies done in adults and children, the mechanical ventilation was the most significant risk factor for stress-induced gastrointestinal bleeding.^{5,19,20} In adults, the Blatchford risk score is a validated risk-stratification tool that can accurately identify patient risk using clinical and laboratory variables. The score ranges from 0 to 23. A score of 0 identifies a low risk patient, while a score of 1 or above identifies a patient as high risk. Although externally validated, the Blatchford risk score is useful mostly in identifying low-risk patients because the high-risk category encompasses a wide range of scores (1–23).²¹

Moreover, the Rockall risk score can be used but it's not validated in pediatric age group.²² We also found a high prevalence of overt upper gastrointestinal bleeding (28.9%), which is comparable to the retrospective report section from Kuusela et al.²⁰ in neonates. The mortality rate was high (66%) in patient with PRISM III score ≥ 7 and (23.2%) only in patients with PRISM III score < 7 with; p value < 0.0001 . In a study done by De Leon et al. [23] on 170 Mexican infants, the mean PRISM-III score and observed mortality rate in subgroups with PRISM-III ≥ 8 and < 8 were 52.2% and 24.7% respectively. These results are at the same direction as ours.

Also in agreement with our results, Tan et al.¹⁴ selected a cut-off point of 8 to be a better predictor of mortality. Analysis of the 2 groups PRISM III < 8 and PRISM III ≥ 8 , showed that there was a 15.8 times increased risk of mortality (95% CI: 2.0 to 127.8) in the latter group. While in Bellad et al.²⁴ study, overall mortality was 16.7%. A cut off score of 15, was associated with 89.2% accuracy.

Conclusion

The cut-off value of PRISM III score 7 had highest sensitivity and specificity and can be used to predict GIT bleeding in PICU patients. At this PRISM III score value of ≥ 7 even if no clinical GIT bleeding, prophylactic treatment is justified.

Funding details

None.

Acknowledgments

None.

Conflicts of interests

Authors declare that there is no conflict of interest.

References

- Pimentel M, Roberts DE, Bernstein CN, et al. (2000) Clinically significant gastrointestinal bleeding in critically ill patients in an era of prophylaxis. *Am J Gastroenterol.* 95(10):2801–2806.
- Deerojanawong J, Peongsujarit D, Vivatvakin B, et al. Incidence and risk factors of upper gastrointestinal bleeding in mechanically ventilated children. *Pediatr Crit Care Med.* 2009;10(1):91–95.
- Hizal G, Ozen H. Gastrointestinal bleeding in children. *J Pediatr Sci.* 2011;3(4):100.
- Spirt MJ, Stanley S. Update on stress ulcer prophylaxis in critically ill patients. *Crit Care Nurse.* 2006;26(1):18–20.
- Cook DJ, Fuller HD, Guyatt GH, et al. Risk factors for gastrointestinal bleeding in critically ill patients. Canadian Critical Care Trials Group. *N Engl J Med.* 1994;330(6):377–381.
- Beaulie M, Williamson D, Sirois C, et al. Do proton-pump. Do proton-pump inhibitors increase the risk for nosocomial pneumonia in a medical intensive care unit? *J Crit Care.* 2008;23(4):513–518.
- Bilan N, Galehgoib BA, Emadaddin A, et al. Risk of mortality in pediatric intensive care unit, assessed by PRISM III. *Pak J Biol Sci.* 2009;12(6):480–485.
- Brady AR, Harrison D, Black S, et al. Assessment and optimization of mortality prediction tools for admissions to pediatric intensive care in the United Kingdom. *Pediatrics.* 2006;117(4):e733–e742.
- Slater A, Shann F, Pearson G. PIM2: a revised version of the Pediatric Index of Mortality. *Intensive Care Med.* 2003;29(2):278–285.
- Pollack MM, Patel KM, Ruttimann UE. PRISM III: an updated Paediatric Risk of Mortality score. *Crit Care Med.* 1996;24(5):743–752.
- Pollack MM, Ruttimann UE, Getson PR. Pediatric risk of mortality (PRISM) score. *Crit Care Med.* 1998;16(11):1110–1116.
- Costa GA, Delgado AF, Ferraro A, et al. Application of the Pediatric Risk of Mortality Score (PRISM) score and determination of mortality risk factors in a tertiary pediatric intensive care unit. *Clinics.* 2010;65(11):1087–1092.
- Shann F, Pearson G, Slater A, et al. Pediatric index of Mortality (PIM): a mortality prediction model for children in intensive care. *Intensive Care Med.* 1997;23(2):201–207.
- Tan GH, Tan TH, Goh DYT, et al. Risk factors for predicting mortality in a pediatric intensive care unit. *Ann Acad Med Singapore.* 1998;27(6):813–818.
- El-Nawawy A. Evaluation of the outcome of patients admitted to the pediatric intensive care unit in Alexandria using the pediatric risk of mortality (PRISM) score. *J Trop Pediatr.* 2003;49(2):109–114.
- Bhatia RC, Singh D, Gautam A, et al. Validity of PRISM III scores as a predictive tool for mortality in PICU in Punjab. NCPCC–03. NCPCC 2005–Conference Abstracts. *Pediatr ic Oncall.* 2006.
- Thukral A, Lodha R, Irshad M, et al. Performance of Pediatric Risk of Mortality (PRISM), Pediatric Index of Mortality (PIM), and PIM2 in a pediatric intensive care unit in a developing country. *Pediatr Crit Care Med.* 2006;7(4):356–361.

18. Aragão RCF, Albuquerque MFPM, Mello MJG, et al. Risk factors associated with death in children admitted to a pediatric intensive care unit. *J Trop Pediatr*. 2001;47(2):86–91.
19. Chaibou M, Tucci M, Dugas MA, et al. Clinically significant upper gastrointestinal bleeding acquired in a pediatric intensive care unit: a prospective study. *Pediatrics*. 1998;102(4 pt 1):933–938.
20. Kuusela AL, Maki M, Ruuska T, et al. Stress-induced gastric findings in critically ill newborn infants: frequency and risk factors. *Intensive Care Med*. 2000;26(10):1501–1506.
21. Blatchford O, Murray WR, Blatchford M. A risk score to predict need for treatment for upper gastrointestinal haemorrhage. *Lancet*. 2000;356(9238):1318–1321.
22. Rockall TA, Logan RF, Devlin HB, et al. Risk assessment after acute upper gastrointestinal haemorrhage. *Gut*. 1996;38(3):316–321.
23. De Leon AL, Romero-Gutierrez G, Valenzuela CA, et al. Simplified PRISM III score and outcome in the pediatric intensive care unit. *Pediatr Int*. 2005;47(1):80–83.
24. Bellad R, Rao S, Patil VD, et al. Outcome of intensive care unit patients using pediatric risk of mortality (PRISM) score. *Indian Pediatr*. 2009;46(12):1091–1092.