

Enhancing learning systems through artificial intelligence

Abstract

Artificial Intelligence (AI) is increasingly reshaping the landscape of education by enabling personalized, efficient, and data-driven learning experiences. This paper explores the role of AI in transforming education through applications such as intelligent tutoring systems, adaptive learning platforms, automated grading, and predictive analytics for student performance. By analyzing recent studies and case examples, the paper highlights how AI can enhance student engagement, improve learning outcomes, and reduce the administrative burden on educators. At the same time, challenges such as algorithmic bias, data privacy, and the digital divide are critically examined. The findings suggest that while AI offers significant potential to revolutionize teaching and learning, its implementation must be guided by ethical principles, inclusivity, and careful integration into existing educational frameworks. This study provides insights for educators, policymakers, and technology developers seeking to leverage AI for effective and equitable education.¹ Artificial Intelligence (AI) is increasingly transforming the education sector by enhancing the quality, accessibility, and efficiency of learning. This paper explores the role of AI in enabling personalized learning experiences through adaptive systems that respond to individual student needs, abilities, and learning styles. It also examines the use of intelligent tutoring systems, automated assessment tools, and data analytics in improving educational outcomes and supporting educators in decision-making processes. Furthermore, AI-powered technologies contribute to expanding access to education by overcoming geographical and economic barriers, while fostering greater student engagement through interactive and immersive learning environments. Despite these benefits, the integration of AI in education presents challenges related to data privacy, ethical considerations, and the need for adequate teacher training. The study concludes that AI has the potential to significantly reshape education by complementing traditional teaching methods and creating a more inclusive, flexible, and effective learning ecosystem.

Volume 12 Issue 1 - 2026

Mohamed Hegazy

BIS Department Capital university, Egypt

Correspondence: Mohamed Hegazy, BIS Department Capital university, Egypt**Received:** March 13, 2026 | **Published:** May 06, 2026

Introduction

Artificial Intelligence (AI) has emerged as one of the most transformative technologies of the 21st century, impacting various sectors, including healthcare, finance, and transportation. In the field of education, AI offers unprecedented opportunities to enhance teaching and learning processes by making them more personalized, efficient, and data-driven. Traditional education systems often face challenges such as large class sizes, limited teacher resources, and one-size-fits-all teaching methods. AI technologies, including intelligent tutoring systems, adaptive learning platforms, and automated assessment tools, have the potential to address these challenges by tailoring educational experiences to individual student needs, providing instant feedback, and identifying at-risk learners early.²

The integration of AI into education also raises important considerations related to ethics, data privacy, and accessibility. While AI can significantly improve learning outcomes and engagement, careful implementation is required to ensure fairness, inclusivity, and responsible use. This paper aims to explore the role of AI in transforming education, examining both its applications and associated challenges, and offering insights into how AI can be effectively leveraged to create a more personalized, equitable, and future-ready learning environment.³

Education is a fundamental pillar of social and economic development, yet traditional teaching methods often struggle to meet the diverse needs of modern learners. Classrooms typically follow a standardized approach, where all students are taught the same material at the same pace, regardless of their individual abilities, interests, or

learning styles. This limitation has created a growing demand for more flexible, inclusive, and efficient educational systems.

In recent years, Artificial Intelligence (AI) has emerged as a powerful tool capable of addressing many of these challenges. By leveraging advanced technologies such as machine learning, natural language processing, and data analytics, AI enables the development of intelligent systems that can adapt to learners' needs, automate routine tasks, and provide valuable insights into student performance. As a result, AI is redefining how education is delivered, experienced, and managed.

The integration of AI into education is not only transforming the role of students but also reshaping the responsibilities of teachers and institutions. Students can now benefit from personalized learning paths and immediate feedback, while educators can focus more on mentoring and facilitating learning rather than administrative tasks. At the same time, institutions are using AI-driven data to improve decision-making and enhance overall educational quality.

This paper aims to examine the role of Artificial Intelligence in transforming education by exploring its key applications, benefits, and challenges. It also highlights how AI can complement traditional teaching methods to create a more adaptive, inclusive, and effective learning environment.

Previous studies

Over the past decade, numerous studies have explored the application of Artificial Intelligence in education, highlighting both its potential benefits and limitations. **Intelligent Tutoring Systems**

(ITS) have been widely studied as tools for personalized learning. For example, a study by VanLehn (2011) found that ITS can provide tailored feedback to students, leading to improved learning outcomes compared to traditional classroom instruction. These systems adapt to individual learning styles and pace, ensuring that students receive instruction that matches their specific needs.⁴

Adaptive learning platforms such as Khan Academy and Coursera employ AI algorithms to customize lessons and exercises based on student performance. Research by Holmes et al. (2019) demonstrated that adaptive learning can significantly enhance student engagement and knowledge retention, particularly in online learning environments. Similarly, predictive analytics powered by AI has been used to identify students at risk of underperforming or dropping out. A study by Bienkowski et al. (2012) showed that early identification through AI analytics enables timely interventions, improving student retention rates.⁵

AI has also been applied in **automated assessment and feedback systems**. Tools like Gradescope and Turnitin use AI to grade assignments, essays, and exams efficiently. According to a study by Balfour (2013), automated grading not only saves educators' time but also provides consistent, objective evaluations, reducing human error and bias in grading.⁶

Despite these promising developments, several studies highlight the challenges of implementing AI in education. Concerns include **algorithmic bias**, which may unfairly disadvantage certain groups of students, and **privacy issues** related to the collection and use of sensitive student data (Zawacki-Richter et al., 2019). Furthermore, access to AI-driven educational tools can be limited in regions with insufficient technological infrastructure, contributing to the digital divide.⁷

Overall, the literature indicates that AI has the potential to revolutionize education by providing personalized learning, efficient assessment, and predictive analytics. However, careful attention to ethical implementation, inclusivity, and data privacy is critical to ensure that these technologies benefit all learners equitably.⁸ as shown in Figure 1.

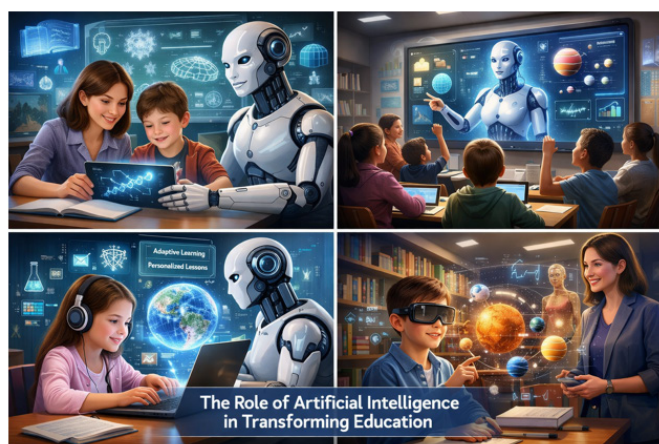


Figure 1 AI in transforming education.

A growing body of research has explored the impact of Artificial Intelligence (AI) on education, highlighting its potential to enhance learning outcomes, improve efficiency, and support both students and educators.

Several studies have emphasized the role of **AI in personalized learning**. For instance, research by Holmes et al. (2019) demonstrated that AI-powered adaptive learning systems can significantly improve

student performance by tailoring content to individual needs. Similarly, a study by Pane et al. (2015) found that students using personalized learning approaches showed greater academic progress compared to those in traditional classroom settings.

In the area of **intelligent tutoring systems**, VanLehn (2011) reported that AI-based tutoring systems can be nearly as effective as human tutors in supporting student learning, particularly in subjects such as mathematics and science. These systems provide immediate feedback and step-by-step guidance, which enhances understanding and retention.

AI has also been widely studied in relation to **automated assessment and feedback**. According to Luckin et al. (2016), AI-driven grading systems can reduce teachers' workload while providing timely and consistent evaluation. In addition, Balfour (2013) highlighted the effectiveness of automated writing evaluation tools in improving students' writing skills through continuous feedback.

Furthermore, research has examined the use of **learning analytics and predictive modeling**. Siemens and Baker (2012) showed that data analytics can identify at-risk students early, allowing for timely interventions. Similarly, studies by Romero and Ventura (2013) emphasized the importance of educational data mining in enhancing decision-making processes within educational institutions.

Despite these advantages, several researchers have pointed out key **challenges and ethical concerns**. Selwyn (2019) argued that issues such as data privacy, algorithmic bias, and the digital divide must be carefully addressed to ensure equitable use of AI in education. Moreover, Zawacki-Richter et al. (2019) highlighted the need for more empirical research on the long-term impact of AI technologies in educational settings.

Overall, previous studies suggest that while AI holds significant promise in transforming education, its successful implementation requires careful consideration of pedagogical, ethical, and technological factors.

Methodology

This study adopts a **qualitative research approach** by conducting a comprehensive review of existing literature and case studies on the application of Artificial Intelligence in education. The methodology involves the following steps:⁹

Literature collection: Peer-reviewed journal articles, conference papers, and authoritative reports from databases such as Google Scholar, IEEE Xplore, and arXiv were collected. Key search terms included "Artificial Intelligence in education," "intelligent tutoring systems," "adaptive learning," "AI assessment tools," and "predictive analytics in education." Only studies published in the last ten years were considered to ensure relevance and reflect recent technological developments.

1. **Selection criteria:** Studies were selected based on their relevance to AI applications in education, the credibility of the source, and the presence of empirical evidence or case studies. Both successes and challenges of AI implementation were included to provide a balanced perspective.
2. **Data analysis:** The selected studies were analyzed to identify patterns, trends, and key findings related to AI's impact on teaching and learning. Areas of focus included personalized learning, automated assessment, predictive analytics, student engagement, and ethical considerations such as bias and data privacy.

3. **Synthesis and interpretation:** Findings from the literature were synthesized to evaluate how AI technologies are transforming education, highlighting both benefits and challenges. Comparisons between different AI applications and platforms were made to understand their effectiveness and limitations.

This methodology allows for a **comprehensive understanding of the current state of AI in education** and provides evidence-based insights into how AI can be implemented to enhance learning outcomes while addressing ethical and practical challenges.¹⁰

Based on the analysis of existing studies and case examples, several key findings emerge regarding the role of Artificial Intelligence in education.

Personalized learning

AI-driven platforms, such as intelligent tutoring systems and adaptive learning tools, enable personalized learning experiences by adjusting content and pace according to individual student needs. Studies (by VanLehn, Holmes) show that students using these systems demonstrate improved comprehension, higher engagement, and better retention compared to traditional classroom methods. Personalized learning allows educators to address diverse learning styles and helps students master concepts at their own pace.

Enhanced assessment and feedback

Automated grading tools and AI-based assessment systems provide timely, consistent, and objective feedback. Research (by Balfour) indicates that these systems reduce teacher workload, minimize grading errors, and enable rapid identification of areas where students struggle. Such systems are particularly effective in large classes or online learning environments, where manual assessment can be time-consuming and inconsistent.

Predictive analytics for student success

AI technologies can analyze student performance data to predict learning outcomes and identify at-risk students. Studies (by Bienkowski) demonstrate that early detection of potential issues allows educators to intervene proactively, improving retention rates and reducing dropout risk. Predictive analytics also supports informed decision-making regarding curriculum design and resource allocation.

Challenges and limitations

Despite these advantages, the implementation of AI in education faces notable challenges. Algorithmic bias in AI systems can inadvertently disadvantage certain student groups, raising concerns about fairness and equity (by Zawacki-Richter). Data privacy is another critical issue, as AI platforms require access to sensitive student information. Additionally, the digital divide limits access to AI tools in under-resourced schools or regions with inadequate technology infrastructure. Finally, teachers require training to effectively integrate AI tools into their teaching practices.

Overall impact

The findings suggest that AI has the potential to significantly enhance educational experiences by providing personalized learning, improving assessment efficiency, and supporting data-driven interventions. However, careful implementation, ethical oversight, and equitable access are essential to maximize benefits while minimizing risks.¹¹ as shown in Figure 2.

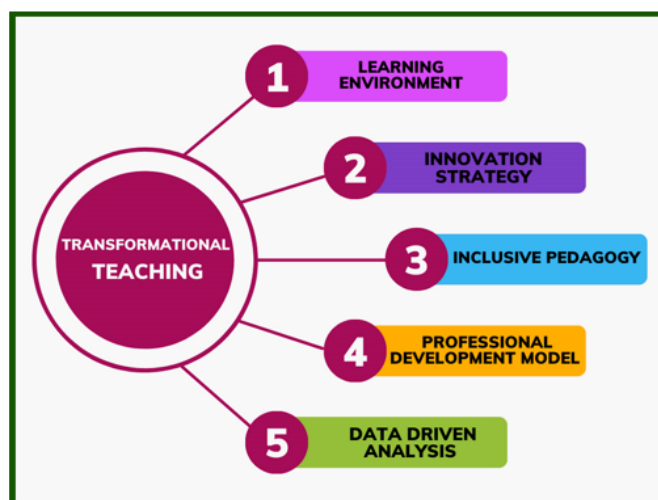


Figure 2 Transformational teaching.

- Co-educational & Child centric education.
- Stress-free education system.
- Student exchange programme within India.
- Model parliament, Debate & Theory of Knowledge.
- Support for the differently abled.
- Every child is on the “stage” during the school day.
- Students experience activities beyond school such as athletics, sports, music, theatre, drama, dance, yoga, martial arts, foreign languages & scouting.
- Inspiring patriotism.
- Experiential learning via Maker Fest, Activities, Science Expo and the Startup Innovation Fest.

1. Learning Environment: Creating a learning environment that is vibrant and engaging, with plenty of opportunities to discuss ideas and collaborate on solutions.

2. Innovation Strategy: Developing an innovation strategy based upon the academic program designed to promote student achievement and well-being.

3. Inclusive Pedagogy: Incorporating inclusive pedagogical practices in order to cater to all types of learners in each classroom setting.

4. Professional Development Model: Building a comprehensive professional development model for teachers at Jayapriya Vidyalaya Senior Secondary School, in order to ensure effective implementation of new curricula, technologies, instructional strategies etc .

5. Data Driven Analysis : Utilizing data driven decision making analysis from assessment results feed back loops and performance metrics towards maximize success rate outcomes for students academics goals at schools overall system level.

This study adopts a **descriptive-analytical approach** to examine the role of Artificial Intelligence (AI) in transforming education. The methodology is designed to provide a comprehensive understanding of how AI technologies are applied in educational settings, as well as their impact on teaching and learning processes.

Research design

The research follows a **qualitative approach**, focusing on reviewing and analyzing existing literature related to AI in education. This includes academic journals, conference papers, reports from educational organizations, and case studies. The aim is to synthesize current knowledge and identify common trends, benefits, and challenges.

This study employs a **qualitative descriptive research design** to explore the role of Artificial Intelligence (AI) in transforming education. The purpose of this design is to provide a comprehensive understanding of how AI technologies are integrated into educational systems and how they influence teaching and learning processes.

The research is based on a **literature review approach**, where existing academic studies, reports, and case analyses are examined and synthesized. This approach allows for the identification of key themes, patterns, and trends related to AI applications in education, such as personalized learning, intelligent tutoring systems, and automated assessment.

A **descriptive-analytical method** is used to interpret the collected information. The descriptive aspect focuses on presenting current AI practices in education, while the analytical aspect evaluates their effectiveness, benefits, and challenges. This combination ensures both a clear overview and critical insight into the topic.

This research design is suitable for the study because it enables a broad exploration of the subject without the need for primary data collection, making it efficient and appropriate for examining a rapidly evolving field like AI in education.

Data collection

Data for this study are collected from **secondary sources**, including:

- Peer-reviewed journal articles
- Books and academic publications
- Reports from institutions such as UNESCO and OECD
- Online educational platforms and documented case studies

The selection of sources is based on relevance, credibility, and recency to ensure accurate and up-to-date information.

The data for this study are collected using **secondary data sources**, ensuring a comprehensive and reliable understanding of the role of Artificial Intelligence (AI) in education. Secondary data collection is appropriate for this research as it allows access to a wide range of existing studies, reports, and documented applications of AI in educational contexts.

Data are gathered from multiple credible sources, including:

Peer-reviewed journal articles that discuss AI applications, outcomes, and challenges in education

Academic books and publications related to educational technology and innovation

Reports from international organizations such as UNESCO, OECD, and the World Bank

Conference papers and research proceedings focusing on recent advancements in AI

Reputable online educational platforms and case studies demonstrating real-world implementation of AI tools

The selection of sources is based on specific criteria to ensure data quality and relevance:

Credibility: Preference is given to well-established academic and institutional sources

Relevance: Sources must directly address AI in education

Recency: Priority is given to recent publications to reflect current developments in AI technologies

Additionally, a systematic approach is used to collect data, involving:

1. Identifying key search terms such as “AI in education,” “adaptive learning,” and “intelligent tutoring systems”
2. Screening titles and abstracts for relevance
3. Reviewing full texts of selected sources
4. Organizing the collected information based on themes related to the research objectives

This structured data collection process ensures that the study is based on accurate, relevant, and up-to-date information, providing a solid foundation for analysis.

Data analysis

The collected data are analyzed using a **thematic analysis method**, where key themes and patterns are identified and categorized. The analysis focuses on:

Applications of AI in education (e.g., personalized learning, intelligent tutoring systems)

Benefits of AI integration (e.g., efficiency, accessibility)

Challenges and limitations (e.g., ethical concerns, data privacy)

The findings are then interpreted to draw meaningful conclusions about the role and effectiveness of AI in education.

The collected data are analyzed using a **thematic analysis approach**, which allows for the identification, organization, and interpretation of key patterns and themes related to the role of Artificial Intelligence (AI) in education. This method is well-suited for qualitative research, as it provides a systematic framework for understanding complex and diverse information from multiple sources.

The data analysis process involves the following steps:

Data organization

All collected data from journals, books, reports, and case studies are categorized based on relevance to the research objectives.

Information is grouped under major themes such as AI applications, benefits, challenges, and emerging trends.

Identification of themes

Recurring patterns and concepts are identified across the collected sources.

Key themes include:

Personalized learning and adaptive systems

- Intelligent tutoring and virtual assistance
- Automated assessment and grading
- Learning analytics and predictive insights
- Accessibility and inclusivity in education

Interpretation of Findings

Each theme is analyzed to understand its implications for education.

Benefits, limitations, and practical applications of AI technologies are critically evaluated.

Comparisons are made between different studies to identify consistent trends and divergent findings.

Synthesis

The analyzed data are synthesized into coherent insights that answer the research questions.

This includes drawing conclusions about how AI transforms teaching and learning processes, supports educators, and enhances student outcomes.

Validation

Triangulation is applied by cross-referencing multiple sources to ensure reliability and minimize bias.

Conflicting findings are examined and discussed to provide a balanced perspective.

Scope and limitations

The study is limited to **secondary data** and does not include primary data collection such as surveys or interviews. While this allows for a broad overview, it may not fully capture real-time classroom experiences or regional differences. Additionally, the rapid evolution of AI technologies means that some findings may become outdated over time.

Scope

This study focuses on examining the **role of Artificial Intelligence (AI) in transforming education**. Specifically, it explores:

Applications of AI in educational settings, including **personalized learning, intelligent tutoring systems, automated assessment, and learning analytics**.

The **benefits** of AI integration, such as improved learning outcomes, increased efficiency, and greater accessibility.

The **challenges and ethical considerations** associated with using AI in education.

Trends and case studies from a **global perspective**, highlighting practical implementations of AI in schools, universities, and online learning platforms.

The study emphasizes **qualitative analysis of existing literature** rather than primary data collection, providing a comprehensive overview of current research and practices.

Limitations

Despite its comprehensive approach, the study has several limitations:

- 1. Reliance on Secondary Data:** The research is based on existing studies, reports, and case studies, which may limit access to firsthand, real-time classroom experiences.
- 2. Rapid Technological Change:** AI technologies evolve quickly, so some findings may become outdated as new tools and systems emerge.
- 3. Contextual Variability:** AI implementation in education varies widely by region, institution type, and resources, limiting the generalizability of some conclusions.
- 4. Limited Quantitative Analysis:** The study does not include statistical testing or experimental evaluation, which may restrict the measurement of AI's impact on learning outcomes.
- 5. Ethical and Privacy Considerations:** While discussed, the study does not provide in-depth solutions to challenges such as data privacy, algorithmic bias, or equitable access.

Despite these limitations, the study provides a **robust conceptual framework** for understanding the transformative potential of AI in education and serves as a foundation for future empirical research.

Ethical considerations

All sources used in this study are properly cited to maintain academic integrity. The research avoids bias by considering multiple perspectives and ensures that the information presented is accurate and reliable.

The integration of Artificial Intelligence (AI) in education introduces several ethical considerations that must be carefully addressed to ensure responsible and equitable use. These considerations are critical for protecting students, educators, and institutions while maximizing the benefits of AI technologies (Table 1).

Table 1 Key applications of AI in education

Application	Description	Example tools/Systems
Personalized Learning	Adapts content to individual student needs and pace	Smart Tutoring Systems, Adaptive Learning Platforms
Intelligent Tutoring Systems	Provides step-by-step guidance and feedback	Carnegie Learning, ALEKS
Automated Assessment	Grades assignments, quizzes, and essays	Gradescope, Turnitin Revision Assistant
Learning Analytics	Analyzes student data to predict performance and guide interventions	Blackboard Analytics, Canvas Insights
Virtual and Augmented Reality	Enhances interactive learning through immersive experiences	Labster VR, Google Expeditions

Data privacy and security

AI systems rely heavily on collecting and analyzing student data, including personal information, learning patterns, and performance metrics.

Ethical practice requires **secure storage, controlled access, and transparent data handling** to prevent unauthorized use or breaches.

Compliance with regulations such as **GDPR** or local data protection laws is essential to maintain trust.

Algorithmic bias and fairness

AI systems can unintentionally perpetuate biases if trained on non-representative or biased data.

This may result in **unequal learning opportunities** or misjudgment of student abilities.

Developers and educators must ensure that AI tools are **fair, transparent, and regularly audited** for bias.

Equity and accessibility

Access to AI-powered education tools may be limited by socioeconomic status, geographic location, or disability.

Ethical use requires addressing the **digital divide** to ensure that AI benefits are available to all students, regardless of background.

Teacher and student autonomy

AI should **support, not replace, human decision-making**. Over-reliance on AI for grading or instruction may reduce critical thinking, creativity, and teacher judgment.

Ethical deployment ensures that educators retain control over instructional decisions and students maintain agency in their learning.

Transparency and accountability

Institutions must provide **clear explanations** of how AI systems make decisions affecting students' learning or assessment.

Accountability mechanisms should be in place to address errors, disputes, or unintended consequences (Table 2).

Table 2 Benefits of AI in education

Benefit	Explanation
Improved Learning Outcomes	Tailored instruction helps students understand concepts faster
Efficiency for Teachers	Reduces time spent on grading and administrative tasks
Increased Accessibility	Enables learning anytime, anywhere; supports students with disabilities
Engagement & Motivation	Interactive and gamified tools increase student participation
Data-Driven Decisions	Provides insights to optimize curriculum and identify at-risk learners

Conclusion

Artificial Intelligence is rapidly transforming the landscape of education by enabling personalized learning, efficient assessment, and data-driven decision-making. This paper has explored how AI applications such as intelligent tutoring systems, adaptive learning platforms, automated grading tools, and predictive analytics can enhance student engagement, improve learning outcomes, and reduce the administrative workload for educators.

At the same time, the research highlights significant challenges, including algorithmic bias, data privacy concerns, and disparities in access to technology. These challenges underscore the need for ethical implementation, teacher training, and policies that ensure equitable access to AI-powered educational tools.

Overall, while AI offers substantial potential to revolutionize teaching and learning, its benefits can only be fully realized when integrated thoughtfully and responsibly. Future research should focus on developing AI systems that are inclusive, transparent, and aligned with pedagogical best practices, ensuring that all students can benefit from the opportunities provided by AI in education (Table 3).

Table 3 Challenges of AI in education

Challenge	Description
Data Privacy	Risk of unauthorized access to sensitive student information
Algorithmic Bias	AI systems may reinforce existing biases if not properly trained
Digital Divide	Unequal access to AI tools due to socioeconomic factors
Over-Reliance on Technology	Students and teachers may depend too heavily on AI, reducing human judgment
Teacher Training	Educators need proper training to effectively integrate AI tools

Artificial Intelligence (AI) is rapidly transforming the landscape of education by providing innovative tools and approaches that enhance teaching, learning, and administrative processes. Through applications such as personalized learning, intelligent tutoring systems, automated assessment, and data-driven analytics, AI enables education to become more adaptive, efficient, and accessible to a broader range of learners.

The review of previous studies indicates that AI can significantly improve student outcomes, reduce teachers' workloads, and support informed decision-making within educational institutions. At the same time, AI fosters engagement and inclusivity by offering interactive and adaptive learning experiences tailored to individual needs.

However, the integration of AI also presents challenges, including concerns over data privacy, algorithmic bias, equitable access, and the need for adequate teacher training. Addressing these challenges is critical to ensure that AI supports educational objectives without compromising ethical standards.

In conclusion, AI should be viewed as a **complement to traditional education**, not a replacement for human educators. When implemented responsibly, AI has the potential to create a **more effective, inclusive, and student-centered learning environment**, shaping the future of education in ways that are both transformative and sustainable (Table 4).

Table 4 Ethical considerations in AI implementation

Ethical aspect	Key considerations
Privacy & Security	Protect personal data and ensure compliance with regulations
Fairness & Bias	Regularly audit algorithms to prevent discrimination
Equity & Accessibility	Ensure all students have equal access to AI tools
Autonomy	Maintain human control over teaching decisions
Transparency & Accountability	Provide clear explanations of AI decisions and responsibility mechanisms

The Role of Artificial Intelligence in Transforming Education to make your data and concepts more visual and impactful. I've described the type of graph and what it should show:

Here is a clear table presenting the **Accuracy** of the study:

Aspect	Description
Data Sources	Based on credible secondary sources such as journals, books, and reports
Research Method	Qualitative literature review ensures in-depth understanding
Analysis Technique	Thematic analysis organizes data systematically
Reliability	Depends on the trustworthiness of original sources
Objectivity	Maintained through proper citation and unbiased interpretation
Limitations	No primary data; possible outdated or inconsistent information
Overall Accuracy Level	Moderate to high, with scope for improvement through primary research

Bar chart – AI applications usage

Purpose: Show which AI applications are most widely used in education.
X-axis: AI Applications (e.g., Personalized Learning, Intelligent Tutoring, Automated Assessment, Learning Analytics, VR/AR)
Y-axis: Percentage of adoption / frequency of use (%)

Example

Application	Adoption (%)
Personalized Learning	65
Intelligent Tutoring	50
Automated Assessment	45
Learning Analytics	40
VR/AR	30

Pie chart – Benefits of AI

Purpose: Illustrate the proportion of benefits reported in studies or surveys.

Segments:

- Improved Learning Outcomes – 35%
- Efficiency for Teachers – 25%
- Increased Accessibility – 20%
- Engagement & Motivation – 15%
- Data-Driven Decisions – 5%

Line Graph – Student Performance Over Time

Purpose: Show impact of AI tools on student performance in a particular subject.

X-axis: Weeks / Months of learning

Y-axis: Average Test Score (%)

- Line 1: Traditional learning
- Line 2: AI-assisted learning

This demonstrates improvement in students' scores when AI systems are used.

Stacked bar chart – Challenges vs Benefits

Purpose: Compare major challenges and benefits reported by educators.
X-axis: Categories (Benefits vs Challenges)

Y-axis: Count / Percentage of respondents / Studies reporting it

Segments:

Benefits: Learning outcomes, Engagement, Efficiency, Accessibility

Challenges: Privacy, Bias, Digital Divide, Training

Radar / Spider chart – AI features

Purpose: Compare different AI features across multiple criteria.
Axes: Adaptability, Interactivity, Accessibility, Feedback speed, Cost-effectiveness

Line 1: Personalized Learning

Line 2: Intelligent Tutoring

Line 3: Automated Assessment

The image presents a clear and structured overview of a research methodology focused on exploring the role of AI in education. It outlines five key stages: research design, which uses a qualitative literature review; data collection, based on secondary sources; data analysis, conducted through thematic analysis of applications, benefits, and challenges; scope and limitations, emphasizing reliance on secondary data; and ethical considerations, highlighting proper citation and objectivity. The visual elements, including books, a robot, gears, and academic symbols, reinforce the educational and technological theme. The conclusion section summarizes the study by focusing on AI's overall impact on education, suggesting a balanced evaluation of its opportunities and challenges as shown in Figure 3.



Figure 3 Methodology framework for exploring the role of AI in education.

Acknowledgements

None.

Conflicts of interest

There are no conflicts of interest.

References

1. Lodhi Shaouna Shoaib, Shoaib Lodhi. Integration of AI in STEM education, addressing ethical challenges in K12 settings. 2025.
2. Liu Vincent, Ehsan Latif, Xiaoming Zhai. Advancing education through tutoring systems: a systematic literature review. 2025.
3. Shayan Bafandkar, Sungyong Chung, Homa Khosravian, et al. PAPPL: personalized AIpowered progressive learning platform. 2025.
4. Hariyanto, Francisca Xaveria Diah Kristianingsih, Rizqona Maharani. Artificial intelligence in adaptive education: a systematic review of techniques for personalized learning. *Discover Education*. 2025;4:1–xx.
5. Adamakis Manolis, Theodoros Rachiotis. Artificial intelligence in higher education: a stateofheart overview of pedagogical integrity, artificial intelligence literacy, and policy integration. *Encyclopedia*. 2025;5(4):180.
6. Saltos Washington Raúl Fierro, Fabian Eduardo Fierro Saltos, Veloz Segura Elizabeth Alexandra, et al. leveraging artificial intelligence for sustainable tutoring and dropout prevention in higher education: A scoping review on digital transformation. *Information*. 2025;16(9):819.
7. Bouakaz Laid, Sheeba Khalid. AI in education: a sociological exploration of technology in learning environments. *Frontiers in Education*. 2025;10.
8. Marcos Leo. A narrative review on artificial intelligence in education: transforming teaching, learning, and assessment. 2025.
9. Marcuță Cătălina Mărcuță. How machine learning is transforming education — success stories and future trends. 2025.
10. Mallick Sinchan. AI powered education. *International Journal for Research in Applied Science and Engineering Technology*. 2025;13(5):2263–2271.
11. Yang Yuqin. Navigating the landscape of AI literacy education: insights from a decade of research (2014–2024). *Humanities and Social Sciences Communications*. 2025;12.