

Studies on stages of somatic embryogenesis in *Nothapodytes nimmoniana* and its quantitative evaluation of camptothecin content

Abstract

Nothapodytes nimmoniana J. Graham is an endangered medicinal plant species found in Western Ghats of Maharashtra, supposed to be the natural source of Camptothecin (CPT) an anticancer drug. Due to high utilization and export without giving many efforts on its conservation along with constraints of low seed germination, plant is said to be near to extinct. Thus Somatic embryogenesis is one of the methods to grow such plants in lab to field conditions. Somatic embryo formation will provide the information about the development and germination events and also aid in propagation of this species. Somatic embryogenesis was induced by leaf explants TDZ (*Thidiazuron*) plant hormone in various concentrations. But it was seen that TDZ (1mg/L) in Murashige and Skoog Basal salt media shows faster and better somatic embryogenesis as compare to other concentrations used with average induction of 60%. In histological examination of somatic embryos of *N. nimmoniana* various stages of somatic embryos were seen including globular, post globular, heart shape, torpedo shape etc. The HPLC analysis confirms the presence of CPT in *in vitro* regenerated somatic embryos which were found to be 1.74058±0.08064 µg/g.

Keywords: *Nothapodytes nimmoniana* J graham, TDZ, somatic embryogenesis, camptothecin, histology, HPLC

Volume 3 Issue 1 - 2019

Anita Surendra Patil,¹ Ankit Subhash Kale,¹ Surendra Rajaram Patil²

¹Plant Secondary Metabolite Lab, Department of Biotechnology, Sant Gadge Baba Amravati University, India

²College of Horticulture, Dr. Panjabrao Deshmukh Agricultural University, India

Correspondence: Anita Surendra Patil, Plant Secondary Metabolite Lab, Department of Biotechnology, Sant Gadge Baba Amravati University, Amravati 444602 (M.S) India, Tel 91-9881735354 Email anitapatil@sgbau.ac.in

Received: January 31, 2018 | **Published:** January 11, 2019

Abbreviations: mg/L, milligram/Liter; %, percentage; SE, somatic embryo; TDZ, thidiazuran; MS, murashige and skoog; HPLC, high performance liquid chromatography; µg/g, microgram/gram; camptothecin, CPT

Introduction

Nothapodytes nimmoniana Graham is an endangered plant species belongs to Icacinaceae family, which was reported to be widely grown in Western Ghats and North-east and is distributed in patches in India.^{1,2} The plant was confirmed to be chief source of Camptothecin (CPT),³ located in CPT, useful in cancer treatment.⁴ CPT has significant antitumor activity in mammalian cancer, AIDS chemotherapy, lung, breast and uterine cervical cancer.⁵⁻⁸ In last few years due to large scale cutting and illegal export plant material without giving much concern on its conservation has brought these plant under endangered category.^{9,10} Thus to meet the pharmaceutical demand and conservation view, micro propagation via leaf and stem of this plant has been reported,^{11,12} which seems to be positive approach for the conservation of this plant. As compare to Plant tissue culture, early seedling growth and seed germination process in *N. nimmoniana* is very slow because of seed dormancy.¹³ Gibberellic acid (GA₃) treatment to seeds of *N. nimmoniana* increases in seed germination percentage.¹⁴

There are several reports about the potential of somatic embryogenesis in formation of new plantlets.^{12,15} Somatic embryogenesis has several advantages, including the efficiency formation of plantlets in few steps, reduction in labour, time and cost.¹³ The aim of this proposed work is to develop a protocol for induction of direct somatic embryogenesis for conservation and for deriving plant material for *in vitro* production systems. To best of our knowledge there are fewer reports to form somatic embryos in *Nothapodytes nimmoniana*.¹² Thus, the study has been focused on the sequences of events microscopically and visually, which leads to

somatic embryogenesis by using TDZ in tissue culture media directly from leaf explants and the validation of presence of CPT in them. In current research we are also looking for the occurrence of CPT quantitatively in the leaf generated somatic embryos.

Materials and methods

In vitro somatic embryogenesis and histology

Plant materials

The seeds of *N. nimmoniana* were collected from place Chiplun from Western Ghats of Maharashtra India and are germinated according to our method.¹⁴ Fresh leaves were used for the plant tissue culture study. The leaves were washed under with tap water, and kept in 0.5% Bavistien for 2 minutes. These leaves were washed with laboline solution for 5 minutes followed by tap water and distilled water wash to remove soil, microbes and other external agent which interfere in tissue culture. The leaf explants were surface sterilized by 70% ethanol for 30 seconds which was followed by rinsing with sterile distilled water. In the next step explants leaves were treated kept in 0.2% HgCl₂ solution for 1.0 to 1.5 min, which was again washed with sterile distilled water. The surface sterilized explants were cut into 1 cm×1.5 cm size and blotted onto filter paper folds.

Induction of somatic embryos from leaf explants

The surface sterilized leaf explants were used for inoculation on Murashige and Skoog (MS) medium. The MS basal medium was used for the somatic embryogenesis study, maintained at 5.8 pH by 1M NaOH or 1M HCl. The medium was supplemented with different six concentrations of TDZ (0.5, 1.0, 1.5, 2.0, 2.5 and 3.0 mg/L). The solidifying agent Clerigel (0.3%) was added in medium and the medium was autoclaved at 121°C at 15 lbs for 15 min. The tubes were allowed to solidify and checked for contaminations for 4 days. The experimental set I, II, III, IV, V and VI were inoculated with 0.5x1.0 cm sterilized leaf explants. The inoculated explants were maintained at 26°C temperature, white fluorescent light (1000 lux)

for 12 h/day, with relative humidity of 40% in plant growth chamber (Remi). The inoculated tubes were kept under observation and after 25 days of inoculation the induction of somatic embryos from explants were recorded. The data at the end was statistically analyzed. To evaluate the embryogenic potential of the induced somatic embryoids was subcultures onto fresh medium corresponding to identical set. The medium was prepared as described above and cultures were maintained under the same conditions used for induction. The number of explants with embryogenic response and number of embryos per explants was recorded after 40 days of incubation. Occasionally, some explants tended to turn brown and had to be transferred to a fresh medium again. Few explants transformed and regenerated into white callus and maximally explants enlarged their size turn into full-grown somatic embryos.

Effects of TDZ on frequency of embryogenic response

For this experiment the leaf explant of *N. nimmoniana* plant was used and inoculated on the MS basal salt medium containing TDZ plant growth hormone ranging from 0.5-3.0 mg/L (0.5, 1.0, 1.5, 2.0, 2.5 and 3.0 mg/L). Twenty explants were inoculated in tubes for each concentration of TDZ. The explants with the positive embryonic response were inoculated in fresh media with their respective concentrations. The cultures were maintained under the same conditions used for determination of embryogenic callus frequency. The percentage of explants with well-developed somatic embryos formation was assayed after 40 days.

Histomicroscopical study

Histological studies of the somatic embryos generated in different concentrations, was done at different time intervals of the study. For the histological studies, the longitudinal sections (10–15 µm thick) of explants possessing somatic embryos were taken and fixed on clean slide using in FAA (Formalin 5% (v/v): Acetic acid 5% (v/v): Ethanol 90% (v/v), dehydrated in ethanol series and embedded in paraffin wax. About 10-15 thin sections were cut and stained with (0.2%) safranin and observed under Carl Zeiss microscope. The histological analysis was performed to study developing stages of somatic embryos.

HPLC analysis of methanolic extract of Somatic embryo

Preparation of sample

Fresh somatic embryo of *N. nimmoniana* were crushed in the mortar pestle in HPLC grade methanol, taken in clean vials and percolated with 5 ml of methanol and vortexed for 2 minutes followed by sonication at 20 MHz at room temperature for 15min. The sonicated material was centrifuged and the supernatant was filtered by 0.25 micron filter and collected in another vial and further used for HPLC experimentation.

Preparation of calibration curve for Standard Camptothecin

Standard solutions of CPT in 20, 40, 60, 80 and 100 µg/mL were injected in HPLC column. The peaks were detected at 365 nm. Calibration curves of CPT were prepared by plotting peak area vs. concentration. The CPT concentration in various samples was obtained by plotting the values in standard calibration graph Figure 4.

HPLC analysis

The experimental sample solution somatic embryo for HPLC was filtered using 0.2 µm syringe filter before injection. The instrument

was purchased from Agilent Technologies (Model–1260 Infinity) and column used was ZORBAX Eclipse plus C-18 (4.6×100 mm, 3.5). Acetonitrile: Water (25:75) solvent system with flow rates 1ml/min was used. Detection of CPT was done at 365nm; elution gradient was isocratic elution with 10µl of sample. The flow rate was kept at 1.0 ml/min. DAD signal at 365 nm was kept for detection. Reference compound was commercially available CPT of Sigma Aldrich with concentration 1mg/ml.

Results

Somatic embryo formation by leaf explant

A very simple protocol was optimized for the direct somatic embryogenesis from the leaf explant of *N. nimmoniana*. The leaf explant was cultured on the MS basal medium containing various combinations of TDZ which is one of the most efficient cytokinins like growth hormone. After 25 days of inoculation of explant on tissue culture media, induction was seen on each set, but better embryogenic growth was seen on set I, III, IV and VI. The embryos were formed on the leaf epidermal surface (Figure 1) (Figure 2) and were clear visible. They show several developing stages with less morphological differences. Some embryos were seen alone whereas some were found together in series with less morphological difference. The young somatic embryos were subculture on their respective multiplication medium, for the conversion of embryogenic mass to embryonic development.

After 35-40 days these embryos were further developed, some embryos developed morphologically and some transformed into embryogenic callus (Table 1) (Table 2). It was found that the rate of embryogenic development is rapid in set I with 60.0 % response whereas Callus growth was faster in set IV with 70.0 % response as compare to other sets. After sub culturing the embryo converts whitish brown in color, which after further sub culturing converts into embryos with green color and giant shape. The histological studies of embryos were done after 60 days, up to which embryos were visibly green in color and circular in shape. In histological studies different stages of somatic embryos were seen under microscope, showing globular stage (early globular and post globular), shoot primordia, cotyledonary somatic embryos, apical meristem, torpido shape, Shoot buds and heart shaped.

Table 1 Effect of variable concentration of TDZ on induction of Somatic embryos using leaf explants from *N. nimmoniana*

Set	Concentrations of TDZ(in mg/L)	Explants inoculated	Induction in SE	% Response
I	0.5	20	12	60
II	1	20	8	40
III	1.5	20	8	40
IV	2	20	16	80
V	2.5	20	6	30
VI	3	20	12	60

HPLC Analysis

The actual amount of CPT present in the samples was confirmed by HPLC using the standard CPT graph (Figure 3) (Figure 4). The CPT content in the 100 mg/mL methanolic extracts of somatic embryo

was analysed and quantified by HPLC method. The chromatogram obtained shows homogenous peaks of CPT in standard and extract of somatic embryo with baseline separation at similar retention time 7.2 min. The exact retention time of test sample and standard CPT along with overlapping peaks confirms the presence of CPT in all samples (Figure 3). The estimation of CPT present in somatic embryo was performed on HPLC by preparing a calibration graph (Figure 4 Area v/s CPT amount in µg/mL) with Y-equation= $1.33513x+1.97716$ (error 0.00005). The amount of CPT present in test samples were calculated by putting the peak area value in automated generated calculator in the instrument. The results confirm that CPT extract of somatic embryo i.e. 1.74058 ± 0.08064 µg/g with peak area of 15359 on chromatogram.

Table 2 Response of Somatic embryos after subculture in their respective media and hormone concentration

Set	Concentrations of TDZ (in mg/L)	SE inoculated	Response of SE	% Response
I	0.5	10	6 Somatic embryo	60
II	1	10	2 Somatic embryo	20
III	1.5	10	1 callus	10
IV	2	10	7 Callus	70
V	2.5	10	4 Callus and 2 Somatic embryo	-
VI	3	10	3 Somatic embryo and 2 Callus	-

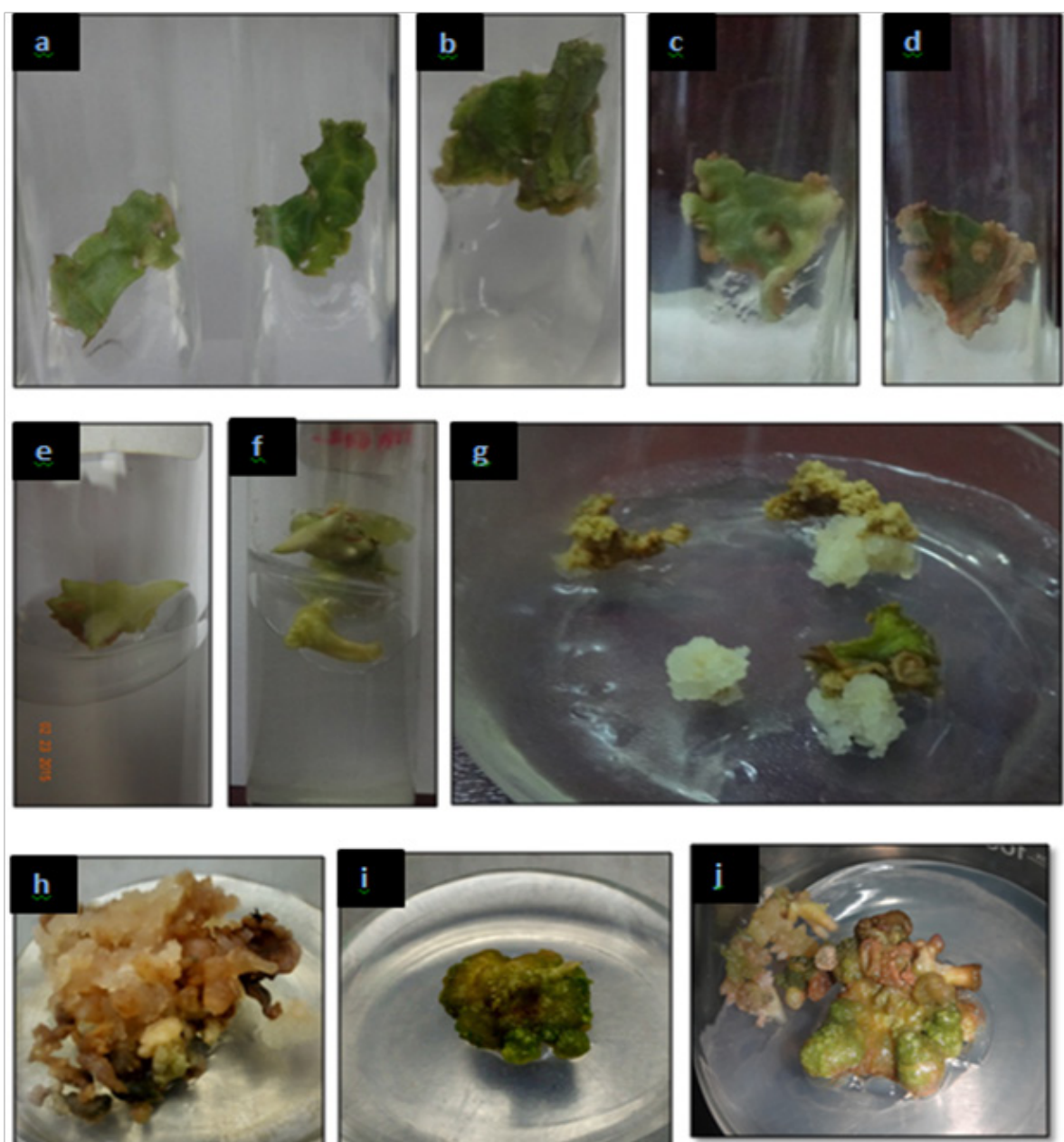


Figure 1 Different stages of somatic embryos development (a-j) in *N. nimmoniana* [Ia-c, Globular embryo stage, Ie-f, Leaf primordia; Ig-h, Callus formation from callus and Ii-j, Torpedo shape embryo and Shoot buds].

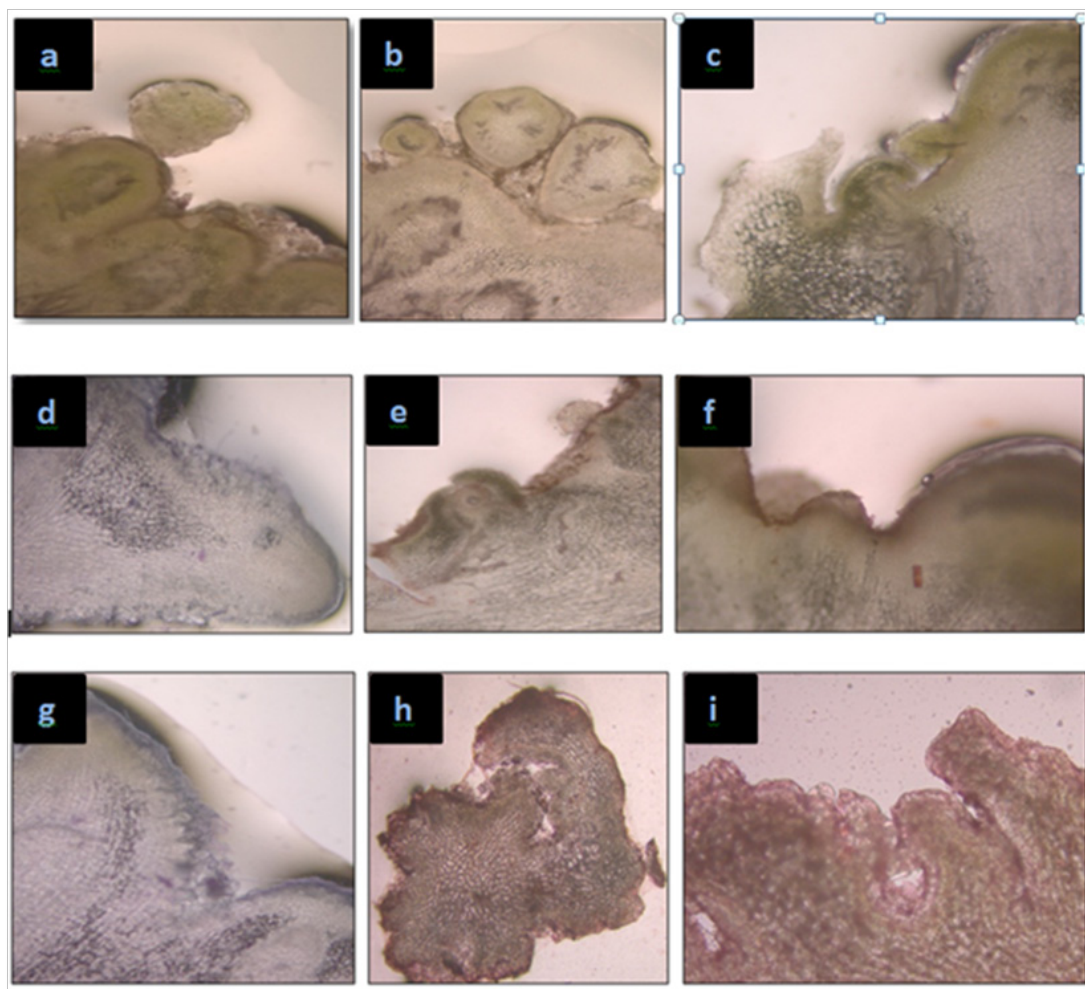


Figure 2 Microscopic study of different stages of somatic embryos development (a - i) in *N. nimmoniana* [GE , globular shape embryo, PGE, post globular shape embryo; S, suspensor; HE, heart shape embryo, SPM, shoot primordia, AM, apical meristem, CTD, cotyledonary shape embryo, TE, torpedo shape embryo and SB, shoot buds].

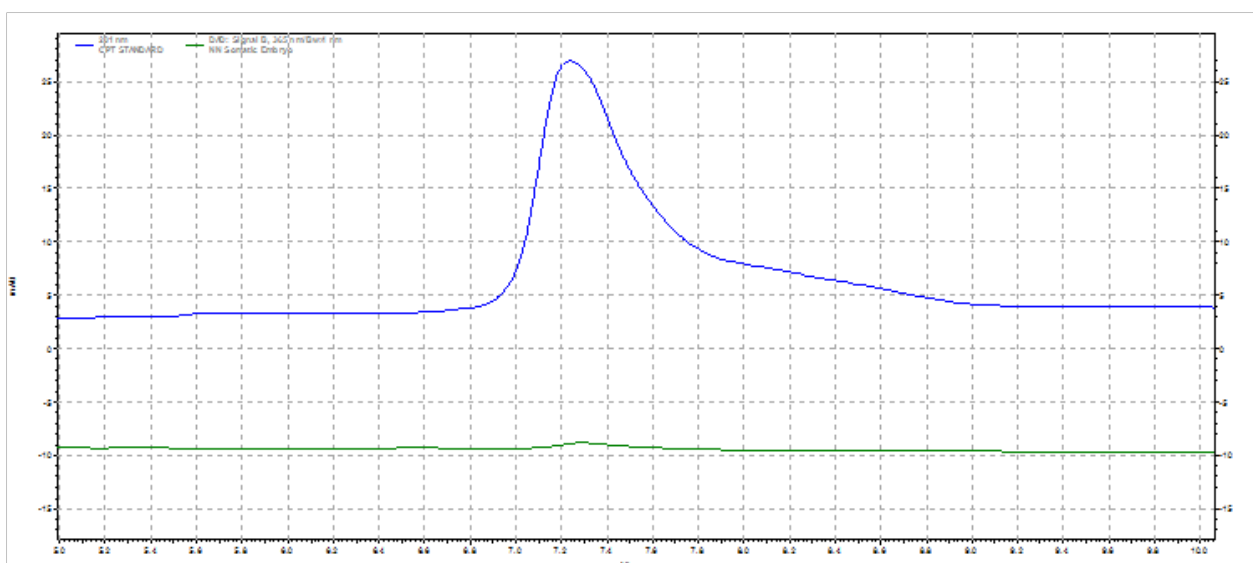


Figure 3 HPLC chromatogram of Standard CPT and methanolic extract of somatic embryo.

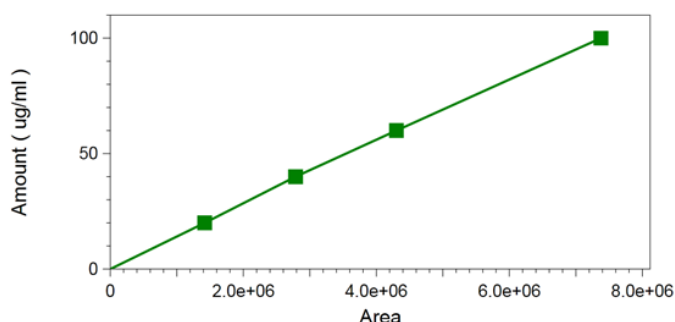


Figure 4 Calibration graph of CPT standard (20µg/mL to 100µg/mL) with Y-equation=1.33513x+1.97716 (error 0.00005).

Discussion

In vitro culture techniques have made possible to grow a rare and endangered plant in controlled conditions with the purpose of multiplication and conservations. In present study a protocol for direct somatic embryogenesis from the leaf explants of *N. nimmoniana* has been proposed, which seems to be quite beneficial for the multiplication of such endangered plant species. It has been reported that higher concentration of auxins is generally used for the somatic embryogenesis.¹⁶ Carrot cells shows the somatic embryogenesis in different stages in medium supplemented with 2, 4-D. But there is very less data available which explain the potential of somatic embryogenesis in multiplication of *N. nimmoniana*.¹² Direct somatic embryogenesis has several significance in bio reactor for scaling up and synthetic seeds formation,¹⁷ along with plants formation without loss of parental characters.¹⁸ Somatic embryogenesis is also useful in forest development and conservation concept including woody plants, which has saved many plant species.¹⁹⁻²¹ TDZ is one of the most important tools for the somatic embryogenesis in woody plants like *N. nimmoniana*.²²⁻²⁴ Some earlier reports are available on direct and indirect somatic embryogenesis in *N. foetida*.^{15,25,26}

TDZ has potential more than any other cytokinins in somatic embryo formation in *N. foetida* as it gives response in lower concentration as well.²⁷ In this study out of 6 concentration of TDZ used in MS basal medium, Set IV, with 2.0 mg/L was found best in terms of embryogenic response. Also at same concentration the brown embryos after subculture turned in to green colored large embryo further showed maximum somatic embryogenic percentage. The observation are in similar with earlier report of dual nature of TDZ in differentiation of somatic embryos in pigeon pea plant.²⁸ It has been also reported that TDZ promotes cell division and differentiation potential as well as induces embryogenic competence like cytokinins and auxins and shows better quality of shoot formation along with cytokinin like 6-Benzylaminopurine (BAP).²³ Table 2 suggests that with variability in concentration of TDZ, shown to produce callus, induce somatic embryos formation and in particular concentration induce both somatic embryos and callus. Such triple role of TDZ is reported in earlier report by Mundhara and Rahid,²⁹ thus the exact activity of TDZ is still topic of debate and thus more prominent study is essential on the role of TDZ. Padmanabha *et al.*¹ showed the general patterns of accumulation of CPT in *N. foetida* across individuals, plant parts, plant size and sex of plants, in the Western Ghats of India. CPT from *N. foetida* has been analyzed by HPLC, HPTLC, DESI-MS and 1H-NMR methods.³⁰⁻³² In present investigation, CPT was analyzed by the HPLC method proposed by Patil *et al.*³³ Among different Camptothecin producing plant species, *N. foetida* has the highest CPT

accumulation.³⁴ In our investigation, regenerated structure from leaf of *N. foetida* i.e. somatic embryo shows presence of CPT. The similar pattern variation in accumulation of CPT in different phenotypic variant has been shown by Patil *et al.*³⁵

Acknowledgments

None.

Conflicts of interest

The author declares there is no conflict of interest.

References

1. Padmanabha BV, Chandrashekar M, Ramesha BT, et al. Patterns of accumulation of camptothecin, an anti-cancer alkaloid in *Nothapodytes nimmoniana* Graham, in the Western Ghats, India: Implications for identifying high-yielding sources of the alkaloid. *Current Science*. 2006;90(1):95–100.
2. Sharma MV, Uma Shaanker R, Vasudeva R, et al. Functional dioecy in *Nothapodytes nimmoniana*, a distylous species in the Western Ghats. *Current Science*. 2010;99(10):1–6.
3. Fulzele DP, Satdive RK, Pol BB. Growth and production of Camptothecin by cell suspension cultures of *N. foetida*. *Planta Medica*. 2001;67(2):150–152.
4. FengXYY, Wang TY, Zhang YH, et al. Variation in Camptothecin content in *Camptotheca acuminata* leaves. *Botanical Bulletin- Academia Sinica Taipei*. 2003;44:99–105.
5. Priel E, Showalter SD, Blair DG. Inhibition of human immune deficiency virus (HIV-1) replication in vitro by non-cytotoxic doses of CPT, a topoisomerase I inhibitor. *AIDS Research and Human Retroviruses*. 1991;7(1):65–72.
6. Potmesil M. Camptothecins : From bench research to hospital wards. *Cancer Research*. 1994;54(6):1431–439.
7. Takeuchi S, Dobashi K, Fujimoto S, et al. A late phase II study of CPT-11 on uterine cervical cancer and ovarian cancer. Research groups of CPT-11 in gynecologic cancers. Gan to Kagaku Ryoho. *Cancer & Chemotherapy*. 1991;18(10):1681–1689.
8. Schaeppi U, Fleischman RW, Cooney DA. Toxicity of Camptothecin. *Cancer Chemotherapy Reports*. 1974;3:25–36
9. Ravi Kumar, Ved DK. 100 Red listed medicinal plants of conservation concern in southern India, *FRLHT*, Bangalore. 200;261–263.
10. Panneerselvam K, Bhavnisanankar K, Jayapragasam M, et al. Effect of growth regulators and planting media on rooting of cutting in *Nothapodytes nimmoniana* Mabblerly. *Indian Journal of Plant Physiology*. 2004;9:308–312.
11. Khadke S, Kuvalekar A. Direct somatic embryogenesis and plant regeneration from leaf and stem explants of *N. foetida*: acritically endangered plant species. *International Journal of Plant, Animal and Environmental Sciences*. 2013;3(1):257–264.
12. Fulzele DP, Satdive RK. Somatic embryogenesis, plant regeneration and the evaluation of the Camptothecin content in *Nothapodytes foetida*. *In Vitro Cellular & Developmental Biology Plant*. 2003;39:212–216.
13. Vasil IK, Vasil V (1986) In cell culture and somatic cell genetics of plants (ed. Vasil, I. K.), Academic press, New York 3:121–150.
14. Patil AS, Patil SR, Kale AS. Influence of growth regulators on germination and growth of endangered medicinal plant *Nothapodytes ni-*

- nimmoniana* J. Graham under shade net conditions. *Global Journal of Research on Medicinal Plants & Indigenous Medicine*. 2015;4(1):1–9.
15. Thengane SR, Kulkarni DK, Shrikhande VA, et al. Effect of Thidiazuron on adventitious shoot regeneration from seedling explants of *N. foetida*. *In vitro Cellular & Developmental Biology Plant*. 2001;37(2):206–210.
 16. Muralidharan EM, Mascarenhas AF. In vitro plantlet formation by organogenesis in *Eucalyptus camaldulensis* and by somatic embryogenesis in *Eucalyptus citriodora*. *Plant Cell Report*. 1987;6:256–259.
 17. Rani V, Raina SN. Genetic fidelity of organized meristem derived micropropagated plants: a critical reappraisal. *In Vitro Cellular & Developmental Biology Plant*. 2000;36:319–330.
 18. Merkle SA. Somatic embryogenesis in ornamentals. In: Geneve RL & Preece JE, editors. *Biotechnology of ornamental plants*. CAB International, Wallingford; 1997;13–33.
 19. Gupta PK, Timmis R, Mascarenhas AF. Field performance in micropropagated forestry species. *In Vitro Cellular & Developmental Biology Plant*. 1991;27:159–164.
 20. Gupta PK, Pullman G, Timmis R, et al. Forestry in the 21st century the biotechnology of somatic embryogenesis. *Biotech*. 1993; 11:454–459.
 21. Merkle SA. Strategies for dealing with limitations of somatic embryogenesis in hardwood trees. *Plant Tissue Culture*. 1995; 1:112–121.
 22. Baker BS, Bhatia SK. Factors affecting adventitious shoot regeneration from leaf explants of quince (*Cydonia oblonga*). *Plant Cell, Tissue and Organ Culture*. 1993;35:273–277.
 23. Preece JE, Huetteman CA, Ashby WC. Micro and cutting propagation of silver maple. I Result with adult and juvenile propagules. *Journal of the American Society for Horticultural Science*. 1991;116:142–148.
 24. Briggs BA, McCulloch SM, Edick LA. Micropropagation of azaleas using TDZ. *Acta Horticulturae*. 1998;226:205–208.
 25. Rai V. Rapid clonal propagation of *Nothapodytes foetida* (Wight) Sleumer a threatened medicinal tree. *In Vitro Cellular & Developmental Biology Plant*. 2002;38:347–351.
 26. Fulzele DP, Satdive RK. Somatic embryogenesis, plant regeneration and the evaluation of the Camptothecin content in *Nothapodytes foetida*. *In Vitro Cellular Development Biology Plant*. 2003;39:212–216.
 27. Tejavathi DH, Raveesha HR, Shobha K. Organogenesis from the culture of *Nothapodytes foetida* (Wight) Sleumer raised on TDZ supplemented media. *Indian Journal of Biotechnology*. 2012;11:205–209.
 28. Singh ND, Sahoo L, Sarin NB, et al. The effect of TDZ on organogenesis and somatic embryogenesis in pigeon pea (*Cajanus cajan* L. Millsp). *Plant Science*. 2003;164(3):341–347.
 29. Mundhara R, Rashid A. Recalcitrant grain legume *Vigna radiata*, Mung bean, made to regenerate on change of hormonal and cultural conditions. *Plant Cell Tissue Organ Culture*. 2006;85(3):265–270.
 30. Fulzele DP, Satdive RK. Distribution of anticancer drug CPT in *Nothapodytes foetida*. *Fitoterapia*. 2005;76:643–648.
 31. Li CY, Lin CH, Wu TS. Quantitative analysis of Camptothecin derivatives in *Nothapodytes foetida* using ¹H-NMR method. *Chemical and Pharmaceutical Bulletin (Tokyo)*. 2005;53(3):347–349.
 32. Namdeo AG, Sharma A, Fulzele DP, et al. Influence of geographical and climatic conditions on camptothecin content of *Nothapodytes nimmoniana*. *Records of Natural Products*. 2010;4:64–171.
 33. Patil A, Patil S, Mahure S, Kale A. UV, FTIR, HPLC Confirmation of Camptothecin an Anticancer Metabolite from Bark Extract of *Nothapodytes nimmoniana* (J. Graham). *American Journal of Ethnomedicine*. 2014;1(3):174–185.
 34. Sharma A, Chhikara S, Ghodekar SN, et al. Camptothecin: discovery and developments. *Pharmacognosy Review*. 2008; 2(4):219–227.
 35. Patil AS, Kale AS, Patil SR, et al. Validation of accumulation of camptothecin content, an anti-cancer alkaloid in *Nothapodytes nimmoniana* graham. In phenotypic variants: method for identifying high-yielding sources of alkaloid. *International Journal of Pharmacy and Pharmaceutical Sciences*. 2016;8(9):1–5.