

# Loop Mediated Isothermal PCR (LAMP) for the Detection of *Borrelia* from Blood Cultures

**Research Article****Abstract**

*Borrelia* organisms were harvested from blood culture and tested using single primers and loop mediated isothermal PCR (LAMP). Samples were harvested at either 6 days or at 8 weeks and DNA was extracted using one of three methods. In addition, pre-processing steps included Liberase treatments to release organisms from any residual attached collagen and human DNA removal. Combinations of processes were used to determine the best procedures for harvesting organisms, processing the pellet, and extracting DNA prior to using PCR. Of the total number of positive signals obtained, 9 of 45 (20%) gave positive signals when using plasmid primers specific for *B. burgdorferi*, 14 of 40 (35%) were positive when using OspC primers, and 25 of 47 (53%) were positive when using LAMP primers for the DNA that codes for 16S rRNA.

**Keywords:** LAMP; *Borrelia*; Liberase

Volume 2 Issue 3 - 2015

**Sheila Wood\* and Aki Datar**

Advanced Laboratory Services, USA

**\*Corresponding author:** Sheila Wood, Advanced Laboratory Services, 501 Elmwood Ave, Sharon Hill, 19079 Pennsylvania, USA, Tel: 484 494 6125; Fax: 484 494 6800; Email: swood@advanced-lab.com

**Received:** April 13, 2015 | **Published:** June 03, 2015

**Abbreviations:** LAMP: Loop Mediated Isothermal PCR; ALSI: Advanced Laboratory Services, Inc.; CLSI: Clinical Laboratory Standards Institutes

## Introduction

The causative agent of Lyme disease, *Borrelia burgdorferi*, has proven to be difficult to culture in the laboratory. While organisms from ticks are routinely cultured in research labs using BSK media, the human pathogen found in the bloodstream is difficult to culture in artificial media. Advanced Laboratory Services, Inc. (ALSI) uses a modified blood culture media containing BSK-H, 12% rabbit serum and a collagen matrix [1]. The culture media is inoculated with the patient's blood and both short term (6 days) and long term cultures (8 to 16 weeks) are established. The 8 week to 16 week culture contains the collagen matrix. The use of this collagen matrix enhances the growth of *Borrelia* in the artificial laboratory culture media.

The positive control that is used to monitor these cultures is *B. burgdorferi* B31 ATCC 35210, originally isolated from an *Ixodes dammini* tick in New York. It is the type strain for *B. burgdorferi*, does not contain lipopolysaccharide, survives in experimentally infected human blood, is known to cause Lyme disease, is cultured at 34°C in BSK-H media under microaerophilic conditions, grows at three to five days, and its genome has been sequenced. The negative control, *Escherichia coli* ATCC 25922, is designated FDA strain Seattle 1946 Serotype 06, Biotype 1. It does not produce verotoxin and is used as a Clinical Laboratory Standards Institute (CLSI) strain for antimicrobial testing and for microbial identification in automated testing devices.

Investigators have used PCR to target *Borrelia* species found in ticks. These methods have included the use of nested primers, single tube nested primers [2], non-nested primers, and real time PCR to amplify *Borrelia* DNA. Such techniques were used to amplify DNA from ticks found in Norway, Germany and Austria. The genetic targets in these studies included intergenic spacer regions, OspA and the flagellin gene [2-4]. LAMP technology has been used to target organisms directly from blood and to identify organisms grown in the laboratory [5,6].

In our study, LAMP was used to amplify small amounts of DNA in the presence of inhibitors from patient blood cultures. LAMP primers were designed to detect DNA that codes for the 16S ribosomal unit of *B. burgdorferi*. Two other primer constructions were also tested on prepared samples. These primers were directed against the DNA that codes for the surface antigen OspC [7] and DNA specific for *B. burgdorferi* that is carried on a stable plasmid (personal communication, Radhey Gupta). Samples were harvested from culture as described by Sapi et al. [1].

## Materials and Methods

### Treatment of pellets using Liberase TL

Liberase TL was used to release the organisms from any collagen that might be attached to the organism resulting from the harvesting process. Liberase TL was prepared using a stock solution of 2.5mg/mL, the equivalent of 13U/mL. 6µL of stock solution were added to 5mL PBS. This resulted in a final concentration of 2 U/mL in 1 X PBS which was added to the pellet in the tube and incubated for 4 min at 37°C. Following the incubation period, 25µL of Proteinase K was added to the tube to stop the reaction. Tubes were stored at -20°C until further use.

### Removal of human DNA and RNA

Prior to extracting *Borrelia* DNA from the patient samples, human DNA was removed [8]. This method used Oxgall (5%) to rupture mammalian cells and micrococcal nuclease to inactivate mammalian DNA. Controls were performed to ensure that *Borrelia* DNA would remain intact during this process. Concentrations of Oxgall at 1%, 1.5%, 2%, 5%, and 10% in PBS were mixed with *B. burgdorferi* N40 at a concentration of  $2.6 \times 10^7$  cells, incubated at 37°C for 10 minutes, and densities were then read in a counting chamber.

To remove human DNA from patient samples harvested from blood culture [8], 200µL of the Liberase treated sample was mixed with 200µL 10% Oxgall (prepared in Type 1 autoclaved water) for a final concentration of Oxgall at 5%. The tubes were incubated at room temperature for 10 minutes, and then centrifuged at 13,000 rpm for 5 minutes and the supernatant discarded. The

pellet was resuspended in 100µL of 0.1µM CaCl<sub>2</sub> and 5µL (10<sup>3</sup> gel units) micrococcal nuclease and incubated at 37°C for 10 minutes. Following centrifugation at 13,000 rpm for 5 minutes, the pellet was resuspended in 200µL 1 X PBS and 10µL molecular grade Proteinase K was added. Incubation for 5 minutes at room temperature was performed to inactivate residual micrococcal nuclease before extracting the DNA.

### Extraction of bacterial DNA using the MagJet Kit

DNA was extracted from samples using the MagJet Genomic DNA Kit (Cat. # K2721 Thermo Fisher Scientific, Life Technologies). This kit is designed for DNA extraction from bacteria, blood and tissues among other biological materials. Instructions were followed per the manufacturer.

### Extraction of DNA using the Qiagen Kit

Bacterial DNA was also extracted using Cat # 51306 manufactured by Qiagen. This kit is designed to harvest both chromosomal and plasmid DNA from bacteria. The instructions supplied by the manufacturer were followed for this process.

### Extraction of DNA using the MP Biomedical Fast Prep 24 semi-automated extractor

Tubes and processes for isolation of DNA from bacteria in soil samples were used as suggested by the manufacturer.

### Harvesting time intervals

As designated in Table 1, harvesting from positive cultures was performed at various points in the life cycle of the culture. Harvest time points were 6 day positive and harvested at 6 days, 6 day positive and harvested at 8 weeks, eight week positive and harvested at 8 weeks.

**Table 1:** PCR results using varied harvesting timepoints, pre-processing steps, DNA extraction methods and PCR primer configurations.

		LAMP	Plasmid	OspC	
DNA extracted using Magjet	1	Pos	Neg	Pos	Day 6 positive Harvested Day 6 No Liberase treatment Human DNA not removed
	2	Pos	Neg	Pos	
	6	Pos	Neg	Neg	
	7	Pos	Neg	Neg	
	8	Pos	Neg	Neg	
DNA extracted using Magjet	10	Pos	Neg	Pos	Day 6 positive Harvested 8 weeks Treated with Liberase Human DNA removed
	13	Pos	Neg	Pos	
	14	Pos	Neg	Neg	
	15	Pos	Neg	Neg	
	16	Pos	Neg	Neg	
DNA extracted using Qiagen Kit 51306	17	Pos	Neg	Neg	Day 6 positive Harvested Day 6 Liberase treated Human DNA removed
	18	Pos	Neg	Neg	
	23	Pos	Neg	Pos	
	25	Pos	Neg	Neg	
	26	Pos	Neg	Pos	
	27	Pos	Neg	Neg	
	28	Pos	Neg	Pos	
	57	Pos	Neg	Pos	

DNA extracted using MagJet	A	Neg	Neg	Neg	Day 6 positive Harvested Day 6 No Liberase treatment Human DNA removed Zeolite added
	B	Neg	Neg	Neg	
	C	Neg	Neg	Pos	
	D	Neg	Neg	Neg	
	E	Neg	Neg	Neg	
	F	Neg	Neg	Neg	
DNA extracted using MP Biomedical Fast Prep extractor	S51	Neg	Neg	ND	Day 6 positive Harvested Day 6 No Liberase treatment Human DNA not removed
	S53	Neg	Neg	ND	
	S54	Neg	Neg	ND	
	S56	Neg	Neg	ND	
MP Biomedical FastPrep 24 extractor	S64	Neg	Neg	ND	8 wk pos, harvested 8 wk No Lib; Human removed
	8ES28	Pos	ND	ND	
	8ES45	Pos	ND	ND	
DNA extracted using MagJet	8MS1	Neg	Pos	Neg	8 wk positive Harvested 8 weeks No Liberase treatment Human DNA removed
	8MS2	Neg	Neg	Pos	
	8MS3	Neg	Neg	Pos	
	8MS4	Neg	Pos	Pos	
	8MS6	Neg	Pos	Neg	
	8MS7	Neg	Pos	Neg	
	8MS9	Neg	Neg	Pos	
	8MS12	Neg	Pos	Neg	
	8MS16	Neg	Pos	Neg	
	8MS22	Neg	Pos	Pos	
8MS24	Neg	Pos	Neg		
DNA extracted using MagJet	8MS61	Pos	Neg	Neg	8 wk positive Harvested 8 weeks Liberase treated Human DNA removed
	8MS62	Pos	Neg	Neg	
	8MS64	Pos	Neg	Neg	
	8MS70	Pos	Neg	Neg	
		25/47	9 of 45	14/40	
		53%	20%	35%	

### PCR using OspC primers

Primers directed against the OspC gene were developed by Qiu et al. [7]. From this publication, primer designations OC6 F+ and OC602 R- were used. The master mix was prepared using 1-25ng of template, 20µM of each dNTP, PCR buffer, 1.5mM MgCl<sub>2</sub>, 400 pM of each primer, 1.5 U of Taq, and 5% glycerol. The cycling conditions were 95°C for 5min, 95°C for 30sec, 50.5°C for 30sec, 72°C for 1min 30sec, repeat from step 2 for 39 times, and 72°C for 5min and 4°C keep. Two complete PCR cycles were run using the same primers. The size of the amplicon was 600 base pairs and amplicon size was confirmed by running a 2% agarose gel and using the 100 to 1000 bp ladder. Control DNA from *B. burgdorferi* B31 ATCC 35210 and *E. coli* ATCC 25922 were used with each run to validate the master mix conditions and cycling conditions.

### PCR using *B. burgdorferi* plasmid gene primers

Primers directed against stable plasmids carried by *B.*

*burgdorferi* were obtained from Dr Radhey S. Gupta, McMaster University, Hamilton, Ontario, Canada. These primers targeted the organism at the genus level. The forward primer was 5'-CTTGTCAAACCTTATCAAATAGC-3' and the reverse primer, 5'-AAATATGAATCATAAAAATCG-3'. Master mix was prepared using 1-25 ng of template, 20 μM of each dNTP, PCR buffer, 1.5mM MgCl<sub>2</sub>, 400 pM of each primer, 1.5 U of Taq, and 5% glycerol. The cycling conditions were 95°C for 5min, 95°C for 30sec, 55°C for 30sec, 72°C for 1min 30sec, repeat from step 2 for 39 times, and 72°C for 5 min and 4°C keep. Two complete PCR cycles were run using the same primers. The size of the amplicon was 296 base pairs and amplicon size was confirmed by running a 2% agarose gel and using the 100 to 1000 bp ladder. Control DNA from *B. burgdorferi* B31 ATCC 35210 and *E. coli* ATCC 25922 were used with each run to validate the master mix conditions and cycling conditions.

**PCR using LAMP 16S rRNA primers for *B. burgdorferi***

**Table 2:** LAMP designed primers used in the reaction mix.

Name	Primer	nmol/OD	Position	Length	Tm	GC%
F3	GCTAATACCGAATAAGGTCAGT	3.9	148	22	60	41
B3	CGTCATCACTTTGTCAATTCC	4.9	472	21	60	43
FIP(F1c+F2)	TGTGACCGTTACCCCTCTCAGCGTCTTATTAGCTAGTTGGT	2.4		41		
BIP(B1c+B2)	AGACTCCTACGGGAGGCAGTCTTCATTACGCAGTGTC	2.5		38		
LoopF	CGGTTACTTATCATTGCCTTGG	4.4	280	22	62	46
LoopB	CAGCTAAGAATCTCCGCAATG	4.1	343	22	62	46
F2	GCGTCTTATTAGCTAGTTGGT	4.5	224	21	60	43
F1c	TGTGACCGTTACCCCTCTCA	5.1	303	20	65	55
B2	TCTTCATTACGCAGTGTC	5.2	402	19	60	47
B1c	AGACTCCTACGGGAGGCAG	4.7	324	19	65	63

**Table 3:** All reaction mix reagents were purchased from Lucigen in the OmniAmp™ RNA/DNA Kit and the reactions were set up using the concentrations.

Component	Concentration
Nuclease-free water	to 25uL/tube
10X DNA Polymerase Buffer C	1X
dNTP's (25mM each)	800μM
100mM MgSO <sub>4</sub>	8mM
5M Betaine	0.5 M
Target-specific Primer Mix	Variable
OmniAmp DNA Polymerase, 50X	2X
Template	0.01ng - 100ng

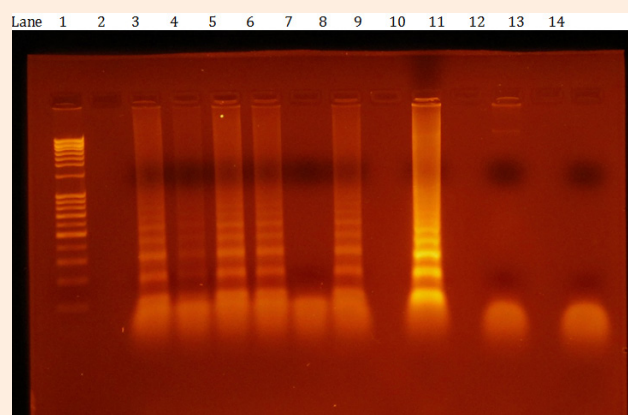
**Results**

Figure 1 shows an example of the gel profile obtained when LAMP primers were used to amplify the DNA that codes for 16S rRNA of the *Borrelia* organism. The gel represents data from six patients plus a positive control, a negative control, and a water control. Gel patterns show multiple bands in a fixed configuration when positive results are obtained.

Results in Table 1 show that the LAMP PCR was positive in 53% of the positive samples. The conditions used included positive at

Ten LAMP primers were designed to target the DNA that codes for the 16S rRNA region of *Borrelia* using Primer Explorer primer design software (Table 2). Reagents obtained from Lucigen for the LAMP reaction contain DNA polymerase, a reverse transcriptase enzyme, and strand displacement capabilities. This allows detection of either DNA or RNA targets. PCR master mix was prepared using these reagents (Table 3). A volume of 25μL per reaction tube was used. Each tube contained from 1-2μL of template with an effort to keep the concentration near 20ng, although concentrations ranging from 0.01ng to 100ng are acceptable. Reaction tubes were incubated at 65°C for 25 minutes and the amplicons were immediately analyzed on an agarose gel. Control DNA from *B. burgdorferi* B31 ATCC 35210 and *E. coli* ATCC 25922 were used with each run to validate the master mix and cycling conditions. Amplicons were run on a 1.2% agarose gel using the 1 kb DNA ladder. Samples were prepared using 2μL of loading dye plus 18μL amplicon. Fifteen μL of this preparation was loaded onto the gel and run at 100 volts for 30 minutes (Figure 1).

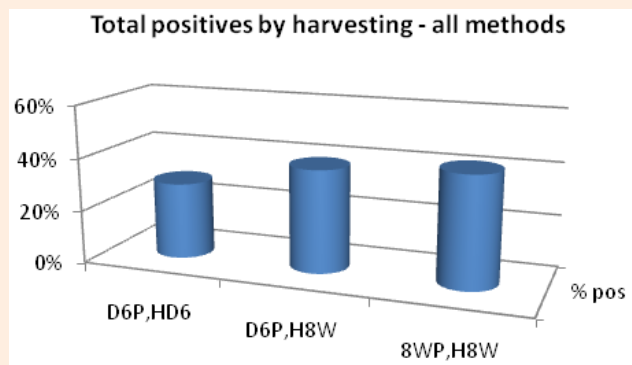
6 days and harvested at 6 days, positive at 6 days and harvested at 8 weeks, positive at 8 weeks and harvested at 8 weeks, DNA extraction using MagJet methodology (magnetic beads), DNA extraction using the Qiagen Kit Cat # 51306 (spin columns), Liberase TL treatment and human DNA removed, no Liberase treatment, no human DNA removed.



**Figure 1:** Lane 1 is the kb DNA ladder, Lane 2 is empty, Lane 3-8 are patient samples, Lane 9 is empty, Lane 10 is *B. burgdorferi* B31 ATCC 35210 positive control, Lane 11 is empty, Lane 12 is *E. coli* ATCC 25922 negative control, Lane 13 is empty, and Lane 14 is water control.

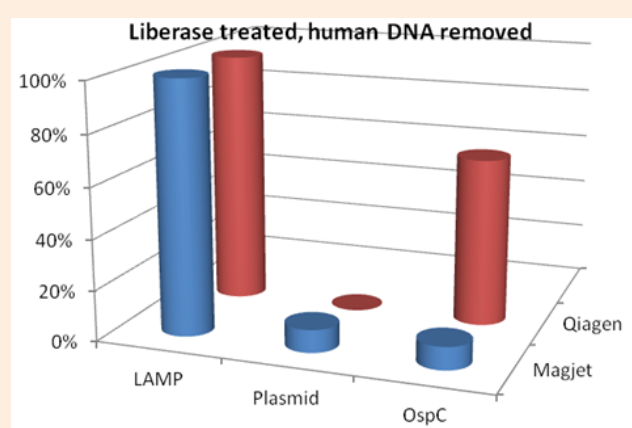
In twenty-two of the samples, negative results were obtained using LAMP when human DNA was not removed and/or Liberase treatment was not applied. Six samples, however, did give positive results with LAMP when pre-processing was not performed.

Data extraction and analysis can be derived from Table 1. For example, positive signal comparisons at each collection time point are made in Figure 2. Considering all pre-processing steps collectively and all PCR methods, harvesting of 8 week positives at 8 weeks gave slightly more positives than either of the other two collection times. Collective positive results showed a positive rate in 6 day positives harvested at 6 days of 29%, a positive rate in 6 day positives harvested at 8 weeks of 39%, and a positive rate in 8 week positives harvested at 8 weeks of 42%.



**Figure 2:** Collective positive rates of samples harvested at three different time points. D6P, HD6=6 day positive, harvested at 6 days. D6P, H8W=6 day positive, harvested at 8 weeks. 8WP, H8W=8 week positive, harvested at 8 weeks.

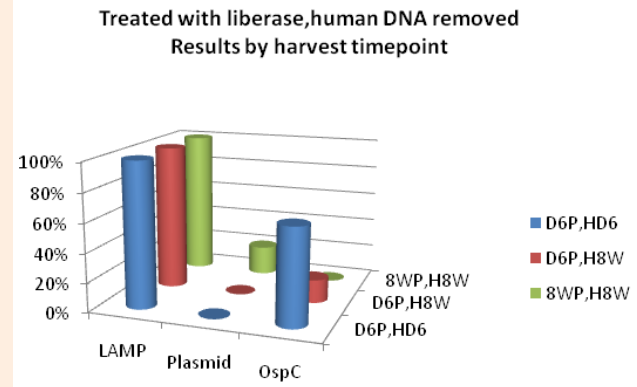
In a breakdown of the differences based on extraction method, the following comparisons are made in Figure 3. In pellets treated with Liberase TL and with human DNA removed, the LAMP targeting DNA that codes for 16S rRNA out-performed both the plasmid primers and the OspC primers when DNA extractions were performed using either Magjet or Qiagen kits.



**Figure 3:** Comparison of LAMP 16S ribosomal PCR, plasmid PCR, and OspC PCR when DNA was extracted using either Magjet or Qiagen kit Cat #51306. These samples were treated with Liberase TL and had the human DNA removed.

Differences based on harvesting time points show additional relationships. LAMP primers performed substantially better

(Figure 4) than either the plasmid primers or the OspC primers. The LAMP method showed a 100% positive rate at each harvest time point when samples were pre-treated with Liberase TL and processed to remove human DNA.



**Figure 4:** Comparison of three PCR procedures at three harvesting time-points. All samples were treated with Liberase TL and the human DNA was removed from the samples.

### Discussion

LAMP technology was originally developed around the ability to perform PCR in the field or outside of a laboratory [9-14]. This has resulted in kits with workflow and simplicity advantages that can be performed outside of a biological hood on the bench in the clinical microbiology laboratory when pre-prepared lyophilized reagents are used. This application allows the addition of sample in buffer to a tube of lyophilized reagents, incubation at one temperature [15], and reads of turbidity or fluorescence using a simple instrument [16,17]. An additional advantage is that the nucleic acid in the sample does not have to be extracted or purified. LAMP primers are designed to amplify in a loop formation and then prime off the loops [18,19]. This serves as a way of generating considerably more product in considerably less time than conventional PCR [20].

To contrast the conventional PCR process with the LAMP process, LAMP can be performed in 30 min to 2 hours from sample to signal in a single tube at one temperature at low cost. Conventional PCR from sample to signal can take anywhere from one to two workdays even when using an automated nucleic acid extractor. It requires three separate rooms in the clinical laboratory, multiple tubes, complex preparation, a multiple temperature cycling instrument, and a means to detect the amplicons that are generated. For our application, two pre-processing steps, DNA extraction, two rounds of PCR in a thermo cycler, and a gel to visualize the signal was necessary when conventional PCR techniques were used. Not only does LAMP technology reduce the time for set up and signal generation, it allows the amplification of very small amounts of DNA in the sample and overcomes inhibiting substances that interfere with conventional PCR. Our data (Figure 3 and 4) clearly shows the ability of LAMP technology to out-perform conventional PCR.

The Lucigen OmniAmp reagents, designed specifically for LAMP amplification, contain specialized nucleic acid polymerases plus reverse transcriptase and allow for the amplification of DNA and RNA. In certain situations, especially viral amplification, this

is a necessary added advantage [21]. A combination of LAMP primers has been used in multiplex reactions [22,23] and various approaches to designing the primers exist [24].

Considering the various time points and processes used to prepare DNA from blood culture for the PCR process, certain aspects can be observed. For example, for the majority of positive samples, two pre-processing steps and LAMP technology for amplification gave the best results. It is interesting to note that when using simple sense and antisense primers with two rounds of PCR, standard reagents and two pre-processing steps, inconsistent results were obtained. More consistent results were displayed when LAMP primers and Lucigen OmniAmp DNA and RNA reagents were used. Lucigen reagents contain both a DNA polymerase and a reverse transcriptase. Although DNA was used in these studies, future studies will take advantage of the fact that both RNA and DNA can be amplified during the detection process.

## References

- Sapi E, Pabbati N, Datar A, Davies EM, Rattelle A, et al. (2013) Improved Culture Conditions for the Growth and Detection of *Borrelia* from Human Serum. *Int J Med Sci* 10(4): 362-376.
- Picken MM, Picken RN, Han D, Cheng Y, Strle F (1996) Single-tube nested polymerase chain reaction assay based on Flagellin gene sequences for detection of *Borrelia burgdorferi* sensu lato. *Eur J Clin Microbiol Infect Dis* 15(6): 489-498.
- Strube C, Montenegro VM, Epe C, Eckelt E, Schnieder T (2010) Establishment of a minor groove binder probe based quantitative real time PCR to detect *Borrelia burgdorferi* sensu lato and differentiation of *Borrelia spielmanii* by *Osp-A* specific conventional PCR. *Parasit Vectors* 3: 69.
- Tveten AK (2013) Prevalence of *Borrelia burgdorferi* sensu stricto, *Borrelia afzelii*, *Borrelia garinii*, and *Borrelia valaisiana* in Ixodes ricinus ticks from the northwest of Norway. *Scand J Infect Dis* 45(9): 681-687.
- Poon LL, Wong BW, Ma EH, Chan KH, Chow LM, et al. (2006) Sensitive and inexpensive molecular test for falciparum malaria: detecting *Plasmodium falciparum* DNA directly from heat-treated blood by loop-mediated isothermal amplification. *Clin Chem* 52(2): 303-306.
- Sen K, Ashbolt NK (2010) *Environmental microbiology: current technology and water applications*. Caister Academic Press, USA.
- Qiu WG, Dykhuizen DE, Acosta MS, Luft BJ (2002) Geographic uniformity of the Lyme disease spirochete (*Borrelia burgdorferi*) and its shared history with tick vector (*Ixodes scapularis*) in the Northeastern United States. *Genetics* 160(3): 833-849.
- Zhou L, Pollard AJ (2012) A Novel Method of selective removal of human DNA Improves PCR sensitivity for detection of *Salmonella* Typhi in blood samples. *BMC infect Dis* 12: 164.
- Chander Y, Koelbl J, Puckett J, Moser MJ, Klingele AJ, et al. (2014) A novel thermostable polymerase for RNA and DNA loop-mediated isothermal amplification (LAMP). *Front Microbiol* 5: 395.
- Georgie M (2009) *Global health diagnostics: research, development and regulation*. Academy of Medical Sciences Workshop Report, UK.
- Njiru ZK, Mikosza AS, Matovu E, Enyaru JC, Ouma J, et al. (2008) African trypanosomiasis: Sensitive and rapid detection of the sub-genus *Trypanozoon* by loop-mediated isothermal amplification (LAMP) of parasite DNA. *Int J Parasitol* 38(5): 589-599.
- Njiru ZK, Mikosza AS, Armstrong T, Enyaru JC, Ndung'u JM et al. (2008) Loop-Mediated Isothermal Amplification (LAMP) Method for Rapid Detection of *Trypanosoma brucei rhodesiense*. *PLoS Negl Trop Dis* 2(1): e147.
- Sattabongkot J, Tsuboi T, Han ET, Bantuchai S, Buates S (2014) Loop-mediated isothermal amplification (LAMP) for diagnosis of malaria infections in an endemic setting in Thailand. *J Clin Microbiol* 52(5): 1471-1477.
- <http://www.google.co.in/patents/US6410278>
- Geojith G, Dhanasekaran S, Chandran SP, Kenneth J (2011) Efficacy of loop mediated isothermal amplification (LAMP) assay for the laboratory identification of *Mycobacterium tuberculosis* isolates in a resource limited setting. *J Microbiol Methods* 84(1): 71-73.
- Mori Y, Kitao M, Tomita N, Notomi T (2004) Real-time turbidimetry of LAMP reaction for quantifying template DNA. *J Biochem Biophys Methods* 59(2): 145-157.
- Mori Y, Nagamine K, Tomita N, Notomi T (2001) Detection of loop-mediated isothermal amplification reaction by turbidity derived from magnesium pyrophosphate formation. *Biochem Biophys Res Commun* 289(1): 150-154.
- Nagamine K, Hase T, Notomi T (2002) Accelerated reaction by loop-mediated isothermal amplification using loop primers. *Mol Cell Probes* 16(3): 223-229.
- Notomi T, Okayama H, Masubuchi H, Yonekawa T, Watanabe K, et al. (2000) Loop-mediated isothermal amplification of DNA. *Nucleic Acids Res* 28(12): E63.
- Francois P, Tangomo M, Hibbs J, Bonetti EJ, Boehme CC, et al. (2011) Robustness of a loop-mediated isothermal amplification reaction for diagnostic applications. *FEMS Immunol Med Microbiol* 62(1): 41-48.
- Curtis KA, Rudolph DL, Owen SM (2008) Rapid detection of HIV-1 by reverse-transcription, loop-mediated isothermal amplification (RT-LAMP). *J Virol Methods* 151(2): 264-270.
- Iseki H, Alhassan A, Ohta N, Thekisoe OM, Yokoyama N, et al. (2007) Development of a multiplex loop-mediated isothermal amplification (mLAMP) method for the simultaneous detection of bovine *Babesia* parasites. *J Microbiol Methods* 71(3): 281-287.
- Tanner NA, Zhang Y, Evans TC (2012) Simultaneous multiple target detection in real-time loop-mediated isothermal amplification. *Biotechniques* 53(2): 81-89.
- Torres C, Vitalis EA, Baker BR, Gardner SN, Torres MW, et al. (2011) LAVA: an open-source approach to designing LAMP (loop-mediated isothermal amplification) DNA Signatures. *BMC Bioinformatics* 12: 240.