

# Mapping QTLs for Physiological Traits Associated with Drought Tolerance in Rice (*Oryza Sativa* L.)

## Abstract

The present investigation mainly focused to study the physiological and molecular characterization of 101 Backcross Inbred Lines (BILs) of rice (BC1F5) for drought tolerance derived from the cross combination of Norungan // TKM9/ Norungan. The traits like photosynthetic rate, transpiration rate and stomatal conductance were observed using infrared gas analyzer (IRGA) and the population was phenotyped for other traits. Estimation of genetic parameters revealed that, among the physiological traits observed, the trait transpiration rate recorded higher value of heritability (0.28) and genetic advance (17.49). Association analysis recorded that, all the physiological traits studied under severe water deficit condition had high and significant positive correlation with plot yield. The trait photosynthetic rate had exhibited significant positive correlation with transpiration rate and stomatal conductance but recorded negative correlation with relative water content (RWC). Single marker analysis was performed with the genetic data and the trait mean values observed under stress condition. Among 167 SSR (microsatellite) markers surveyed, around 15 markers were identified and found to be linked to at least one of the investigated trait and many markers were reported to be linked with more than one trait. Characterization of Quantitative trait loci (QTLs) for drought tolerance in this study provides insight into an understanding of the mode of drought tolerance in rice and to perform MAS (Marker aided selection) aimed at the efficient pyramiding of favorable QTL alleles to improve drought tolerance in elite background of popular rice varieties.

**Keywords:** Drought; Backcross inbred lines; Infra red gas analyzer; Rice; Microsatellites; Quantitative trait loci (QTLs)

## Research Article

Volume 3 Issue 3 - 2016

**Ramchander S<sup>1\*</sup>, Raveendran M<sup>3</sup> and Robin S<sup>2</sup>**

<sup>1</sup>Department of Rice, Centre for Plant Breeding and Genetics, India

<sup>2</sup>Dean (SPGS), Tamil Nadu Agricultural University, India

<sup>3</sup>Department of Biotechnology, Centre for Plant Molecular Biology and Biotechnology, India

**\*Corresponding author:** Ramchander S, Research Associate, Department of Rice (CPBG), Tamil Nadu Agricultural University, Coimbatore-641003, Tamil Nadu, India, Tel: 9952366729, Email: rubulochander\_009@yahoo.co.in

**Received:** October 31, 2016 | **Published:** December 12, 2016

**Abbreviations:** RWC: Relative Water Content; BILs: Backcross Inbred Lines; QTL: Quantitative Trait Loci; ROS: Rain Out Shelter; IRGA: Infrared Gas Analyser; MABC: Marker Assisted Backcrossing; MAS: Marker Aided Selection

## Introduction

Drought is the most important limiting factor for crop production and it is becoming an increasingly severe problem in many regions of the world [1]. According to FAO statistics, the percentage of drought affected land areas more than doubled from the 1970s to the early 2000s in the world [2]. Drought is a world-spread problem seriously influencing grain production and quality and with increasing population and global climate change the situation is becoming more serious [3]. Rice (*Oryza sativa* L.) is particularly susceptible to water stress [4,5]. It is estimated that 50% of the world rice production is affected more or less by drought [6].

To improve crop productivity, it is necessary to understand the mechanism of plant responses to drought conditions with the ultimate goal of improving crop performance in the vast areas of the world where rainfall is limiting or unreliable. In addition to the complexity of drought itself [1], whole plant responses to drought are complex as different mechanisms are adopted when

drought is encountered [7]. Developing rice cultivars with inbuilt drought tolerance mechanism(s) will increase rice production under rainfed environments. However, conventional breeding has met with little success due to complexity of stress tolerance mechanisms and low heritability of yield under stress. Putative traits conferring drought tolerance in rice have been proposed, but incorporation of these traits in breeding programme is limited due to difficulty in screening large germplasm for these secondary traits [8]. Many studies reported various strategies, including the measurement of net photosynthetic rate, leaf water potential, water use efficiency, osmotic adjustment, stomatal tolerance, strength and distribution of root systems and the level of leaf rolling under drought stress [9,10], to evaluate drought tolerance under water stress conditions. Until recently, lack of concept, direction, and protocol has remained as a significant obstacle to genetic improvement of drought tolerance [11].

Drought tolerance is a complex trait, and a number of quantitative trait loci (QTL) for drought tolerance in rice have been identified [12]. Because of the complexity of drought stress and the range of conditions to which rainfed rice crops are exposed, a multifaceted breeding strategy including marker-assisted approaches is necessary to manipulate drought tolerance in rice [13]. In the past decade, the availability of molecular markers coupled with precision phenotyping has led to the identification of

several quantitative trait loci (QTLs) for grain yield under drought qDTYs from Apo, Adaysel, N22 and Wayrarem [14]. Most of these QTLs have been discovered through single marker analysis and fine mapping of these QTLs and identifying candidate genes underlying these QTLs will help in deployment of these QTLs in breeding programs. Selecting rice for drought tolerance based on unknown genetic mechanisms will result in inefficient genetic improvement. Molecular tools facilitate the identification and genomic localization of genes controlling traits related to drought tolerance using quantitative trait loci (QTL) analysis.

## Materials and Methods

The present study involved in phenotyping of different physiological traits and genotyping of an indigenously developed advanced backcross population of rice for drought tolerance. Backcross Inbred Lines (BILs) were developed using Norungan and TKM9 as the parents. TKM9 was crossed with Norungan and  $F_1$  was backcrossed to Norungan once.  $BC_1F_1$  of Norungan / TKM9// Norungan were selfed and a large population of  $BC_1F_2$  was selected upon for dwarf/semi-dwarf plants to improve the agronomy of the population. Selected  $BC_1F_2$  progenies were selfed further and a set of 289 BILs were developed in  $BC_1F_4$  generation. The population was screened under irrigated condition during Kharif 2009 and a total of 101 lines which yielded significantly higher than population mean were chosen for further study in  $BC_1F_5$  generation.

## Phenotyping of physiological traits in BILs

The BILs along with the parents were phenotyped for various physiological attributes under severe water stress (SS) condition under Rain out Shelter (ROS) at Tamil Nadu Agricultural University, Coimbatore. Plant samples were taken at both vegetative and maturity stages for recording various physiological characters under severe moisture stress conditions. Physiological traits were estimated with the help of Infrared gas analyzer (IRGA) and estimation of relative water content (RWC) was based on the method of Barrs et al. [15] under stress condition in ROS. The correlations were computed by using the physiological traits in stress condition for yield traits and also between derived traits.

## Measurement by infrared gas analyzer (IRGA)

Infrared Gas Analyzer (IRGA) is a portable photosynthetic system (LICOR- Model LI 6400 version.5) and major component used for the measurement of different parameters like photosynthetic rate, stomatal conductance and transpiration rate. The parameters measured by Infrared Gas Analyzer (IRGA) and their units are Photosynthetic rate ( $A$ ,  $\mu$  mol  $CO_2$   $m^{-2}$   $s^{-1}$ ), Stomatal Conductance ( $g_s$ , mol  $H_2O$   $m^{-2}$   $s^{-1}$ ) and Transpiration rate ( $E$ , mmol  $H_2O$   $m^{-2}$   $s^{-1}$ ).

## Estimation of relative water content (RWC)

Relative water content is the appropriate measure of plant water status in terms of the physiological consequence of cellular water deficit while water potential as an estimate of plant water status is useful in dealing with water transport in the soil-plant-atmospheric continuum. The basic principle [15] of this technique consists essentially in comparing the water content of leaf tissue when

fresh leaf sampled with the fully turgid water content and expressing the results on percentage basis.

Relative water content was estimated by Weatherley method and expressed in percentage. Leaf RWC was calculated using the formula presented below

$$RWC = \frac{\text{Fresh weight} - \text{Dry weight}}{\text{Turgid weight} - \text{Dry weight}} \times 100$$

## Genotyping of BILs

The DNA was extracted from the leaf samples of parents and BILs using liquid nitrogen and CTAB method [16] with suitable modifications [17]. The nucleic acids were quantified by the methods of Spectrophotometric determination and gel electrophoresis (0.8% agarose gel). DNA concentration for PCR amplification was estimated by comparing the band intensity of a sample with the band intensities of known dilutions that have good amplification. The dilutions were carried out by dissolving the genomic DNA in appropriate volume of TE buffer. The population (BILs) was genotyped using 167 SSR (Simple Sequence Repeats) primer pairs for amplifying genomic DNA fragment by polymerase chain reaction. The amplification was carried out in an Eppendorf master cycler provided with gradient option. The procedure includes initial denaturation at 94 degree centigrade for 5 minutes, followed by denaturation at 94 degree centigrade for 1 minute, annealing at 55 degree centigrade for 1 minute, extension at 72 degree centigrade for 2 minutes and final extension at 72 degree centigrade for 5 minutes. The resultant PCR products of SSR primer pairs were resolved by agarose gel electrophoresis on 1.5% to 3% agarose gel to understand the difference in molecular weight of the products. Bands were visualized by staining the gels with ethidium bromide and photographed under UV light using Alpha Imager 2200.

## Single marker analysis

Single marker analysis was carried out using the software, QTL CARTOGRAPHER v2.5. This analysis fitted into the linear regression model:  $y = b_0 + b_1 x + e$ .

The results were obtained as the estimates for  $b_0$ ,  $b_1$  and the F statistic for each marker. Since we are interested in whether the marker is linked to a QTL for a trait we tested the hypothesis if  $b_1$  is significantly different from zero. The F statistic compares the hypothesis  $H_0: b_1 = 0$  to an alternative  $H_1: b_1 \neq 0$ . The  $p$  (F) is a measure of how much support there is for  $H_0$ . A smaller  $p$  (F) indicates less support for  $H_0$  and thus more support for  $H_1$ . Likelihood ratio test statistic compared two nested hypotheses and was two times the negative natural log of the ratio of the likelihoods. For example, assume that hypothesis  $H_0$  is nested within  $H_1$  and that they have likelihoods  $L_0$  and  $L_1$  respectively. Then, the "Likelihood Ratio Test Statistic" is  $-2\ln(L_0/L_1)$ .

## Results and Discussion

### Variation in physiological traits of BILs

The experiment under rain out shelter was conducted to impose severe drought stress on the plants, thereby enabling to observe significant variation among the BILs for all investigated

component traits, which indicated the presence of genetic variation for drought response among the parents and BILs in the study. Among the physiological traits studied under severe stress condition, the trait relative water content (RWC) had recorded the highest phenotypic and genotypic variance of 45.52 and 19.03 which was followed by photosynthetic rate has the phenotypic and genotypic variance of 10.54 and 2.40 respectively. The trait stomatal conductance had registered the lowest phenotypic and genotypic variance of around 0.02 and 0.002 respectively. The trait plot yield had recorded the highest phenotypic and genotypic variance (2197.05 and 1468.58) (Table 1). These findings are similar to the assumption that traits are much significantly

influenced by the environmental factors under moisture stress condition [18].

Heritability is the ability of the characters to inherit into the subsequent generation. Among the physiological traits, the trait relative water content had recorded the highest heritability of 0.42 with the genetic advance as percentage of mean of 7.04 whereas the trait transpiration rate had registered a heritability of 0.28 and genetic advance of 17.49 which was higher when compared to other physiological traits. The trait plot yield had recorded the highest heritability value of 0.67 and genetic advance of 54.82 followed by the trait harvest index (0.60 and 46.26) [19,20](Table 1).

**Table 1:** Estimation of genetic parameters for different physiological traits under severe stress condition.

Traits	TKM9	Norungan	BILs			V <sub>g</sub>	V <sub>p</sub>	GCV	PCV	h <sup>2</sup>	GA% Mean
			Mean	Range	CD%						
Photosynthetic rate (PR)	18.52	24.83	21.83	16.88-32.69	4.61	2.4	10.54	7.09	14.85	0.23	6.97
Transpiration rate (TR)	4.58	6.74	5.64	3.37 - 9.90	2.27	0.8	2.82	15.91	29.84	0.28	17.49
Stomatal conductance (SC)	0.31	0.56	0.38	0.21-0.69	0.23	0.002	0.02	10.33	37.6	0.07	5.85
Relative water content (RWC)	76	89.86	82.49	69.22-94.42	8.28	19.03	45.52	5.29	8.18	0.42	7.04
Harvest index (HI)	13.99	32.49	24.59	5.39- 48.16	9.22	50.58	83.69	28.89	37.16	0.6	46.26
Plot yield (PY)	65	148.33	117.48	23.3-221.67	43.1	1468.58	2197.05	32.55	39.81	0.67	54.82

### Trait associations

Correlation study was made to establish the extent of association between yield and other component traits in rice [21]. These studies help the plant breeder to understand the relationship among the component traits of yield. Correlating genetic information with physiological traits related to drought tolerance will allow the development of rice cultivars tolerance to drought through indirect selection.

Genotypic correlation for physiological traits associated with drought tolerance was studied under severe water stress regime to study the relationships between the physiological traits and some other yield traits. All the physiological traits recorded significant and positive correlation with the trait plot yield (Table 2) and the same kind of result was reported earlier [22,23]. The trait photosynthetic rate exhibits positive and significant correlation with the traits transpiration rate, stomatal conductance and harvest index while it showed significant negative correlation with RWC [24]. The trait stomatal conductance and transpiration rate showed significant and negative correlation with relative water content [25]. Stomatal conductance had significant positive association with harvest index [26]. A very strong correlation was observed between grain yield and harvest index under severe stress indicating that yield differences observed under drought were mostly the result of a large difference in the capacity of the plants to maintain seed set under stress rather than to accumulate

biomass. Therefore the genetic improvement of harvest index would improve grain yield greatly [27-29].

### Mapping QTLs for physiological traits associated with drought tolerance

Molecular marker technology facilitates the identification of genomic locations linked to traits of interest and helps in indirect selection of such complex traits without the need for difficult phenotypic measurements. Marker assisted backcrossing (MABC) combines 'foreground' selection of donor alleles linked to QTLs and 'background' selection of recurrent parent alleles in the later generation. Quantitative trait loci (QTL) have been identified for several drought tolerance component traits in rice [30,31].

Single marker analysis performed with the help of QTL cartographer had provided information on the genetic architecture of complex traits which estimated that the number of QTL and magnitude of their estimated additive, dominance and epistatic effects in multiple environments [32,33]. In the present study, 167 SSR markers were selected based on their position in the target genomic region and subjected to single marker analysis (Figure 1). Among the polymorphic markers, 15 markers were identified as putatively associated to at least one of the investigated trait. Many of the markers showed linkage or pleiotropic effect on the investigated traits since these were known to control more than one trait.



**Table 2:** Genotypic correlation coefficient of physiological traits under severe stress condition.

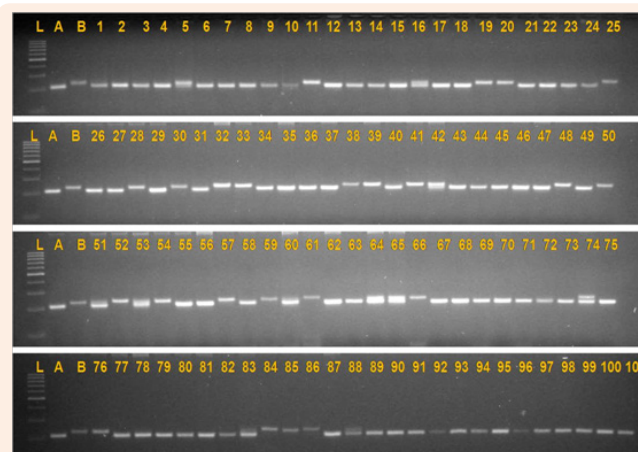
	PR	TR	SC	RWC	HI	PY
PR	1	0.579**	0.431**	-0.032**	0.137**	0.324**
TR		1	0.740**	-0.167**	0.262**	0.351**
SC			1	-0.437**	0.448**	0.501**
RWC				1	0.043**	0.163**
HI					1	0.898**
PY						1

\*, \*\* Significant at 0.05 and 0.01 probability level

The marker RM3165 on chromosome 9 was linked with the character RWC in this study (Figure 2). The same region flanked by the markers RM215- RG667 on chromosome 9 [28]. The marker RM315 on chromosome 1 was linked with the trait harvest index under stress condition [28]. He also reported two QTLs for grain yield on chromosome 1 and 4 flanked by the markers EM18\_10-L107 and RG476-RG939. The same region was also reported by this study also. The marker RM315 under stress on chromosome 1 was linked with the character grain yield (Figure 3) [34-37]. These QTL regions on chromosome 1 are associated with various physio-morphological and plant production traits under drought stress in rice [38,39].

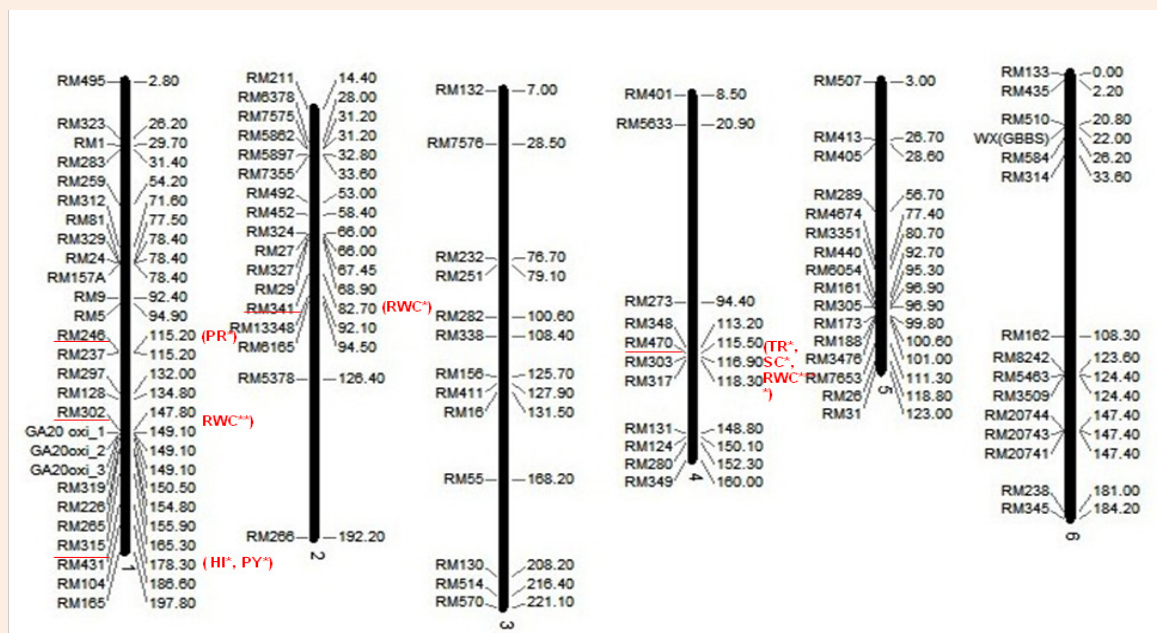
The marker RM17 on chromosome 12 was linked with the physiological trait photosynthetic rate in this study (Table 3). One QTL namely qPn12 on chromosome 12 flanked by the markers OSR20- RM277 nearer to the marker region RM17 [40]. The

marker RM470 on chromosome 4 had association with the trait transpiration rate under stress condition. Identified one QTL qTR-4 on chromosome 4 flanked by G177-CT206 nearer to the region of RM470 [41]. Characterization of QTLs for drought tolerance in this study provides insight into an understanding of the mode of drought tolerance in rice. The most practical application of the identified QTL for drought resistant components is to perform MAS (Marker aided selection) aimed at the efficient pyramiding of favorable QTL alleles to improve drought tolerance in rice.



**Figure 1:** BILs segregating for marker allele amplified with the SSR primer pair RM515.

(L – 100 base pair ladder, A- TKM9 and B-Norungan respectively, 1 to 101- Backcross Inbred Lines)



**Figure 2:** Marker loci associated with drought tolerance physiological traits.

Table 3: Marker trait association evolved through QTL cartographer.

Trait		Marker	Chromosome	Position	LOD score	Pr(F)
Photosynthetic rate	(S)	RM246	1	115.2	5.329	0.023*
		RM17	12	109.1	7.706	0.006**
Transpiration rate	(S)	RM470	4	115.5	4.999	0.027*
		RM515	8	80.5	4.356	0.039*
		RM264	8	128.6	5.203	0.024*
		RM20a	11	3.2	4.373	0.039*
		RM17	12	109.1	4.571	0.035*
Stomatal conductance	(S)	RM470	4	115.5	5.119	0.025*
		RM152	8	9.4	5.094	0.026*
		RM17	12	109.1	4.075	0.046*
RWC	(S)	RM302	1	147.8	10.479	0.001**
		RM341	2	82.7	5.447	0.021*
		RM470	4	115.5	18.178	0.000****
		RM152	8	9.4	10.903	0.001**
		RM44	8	60.9	6.674	0.011*
		RM331	8	60.9	8.041	0.005**
		RM105	9	32.1	11.633	0.001***
		RM3165	9	65.1	5.717	0.018*
		RM20a	11	3.2	12.517	0.000***
		RM17	12	109.1	7.337	0.007**
Harvest index	(S)	RM315	1	165.3	6.352	0.013*
		RM536	11	55.1	6.392	0.013*
Plot yield	(S)	RM315	1	165.3	5.439	0.021*

S- Severe stress condition

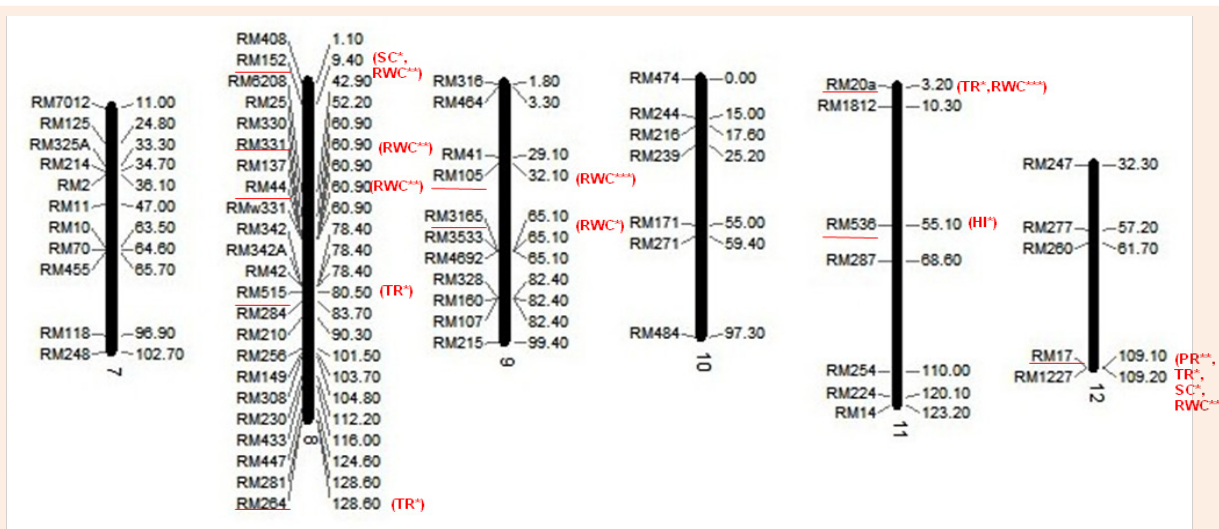


Figure 3: Marker loci associated with drought tolerance physiological traits.

## Conclusion

The study on molecular genetic analysis of drought tolerance in rice using an indigenously developed backcross Inbred population has brought out relationship among the drought tolerance physiological traits and key genomic introgressions of drought tolerance and related traits were mapped using SSR markers. The result would help in fine tuning the breeding strategies and application of SSR markers for the development of the drought resistant rice varieties through marker assisted pyramiding multiple QTLs.

## References

- Passioura JB (2007) The drought environment: physical, biological and agricultural perspectives. *J Exp Bot* 58(2): 113-117.
- Isendahl N, Schmidt G (2006) Drought in the mediterranean-WWF policy proposals. Edited by W Report Madrid, Spain.
- Hongbo S, Zongsuo L, Mingan S (2005) Changes of anti-oxidative enzymes and MDA content under soil water deficits among 10 wheat (*Triticum aestivum* L.) genotypes at maturation stage. *Colloids Surf B Biointerfaces* 45(1): 7-13.
- Tao H, Brueck H, Dittert K, Kreye C, Lin S, et al. (2006) Growth and yield formation for rice (*Oryza sativa* L.) in the water-saving ground cover rice production system (GCRPS). *Field Crops Res* 95(1): 1-12.
- Yang JC, Liu K, Zhang SF, Wang XM, Zh Q, et al. (2008) Hormones in rice spikelets in responses to water stress during meiosis. *Acta Agro Sin* 34(1): 111-118.
- Bouman BAM, Peng S, Castañeda AR, Visperas RM (2005) Yield and water use of irrigated tropical aerobic rice systems. *Agricultural Water Management* 74(2): 87-105.
- Jones H (2004) What is water use efficiency? In water use efficiency in plant biology, Edited by Bacon MA Oxford: Blackwell, UK.
- Nguyen HT, Babu RC, Blum A (1997) Breeding for drought tolerance in rice: Physiology and molecular genetics considerations. *Crop Sci* 37(5): 1426-1434.
- Dingkuhn M, Cruz RT, O'Toole JC, Doerffling K (1989) Net photosynthesis, water use efficiency, leaf water potential and leaf rolling as affected by water deficit in tropical upland rice. *Aust J Agric Res* 40: 1171-1181.
- Ekanayake IJ, Steponkus PL, De Datta SK (1990) Sensitivity of pollination to water deficits at anthesis in upland rice. *Crop Sci* 30(2): 310-315.
- Blum A, Munns R, Passioura JB, Turner NC, Sharp RE, et al. (1996) Letters to the editors: genetically engineered plants resistant to soil drying and salt stress: how to interpret osmotic relations. *Plant Physiol* 110: 1051-1053.
- Hao W, Lin HX (2010) Toward understanding genetic mechanisms of complex traits in rice. *J Genet Genomics* 37(10): 653-666.
- Vikram P, Swamy BPM, Dixit S, Ahmed H, Cruz MTS, et al. (2012) Bulk segregant analysis: "An effective approach for mapping consistent-effect drought grain yield QTLs in rice". *Field Crops Res* 134: 185-192.
- Kumar S, Dwivedi SK, Singh SS, Jha SK, Lekshmy S, et al. (2014) Identification of drought tolerant rice genotypes by analysing drought tolerance indices and morpho-physiological traits. *SABRAO J Breed Genet* 46(2): 217-230.
- Barrs HD, Weatherley PE (1962) A re-examination of the relative turgidity technique for estimating water deficits in leaves. *Aust J Biol Sci* 15: 415-428.
- Saghai Moroofof MA, Soliman K, Jorgensen RA, Allard RW (1984) Ribosomal DNA spacer-length polymorphism in barley: Mendelian inheritance, chromosomal location and population dynamics. *Proc Natl Acad Sci USA* 81(24): 8014- 8018.
- Hosington D, Khairallah M, Gonzalez-de-Leon (1994) Laboratory protocols: CIMMYT applied molecular genetics Laboratory. CIMMYT, Mexico.
- Fukai S, Cooper M (1995) Development of drought-resistant cultivars using physiomorphological traits in rice. *Field crops Res*, 40(2): 67-86.
- Bernier J, Kumar A, Ramaiah V, Spaner D, Atlin G (2007) A large-effect QTL for grain yield under reproductive stage drought stress in upland rice. *Crop Sci* 47(2): 507-518.
- Kumar R, Venuprasad R, Atlin GN (2007) Genetic analysis of rainfed lowland rice drought tolerance under naturally-occurring stress in eastern India: heritability and QTL effects. *Field Crops Res* 103(1): 42-52.
- Kennedy JF, Rangasamy P (1998) Correlation studies on rice hybrids under low temperature conditions. *Madras Agric J*, 85(2): 130-131.
- Shen YG (1980) Photosynthesis and Matter Production, China Agriculture Publishing Company, Beijing, China: 31-32.
- Chen WF, Xu, ZJ, Zhang, BL (1995) Physiological Bases of Super High Yield Breeding in Rice. Liao Ning Science and Technology Publishing Company, Shenyang, China.
- Akram HM, Ali A, Sattar A, Rehman HSU, Bibi A (2013) Impact of water deficit stress on various physiological and agronomic traits of three basmati rice (*Oryza sativa* L.) cultivars. *J Anim Plant Sci* 23(5): 1415-1423.
- Pantuwan G, Fukai S, Cooper M, Rajatasereekul S, O'Toole JC (2002b) Yield response of rice (*Oryza sativa* L.) to drought under rainfed lowlands. 3. Plant factors contributing to drought tolerance. *Field Crops Res* 73: 181-200.
- Araus JL, Slafer GA, Reynolds MP, Royo C (2002) Plant breeding and drought in C3 cereals: what should we breed for. *Ann. Bot* 89: 925-940.
- Fukai S, Pantuwan G, Jongdee B, Cooper M (1999) Screening for drought tolerance in rainfed lowland rice. *Field Crops Res* 64: 61-74.
- Babu RC, Shashidhar HE, Lilley JM, Thanh ND, Ray JD, et al. (2001) Variation in root penetration ability, osmotic adjustment and dehydration tolerance among accessions of rice to rainfed lowland and upland ecosystems. *Plant Breed* 120: 233-238.
- Mohankumar MV, Sheshshayee MS, Rajanna MP, Udayakumar M (2011) Correlation and path analysis of drought tolerance traits on grain yield in rice germplasm accessions. *ARPN J Ag Bio Sci* 6(7): 1990-6145.
- Zhang J, Zheng HG, Aari A, Pantuwan G, Nguyen TT, et al. (2001) Locating genomic regions associated with components of drought tolerance in rice: comparative mapping within and across species. *Theor Appl Genet* 103: 19-29.

31. Li Z, Mu P, Li C, Zhang H, Li Z, et al. (2005) QTL mapping of root traits in a doubled haploid population from a cross between upland and lowland japonica rice in three environments. *Theor Appl Genet* 110(7): 1244-1252.
32. Mackey TF (2001) The genetic architecture of quantitative traits. *Annu Rev Genet* 35: 303-339.
33. Holland JB (2007) Genetic architecture of complex traits in plants. *Current Opinion in Plant Biol* 10(2): 156-161.
34. Jearakongman S (2005) Validation and discovery of quantitative trait loci for drought tolerance in backcross introgression lines in Rice (*Oryza sativa* L.) Cultivar IR64. Ph D Thesis Kasetsart University: p. 95.
35. Xu JL, Lafitte HR, Gao YM, Fu BY, Torres R, et al. (2005) QTLs for drought escape and tolerance identified in a set of random introgression lines of rice. *Theor Appl Genet* 111(8): 1642-1650.
36. Beena (2005) Studies on physio-morphological traits and genetic markers associated with drought response in rice (*O. sativa*). Ph D Thesis. Tamil Nadu Agricultural University, Coimbatore, India.
37. Prince SJ, Beena R, Gomez SM, Senthive S, Babu RC (2015) Mapping consistent rice (*Oryza sativa* L.) yield QTLs under drought stress in target rainfed environments. *Rice* 8(1): 53.
38. Gomez MS, Boopathi NM, Kuma SS, Ramasubramanian T, Chengsong Z, et al. (2010) Molecular mapping and location of QTLs for drought-resistance traits in indica rice (*Oryza sativa* L.) lines adapted to target environments. *Acta Physiol Plant* 32(2): 355-364.
39. Salunkhe A, Poornima R, Prince KSJ, Kanagaraj P, Sheeba JA, et al. (2011) Fine mapping QTL for drought resistance traits in rice (*Oryza sativa* L.) using bulk segregant analysis. *Mol Biotechnol* 49(1): 90-95.
40. Zhao XQ, Xu JL, Zhao M, Lafitte R, Zhu LH, et al. (2008) QTLs affecting morph-physiological traits related to drought tolerance detected in overlapping introgression lines of rice (*Oryza sativa* L.). *Plant Sci* 174(4): 618-625.
41. Teng S, Qian Q, Zeng D, Kunihiro Y, Fujimoto K, et al. (2004) QTL analysis of leaf photosynthetic rate and related physiological traits in rice (*Oryza sativa* L.) *Euphytica* 135(1): 1-7.